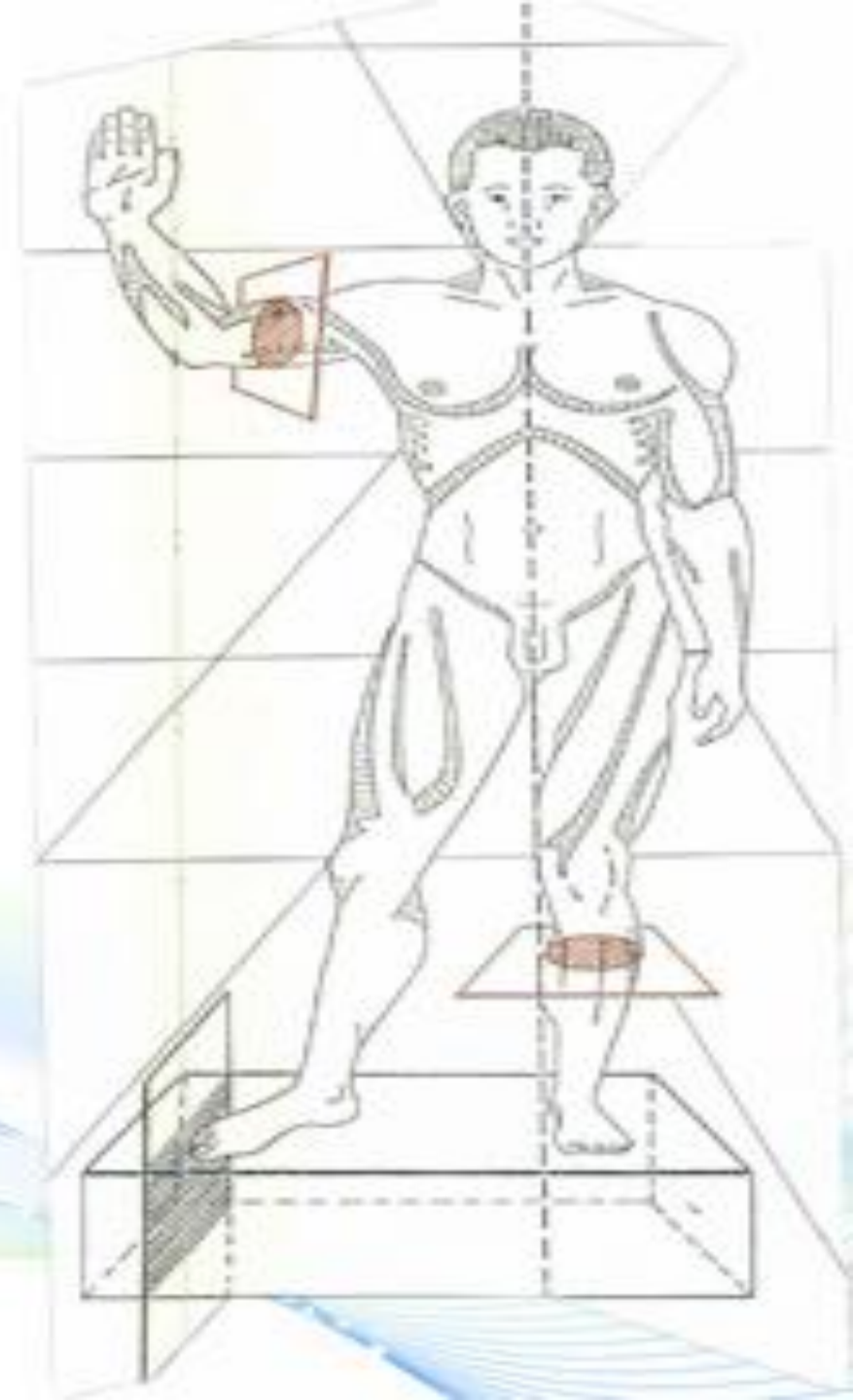


INTRODUCTION TO MALE REPRODUCTIVE SYSTEM



CONTENTS:

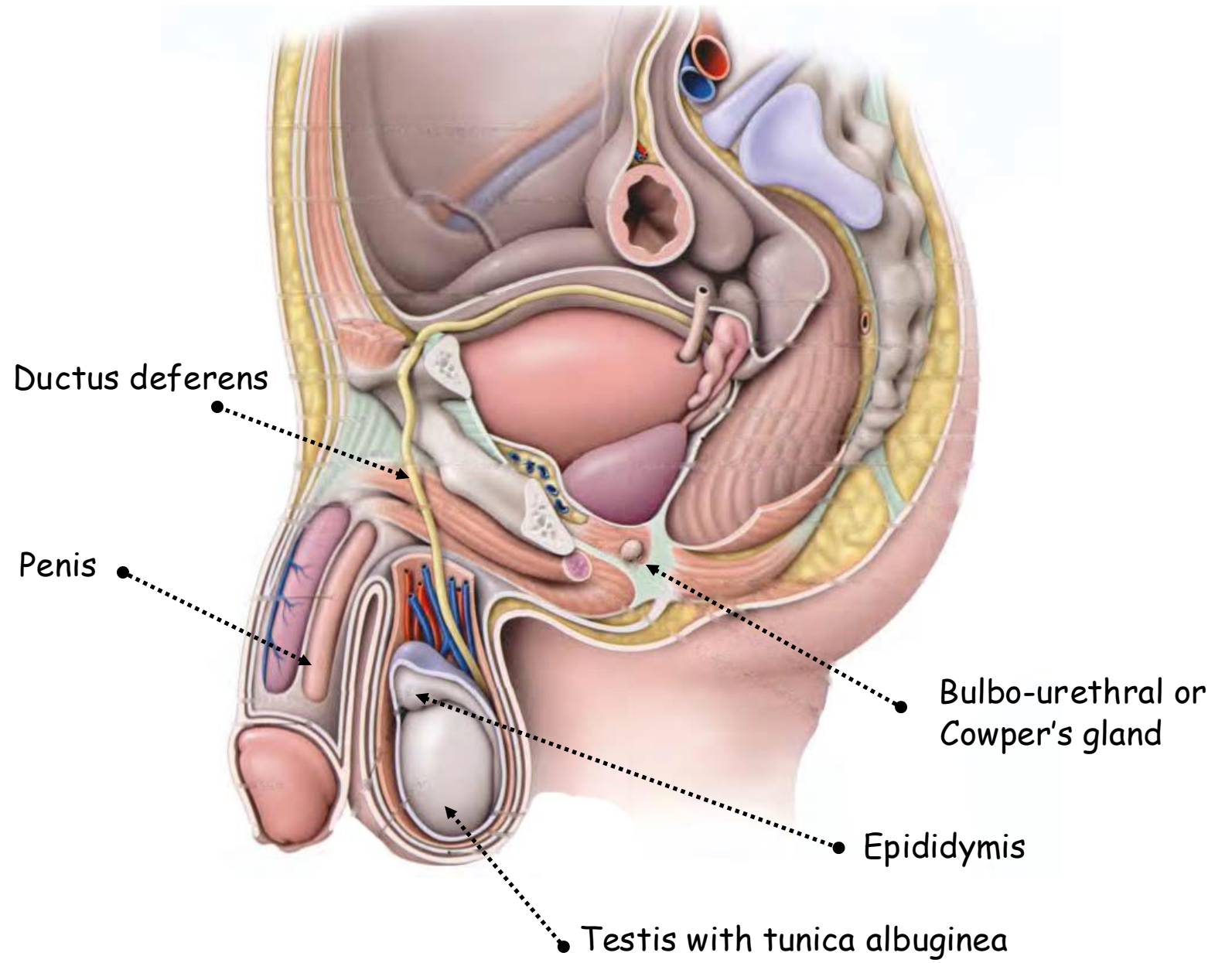
**I. DEFINITION AND
FUNCTION**

II. COMPONENTS



I. DEFINITION AND FUNCTION

- The design of the reproductive system in men is basically a series of **ducts** and **tubules**
- It has three main functions :
 - genesis**
 - storage**
 - transport** of hereditary material contained in the spermatozoa



SAGITTAL SECTION OF THE PELVIC CAVITY SHOWING THE MALE GENITAL ORGANS (FROM KAMINA)

II. COMPONENTS

- **Reproductive organs:**

Testes

- **Storage and transport ducts and tubules:**

Epididymis, ductus deferens and ejaculatory duct

- **Copulation organ:**

Penis

- **Accessory glands:**

Prostate, seminal vesicle and bulbo-urethral gland





كلية الطب
والصيدلة - مراكش
FACULTÉ DE MÉDECINE
ET DE PHARMACIE - MARRAKECH

