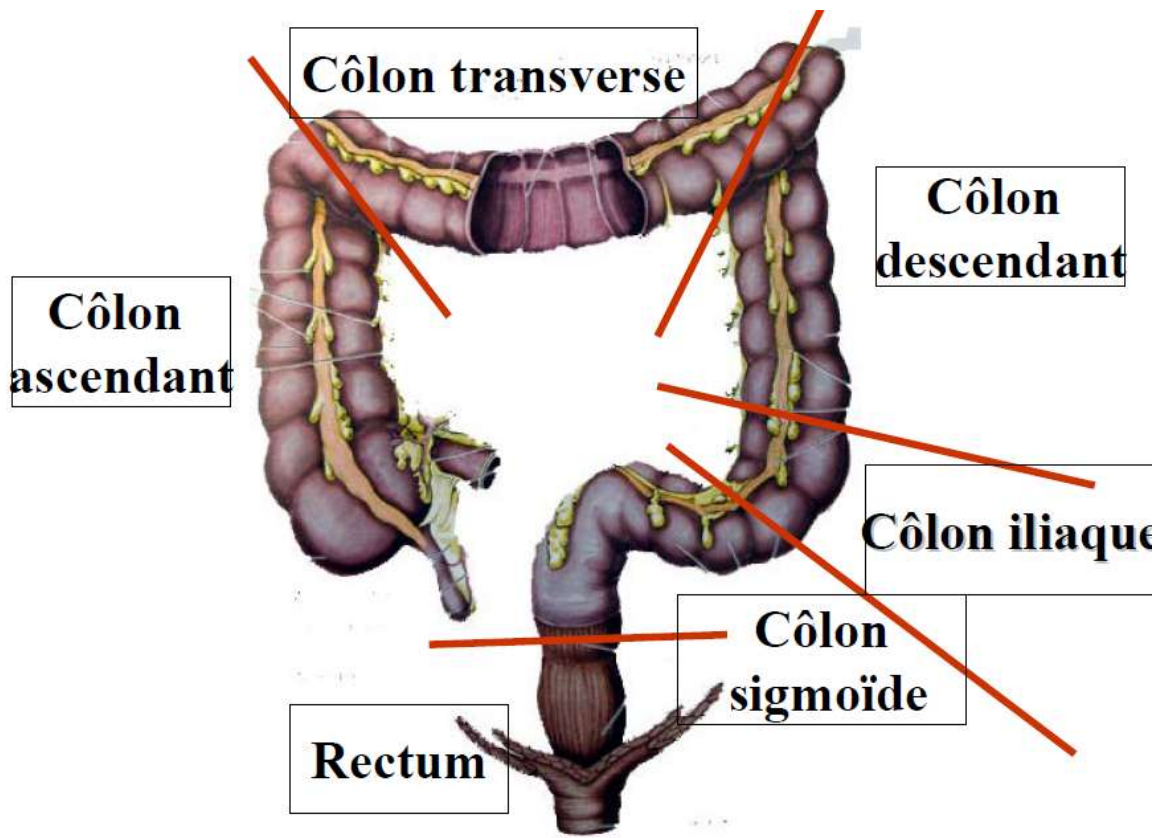
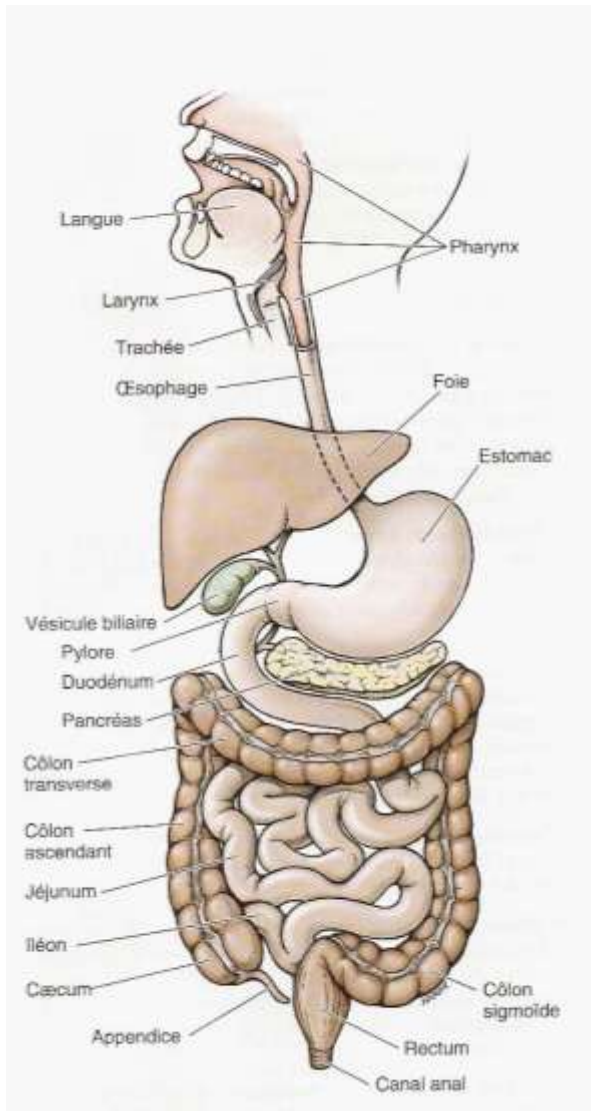
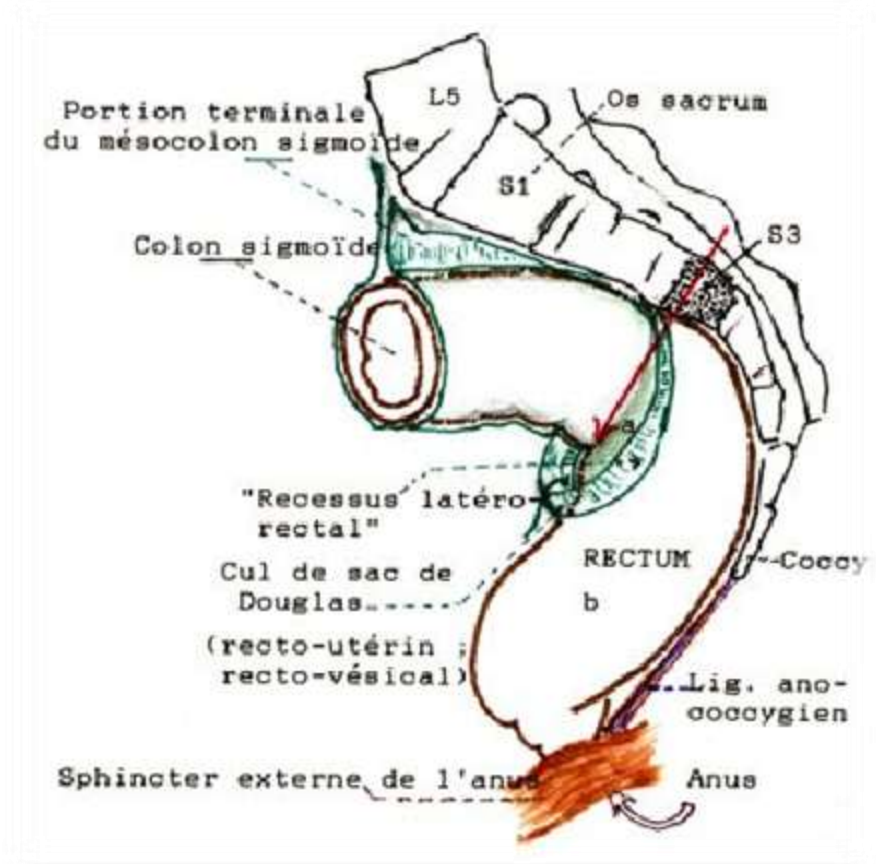
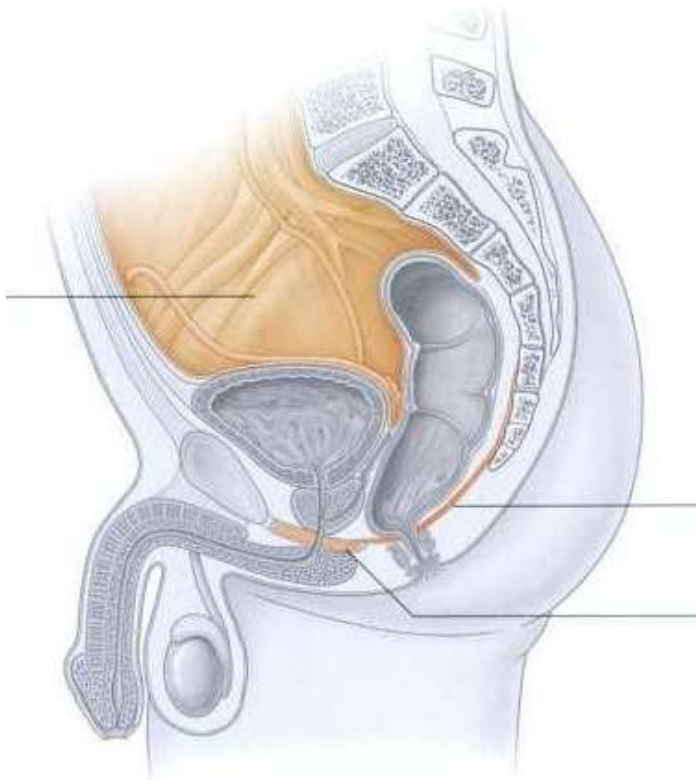


Anatomie du rectum

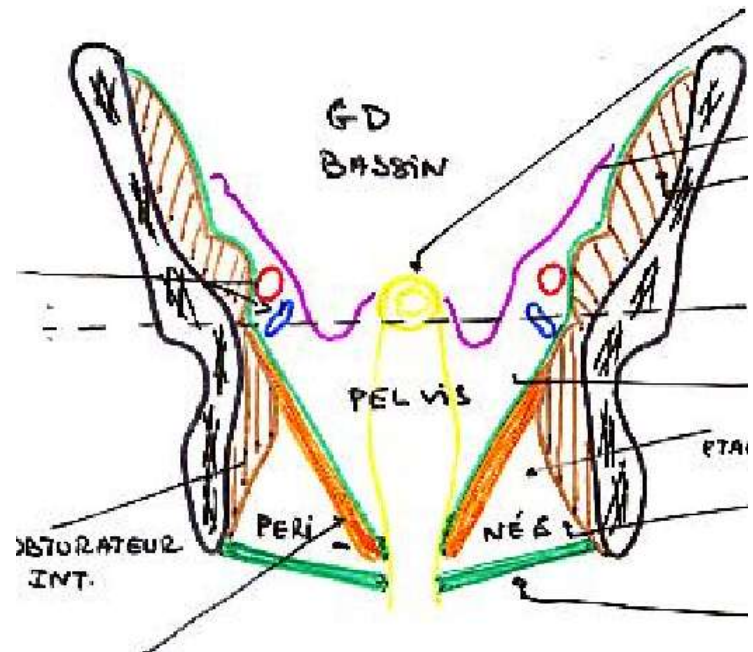
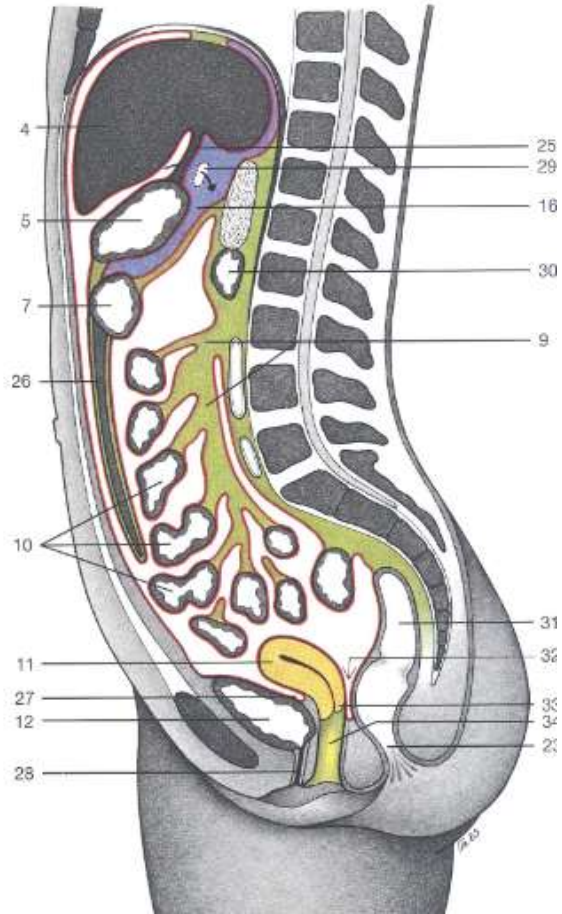
Définition



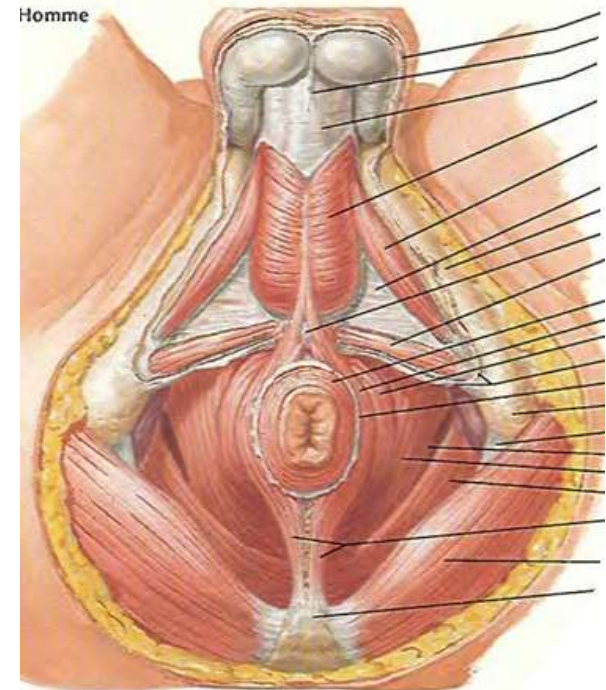
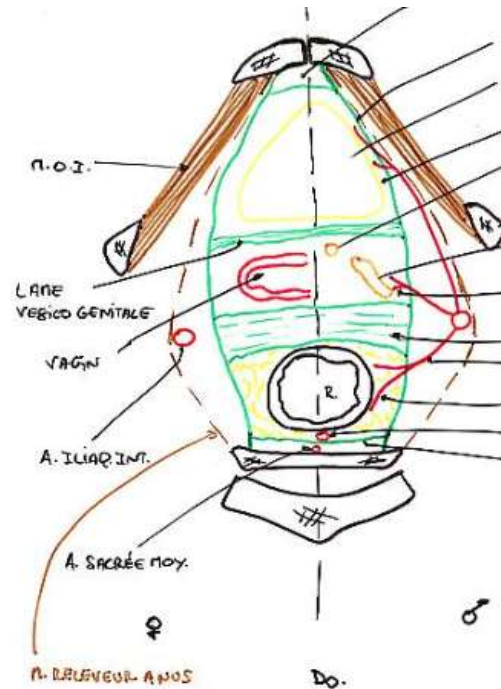
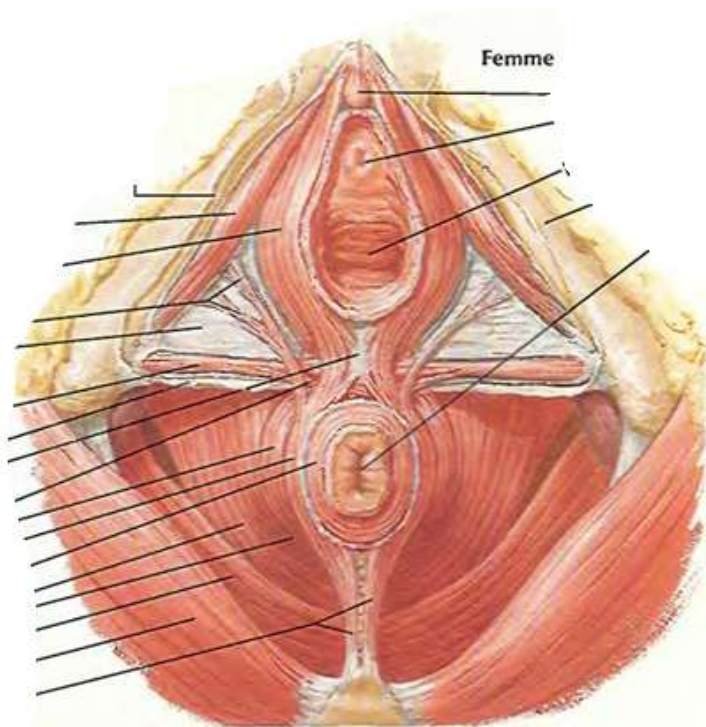
Situation



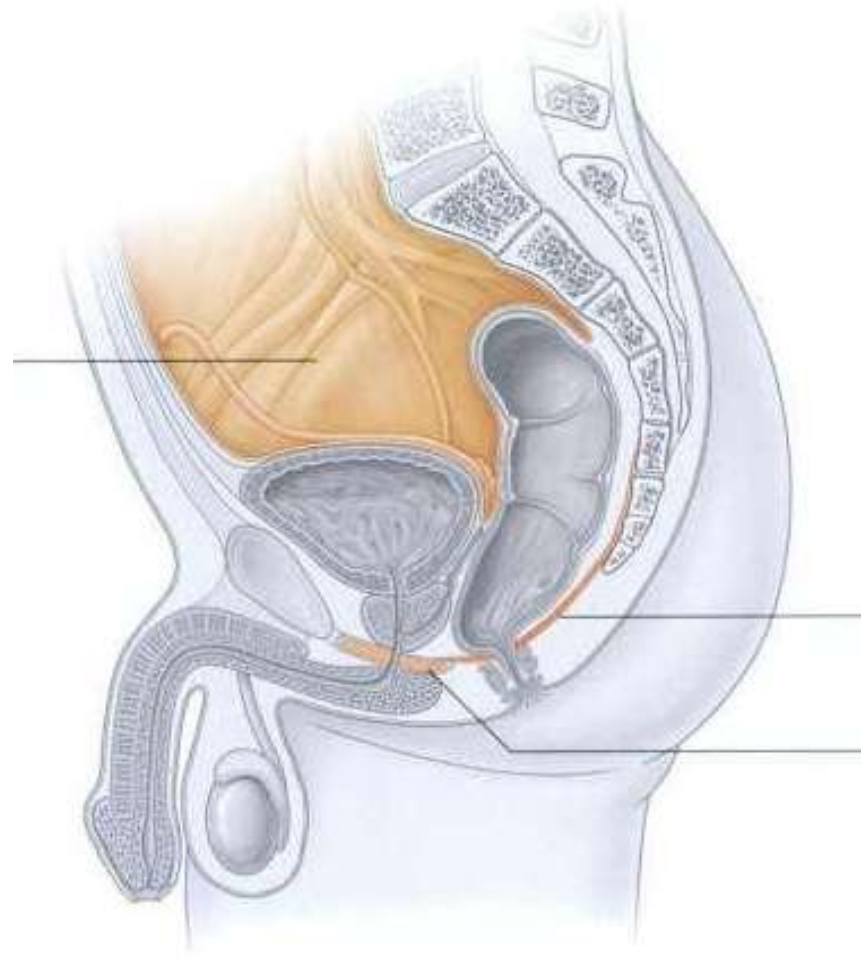
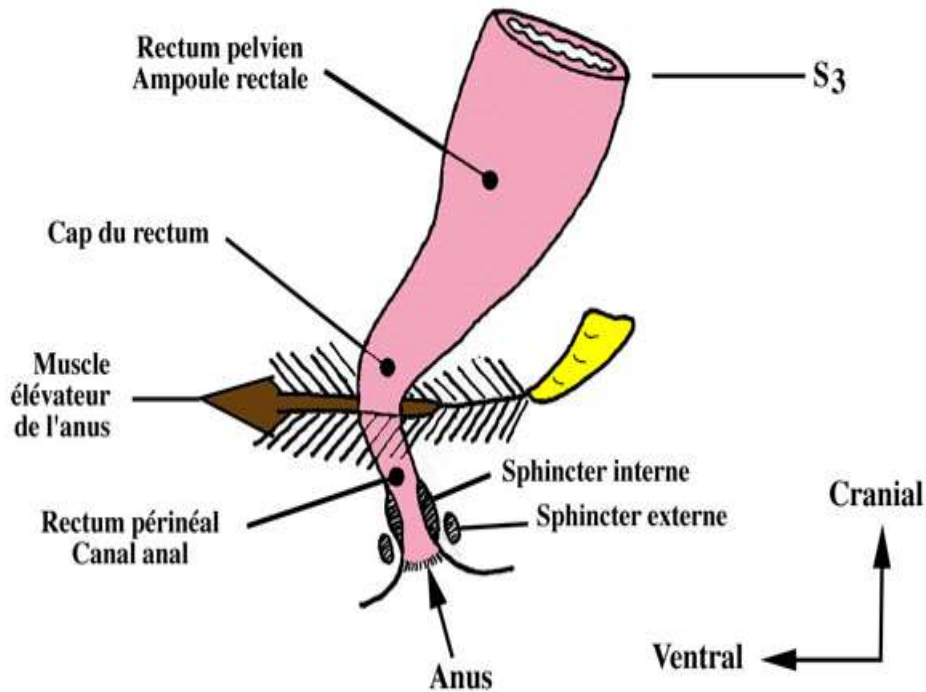
Situation



Situation

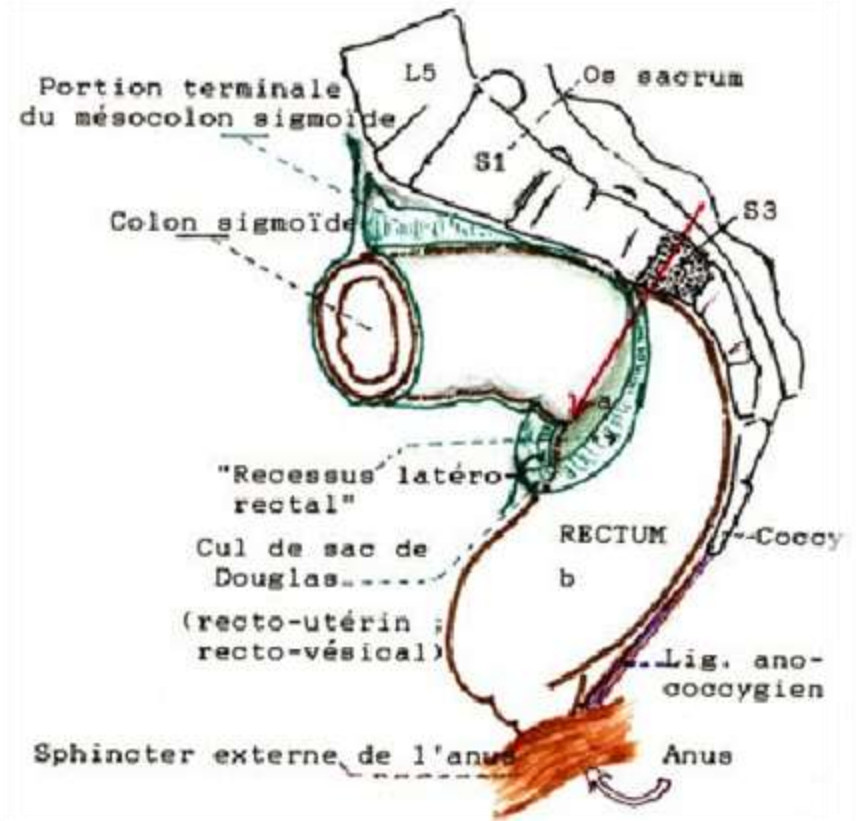
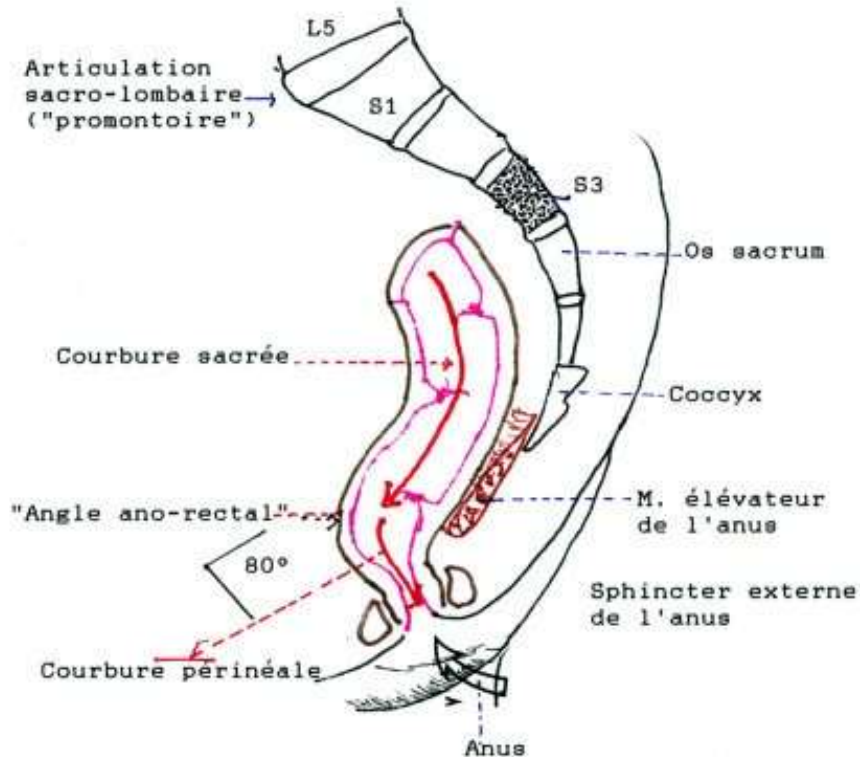


Configuration externe

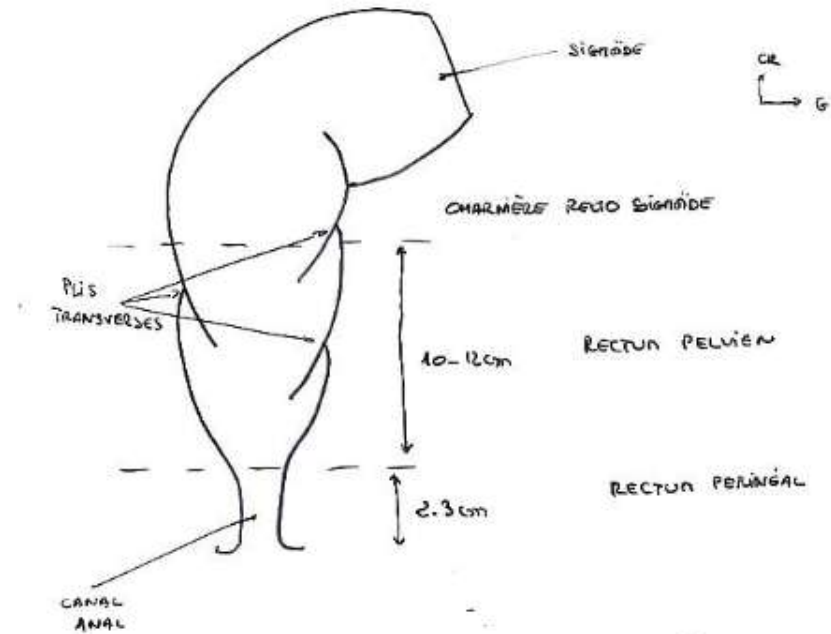
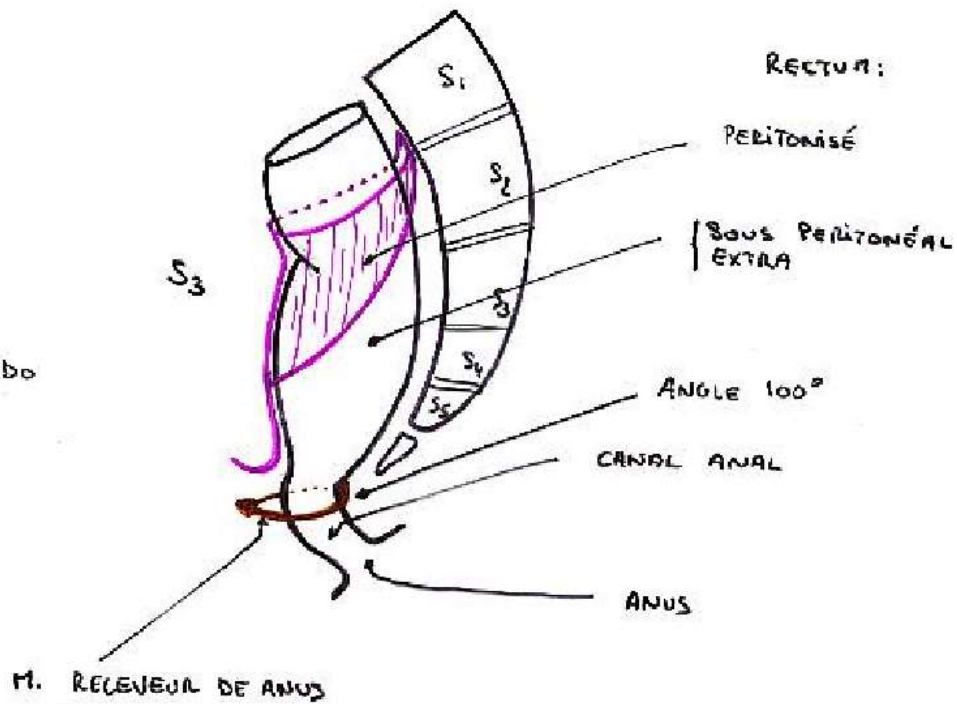


Configuration externe

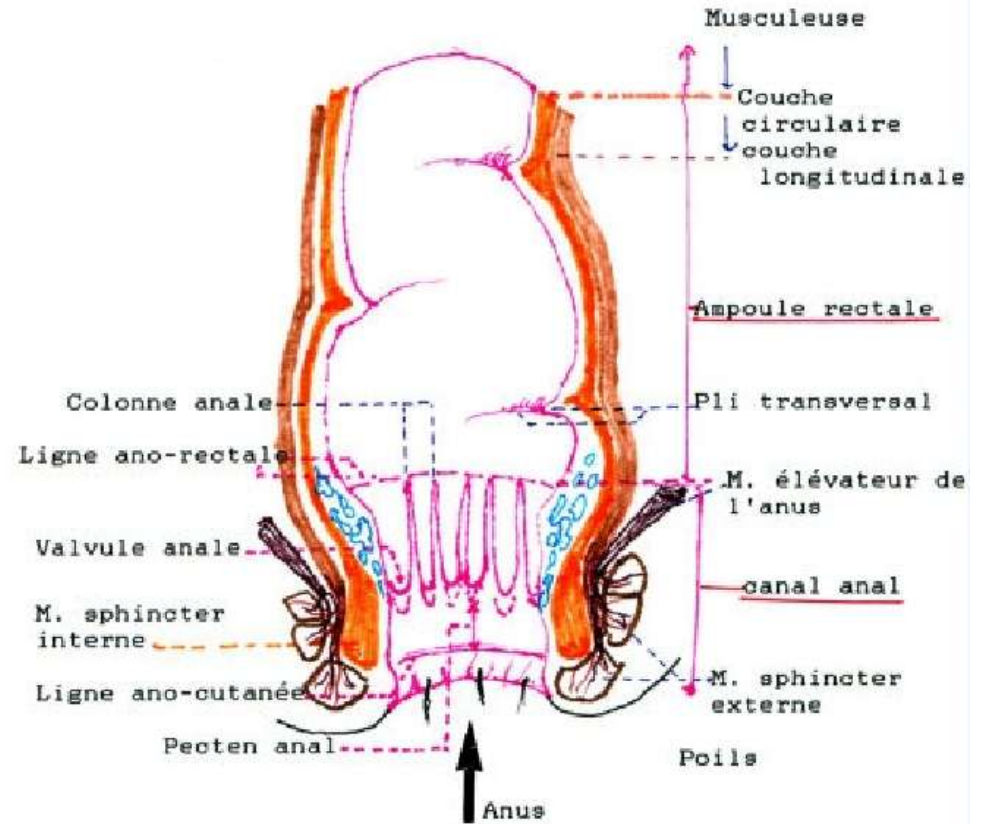
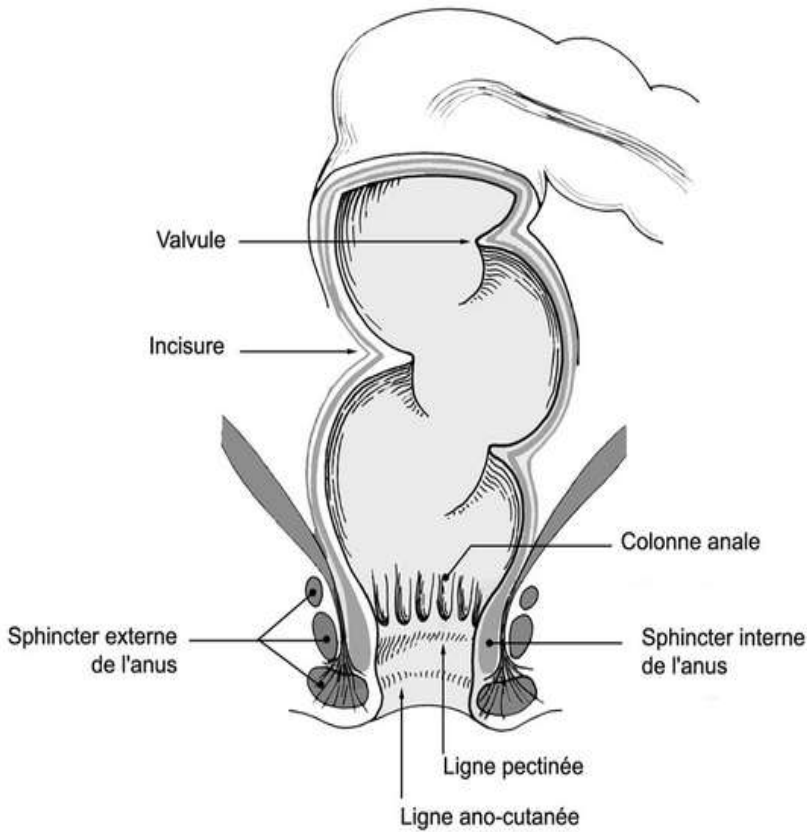
COUPE SAGITTALE DU RECTUM
SES 2 COURBURES



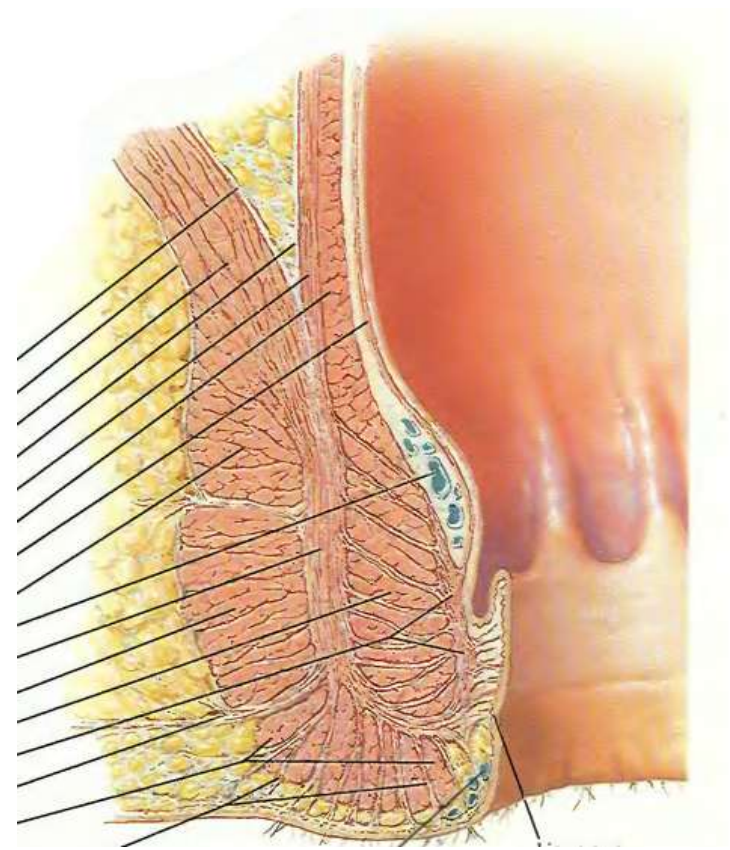
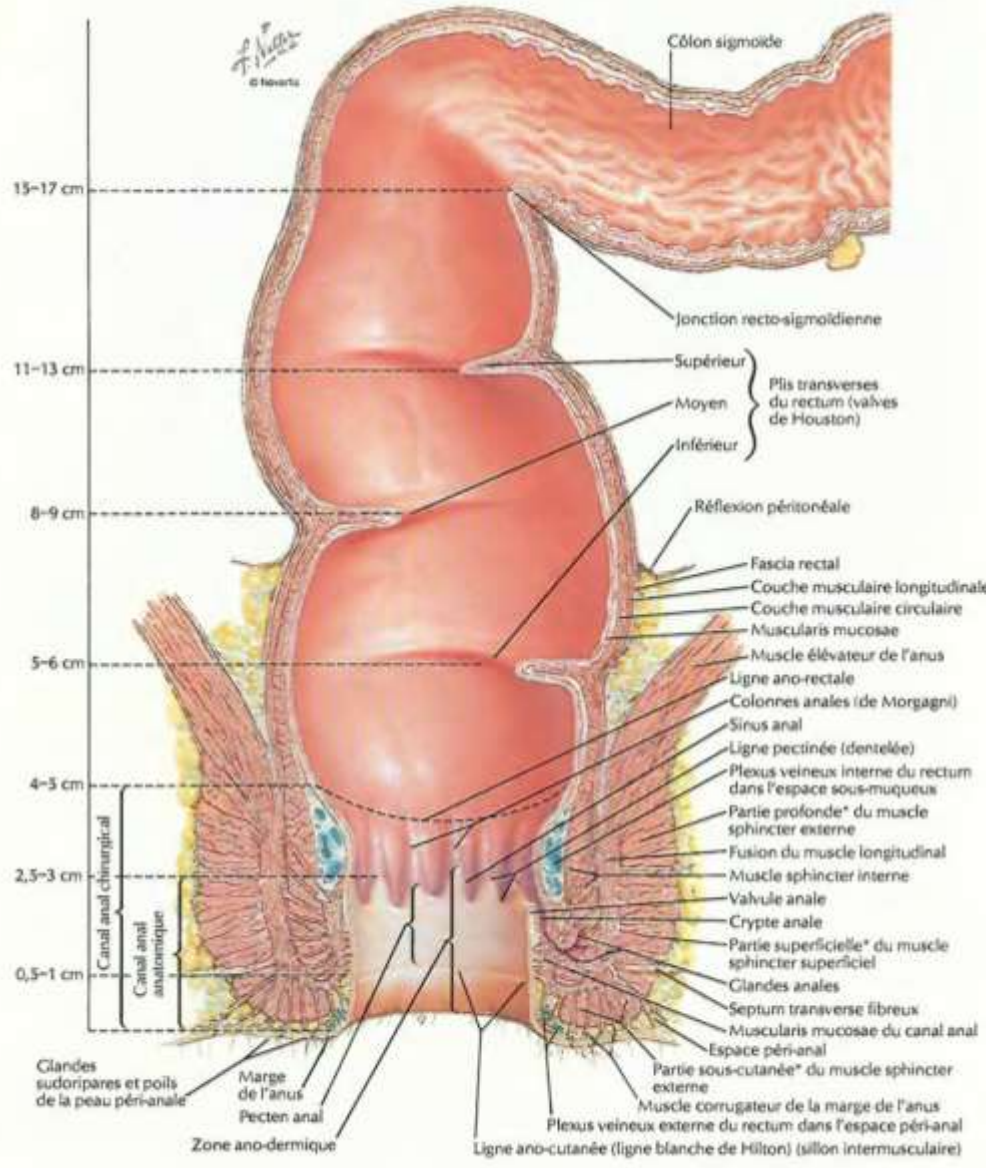
Configuration externe



Configuration interne

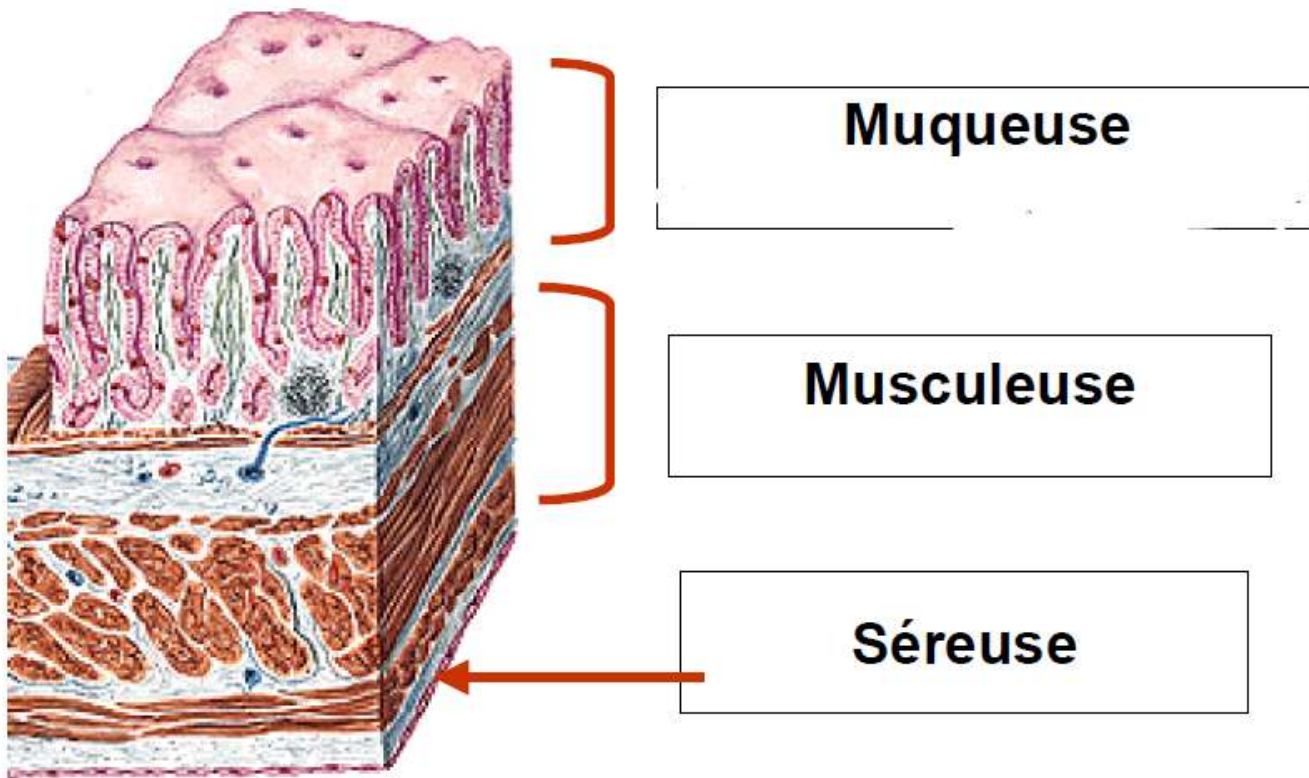


Configuration interne

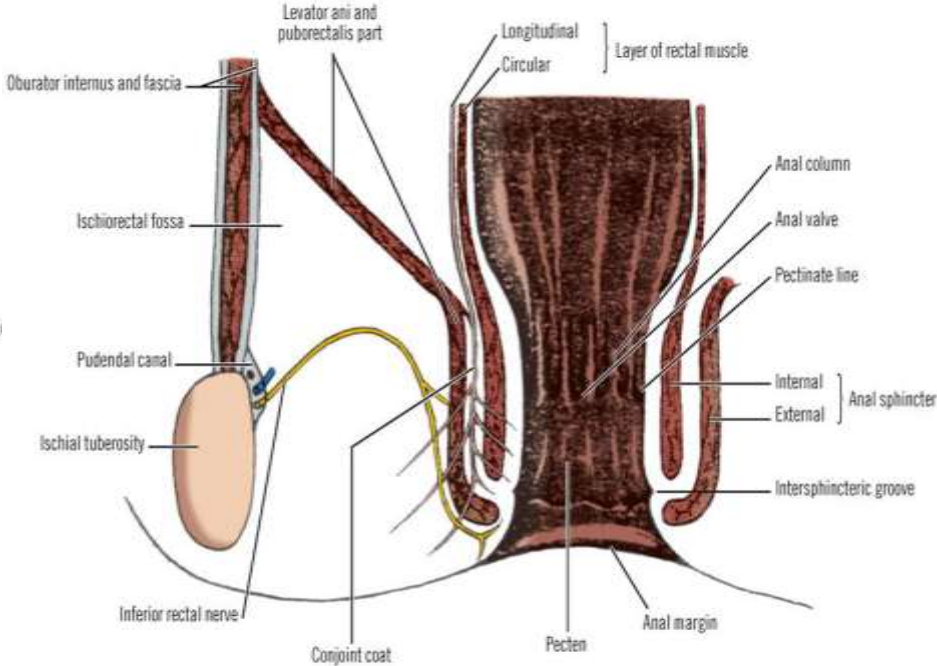
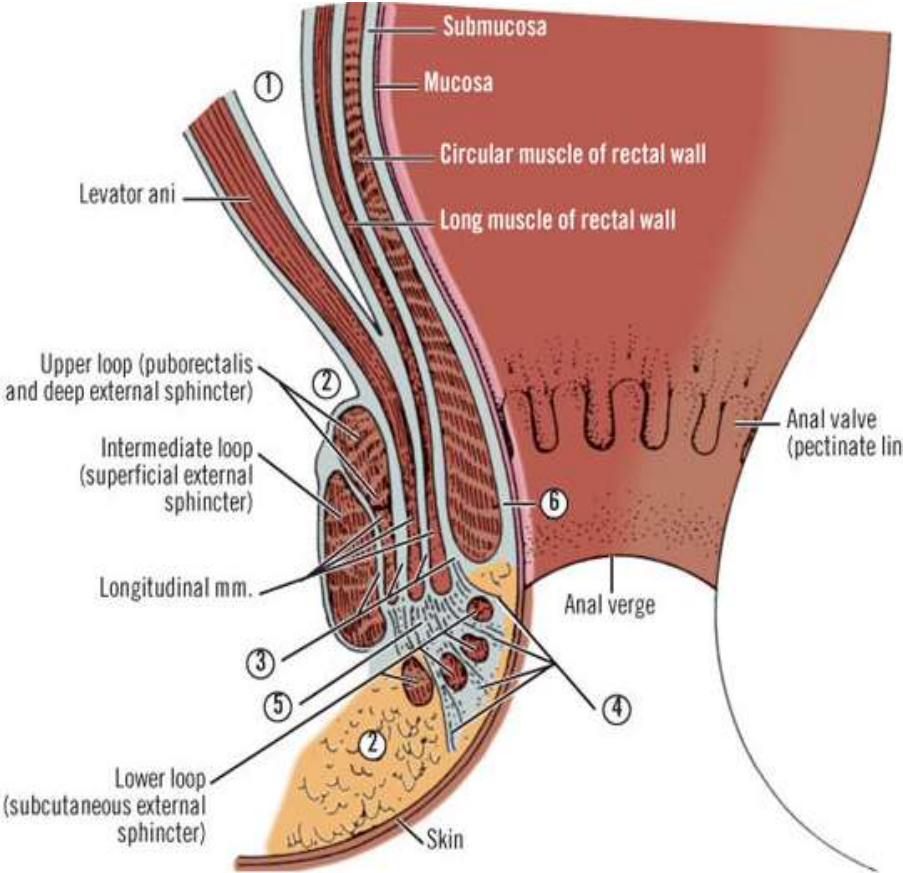


* Parties variables et souvent indistinctes

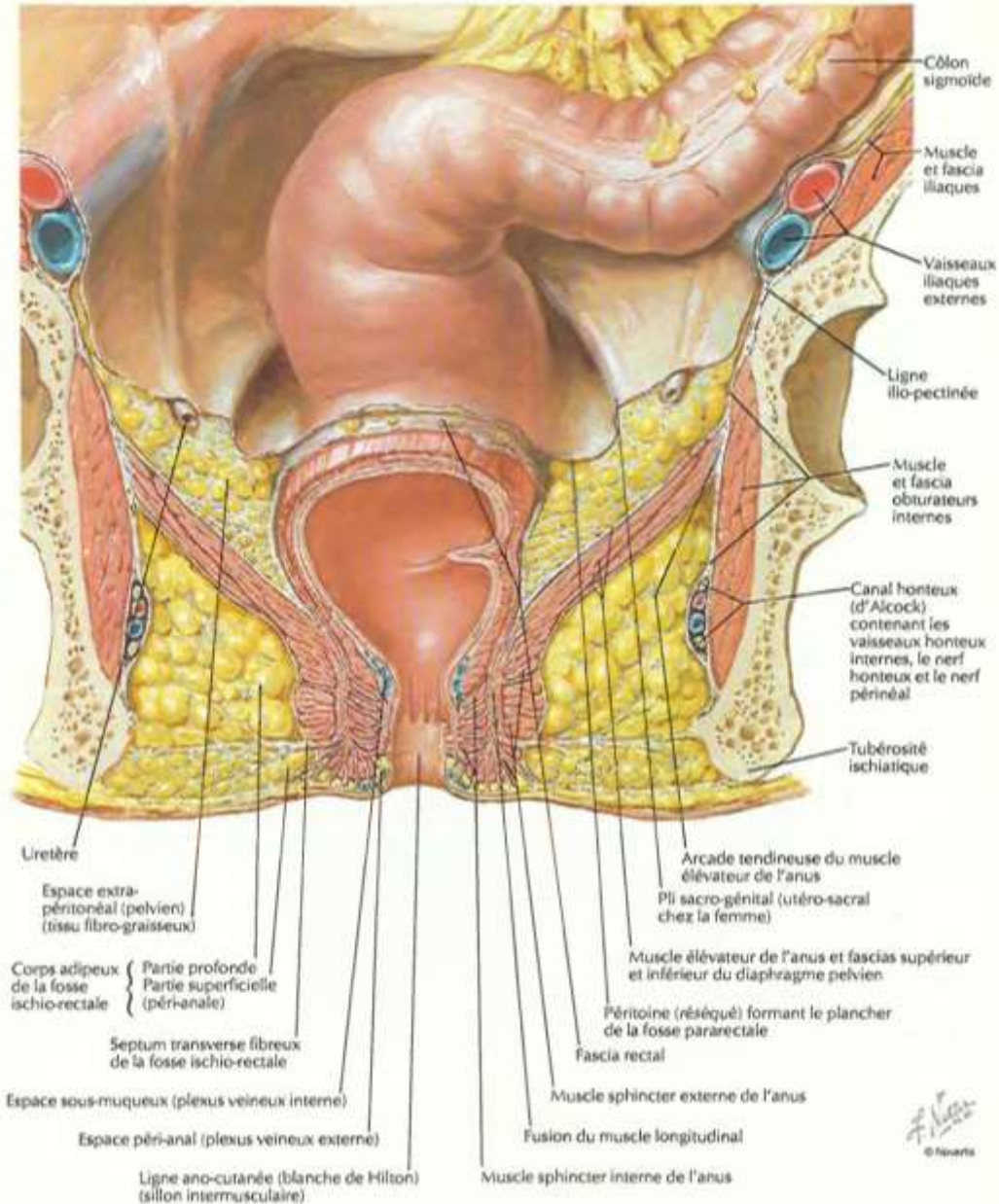
Structure



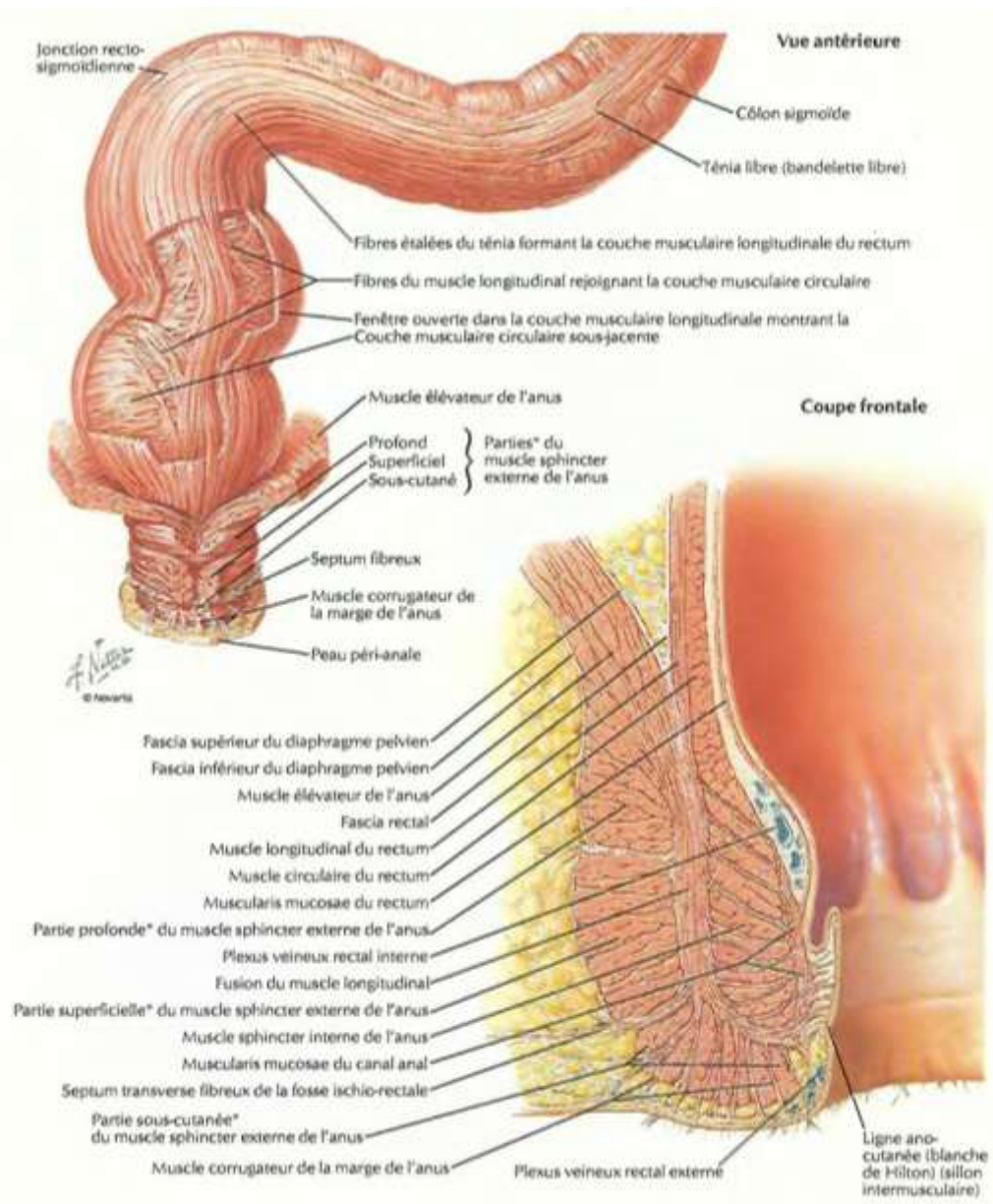
Structure



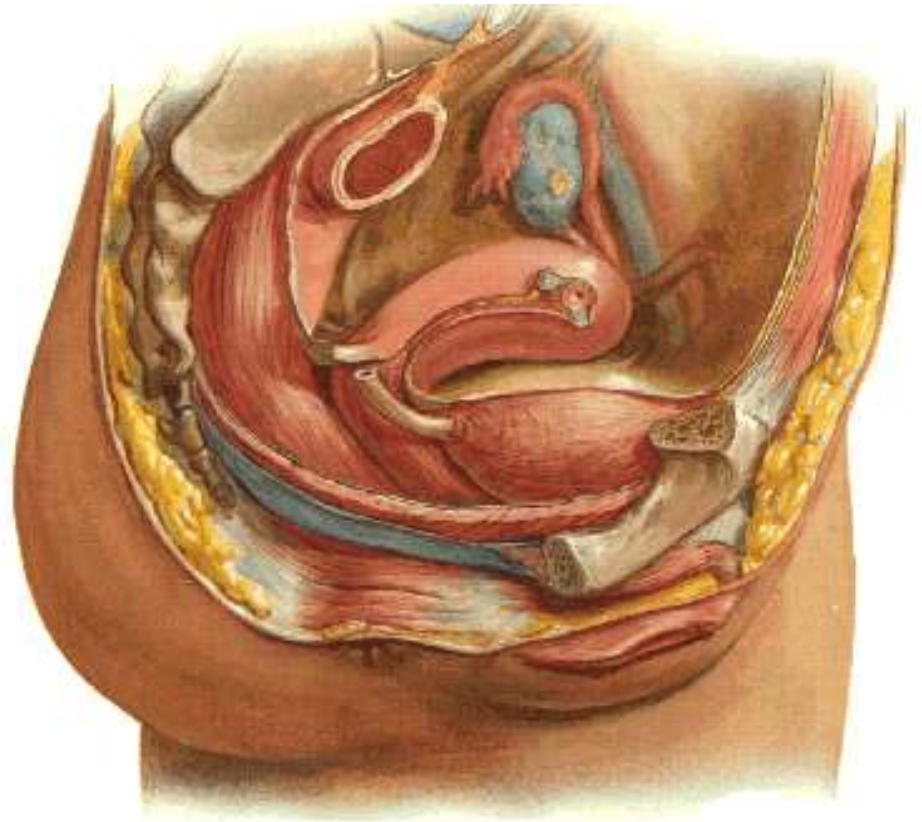
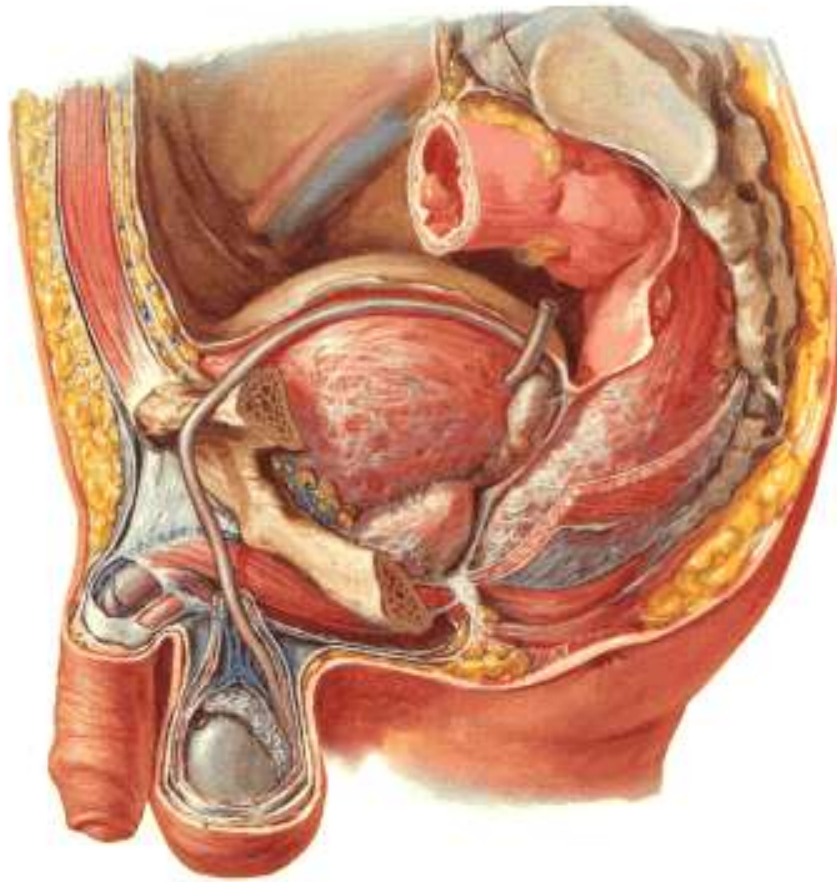
Structure



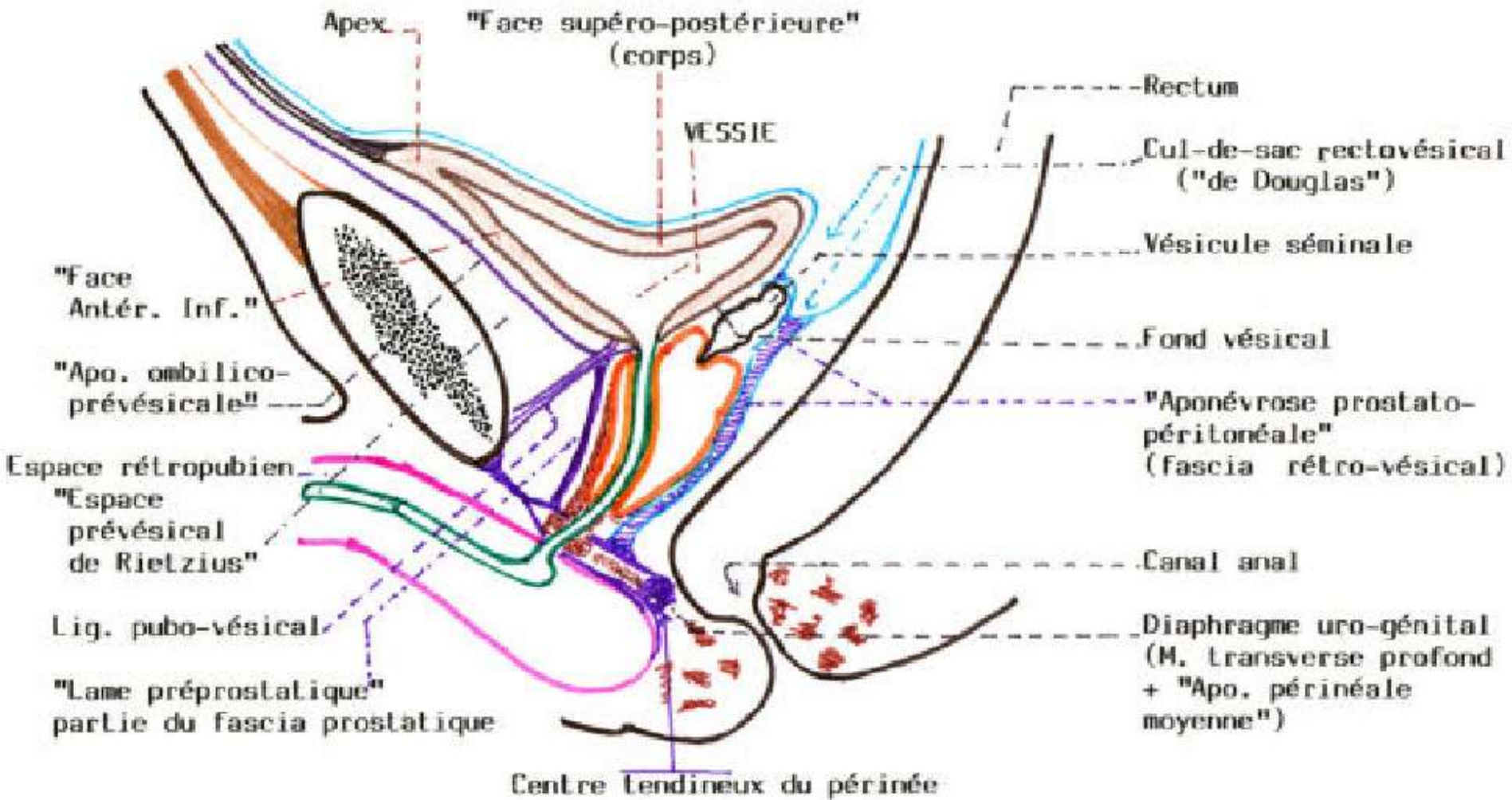
Structure



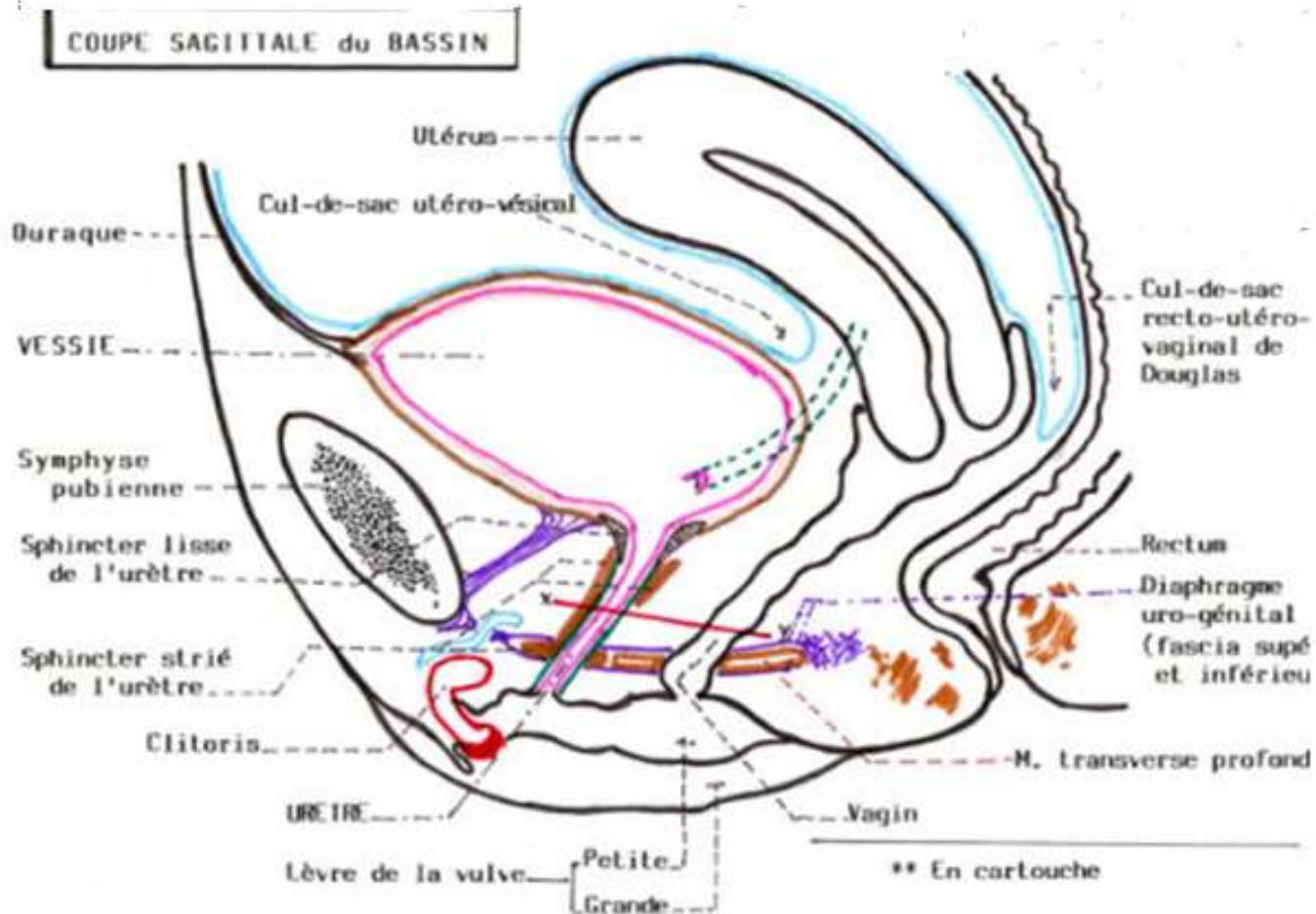
Fixité et rapports péritonéaux



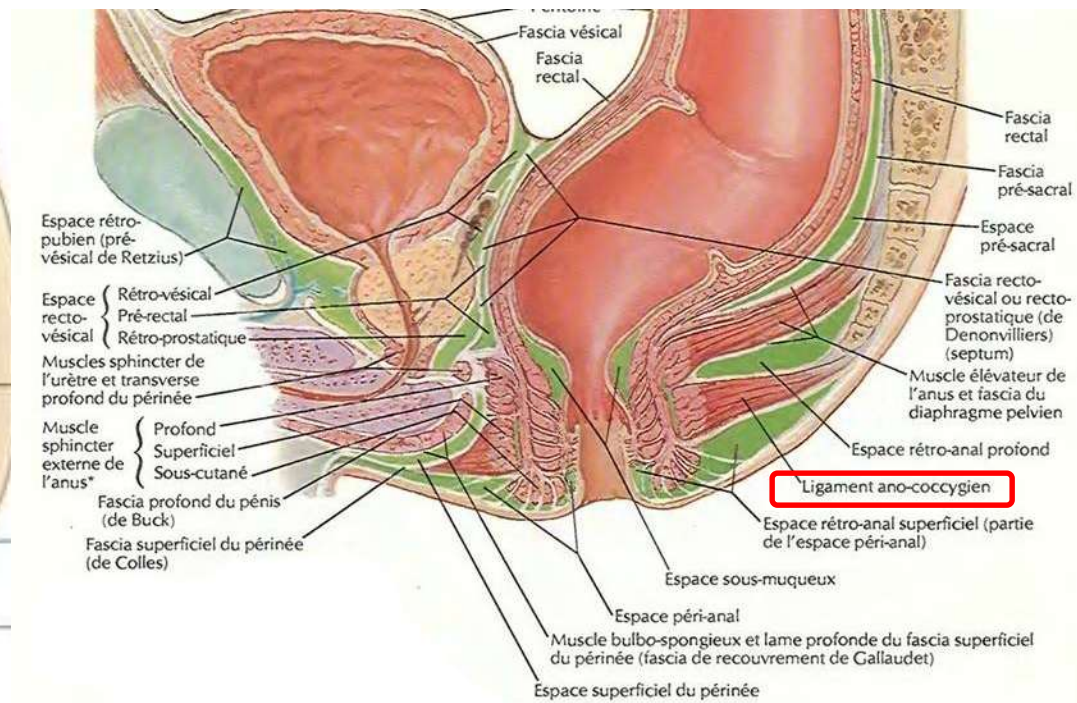
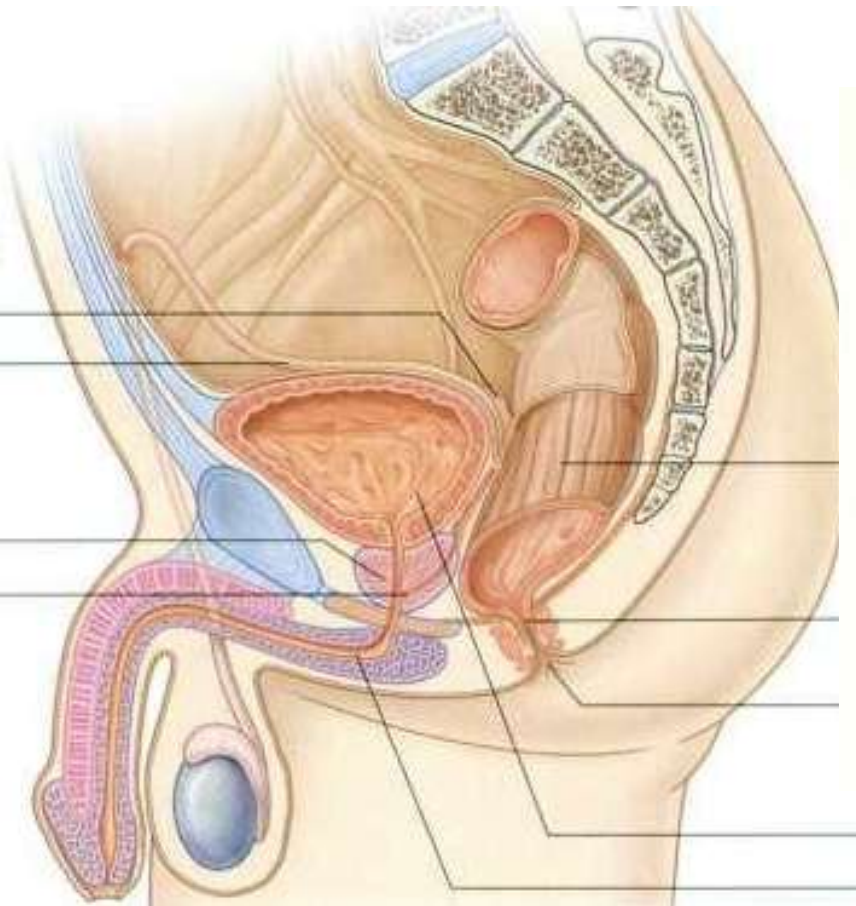
Fixité et rapports péritonéaux



Fixité et rapports péritonéaux

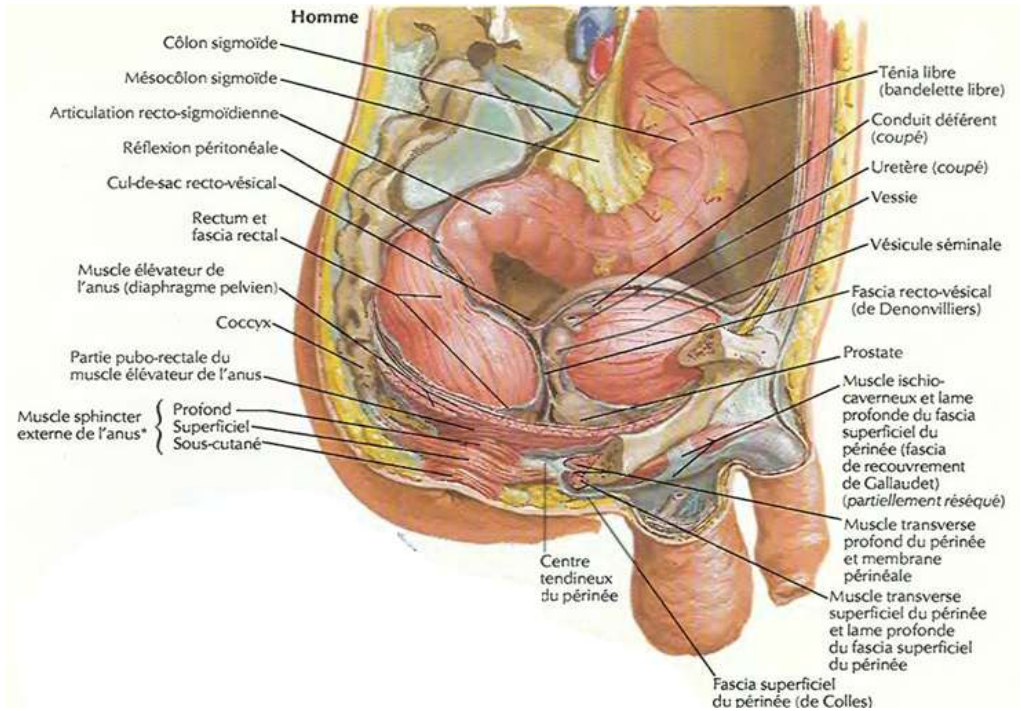
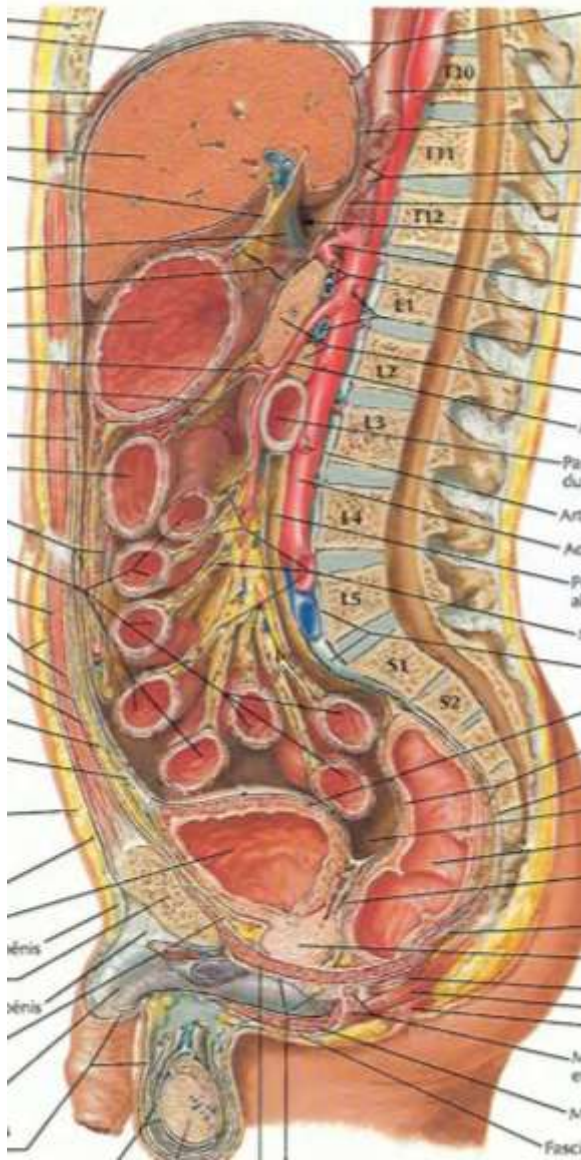


Fixité et rapports péritonéaux



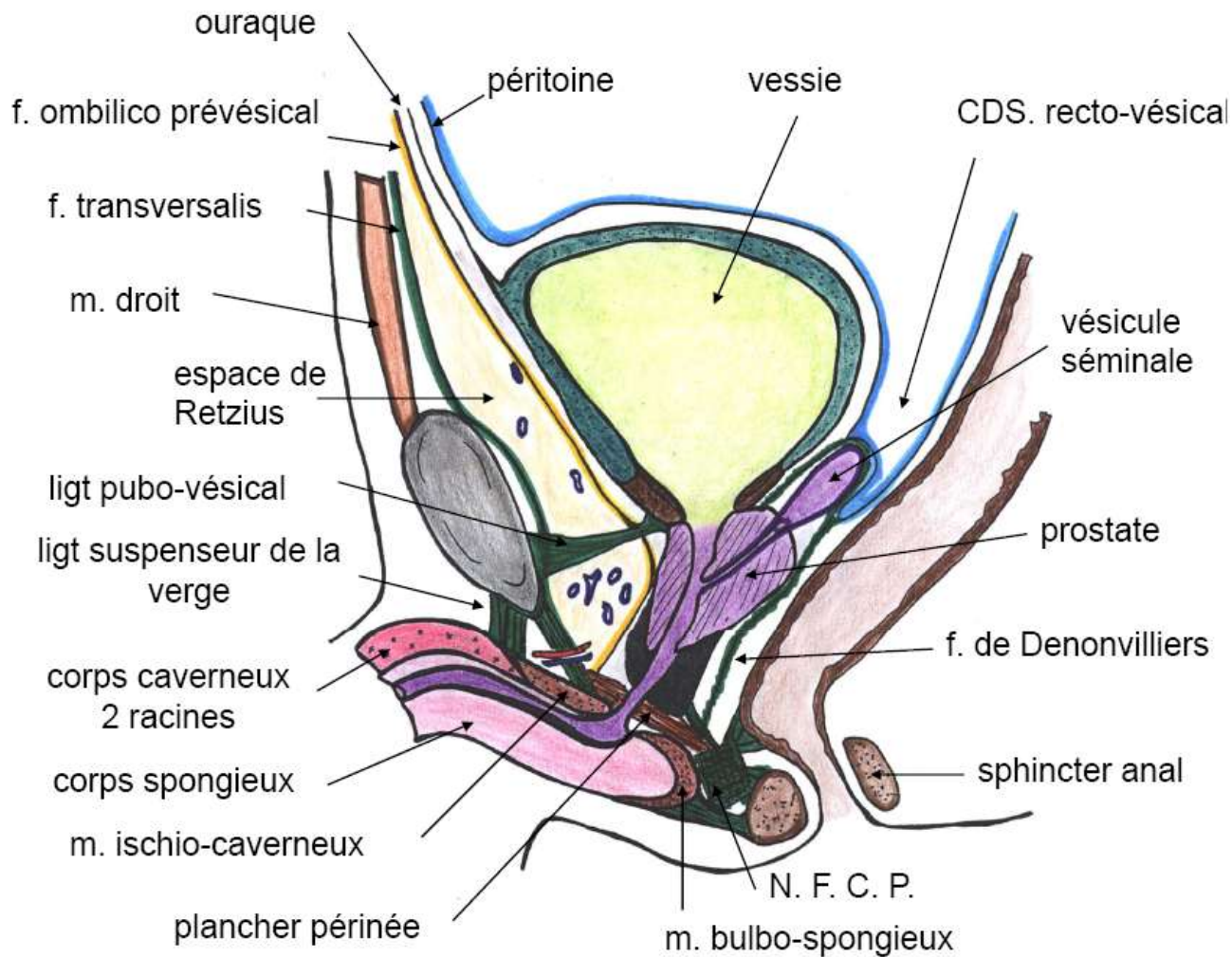
Rapports

- Rapports postérieurs et antérieurs chez l'homme



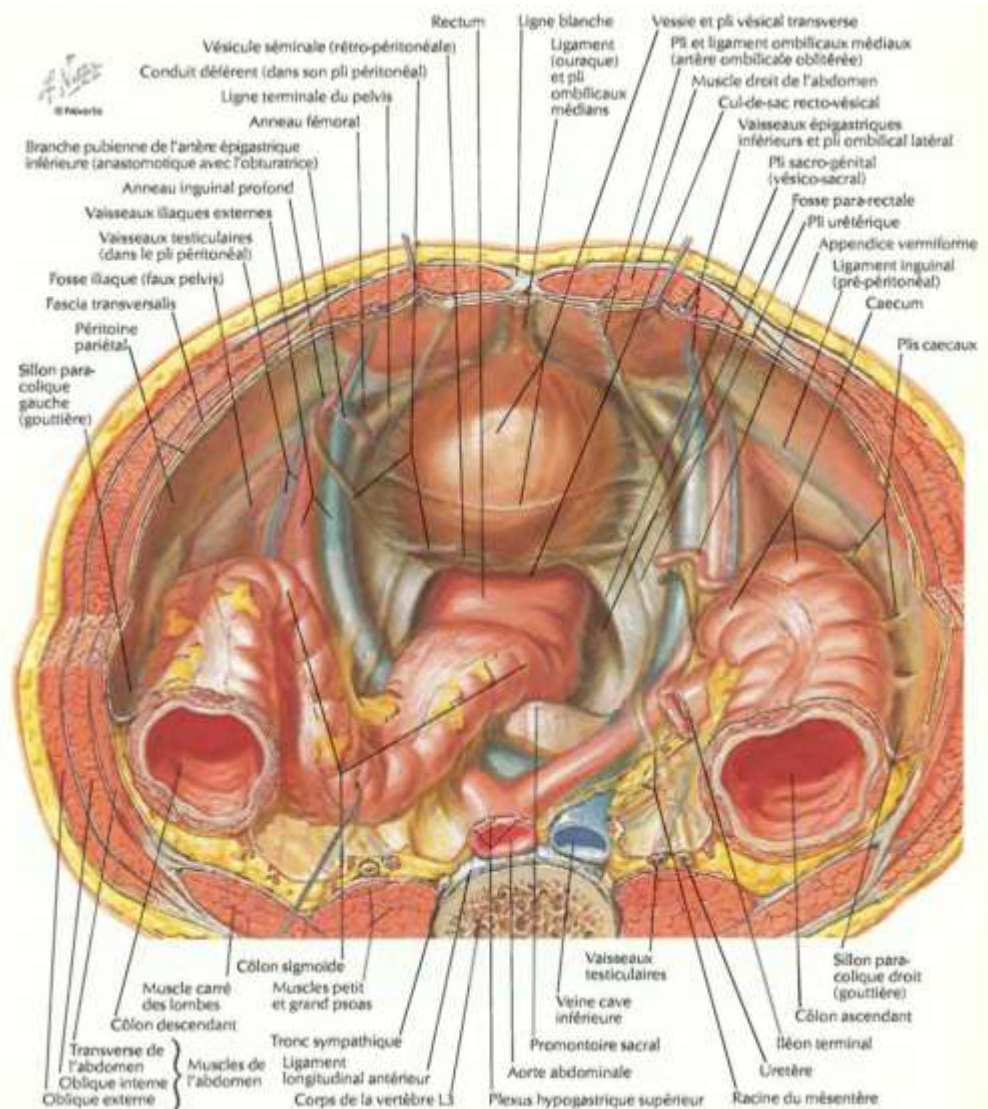
Rapports

- Rapports postérieurs et antérieurs chez l'homme



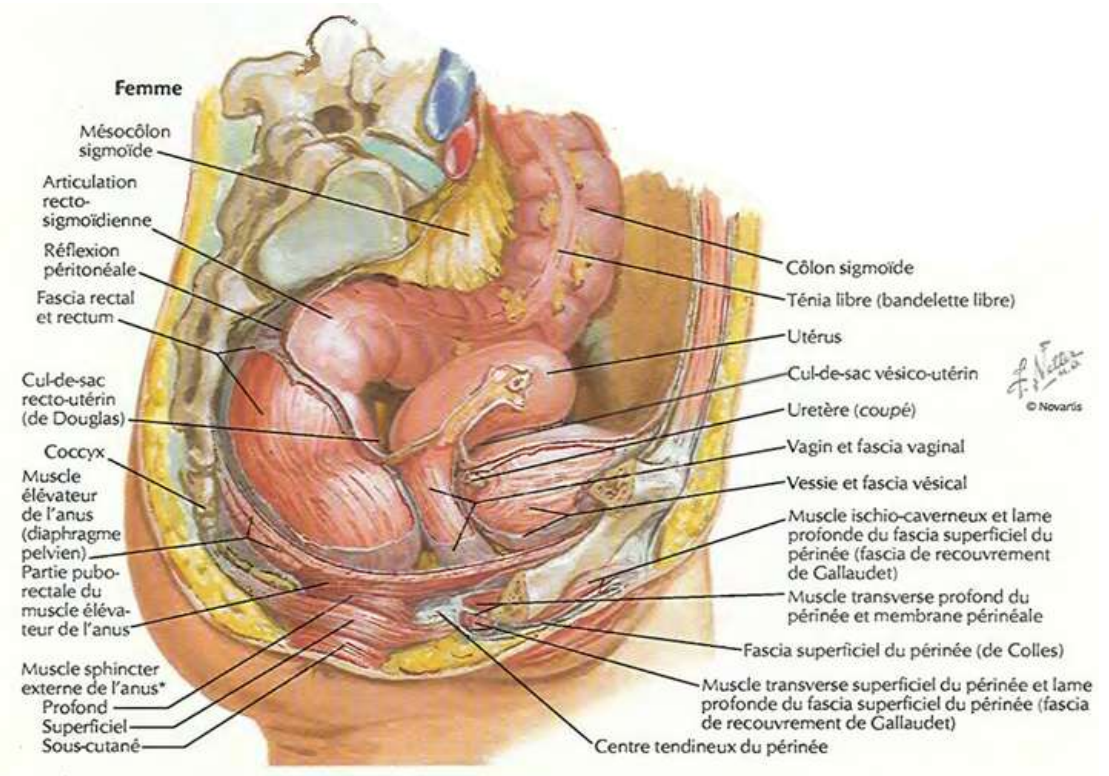
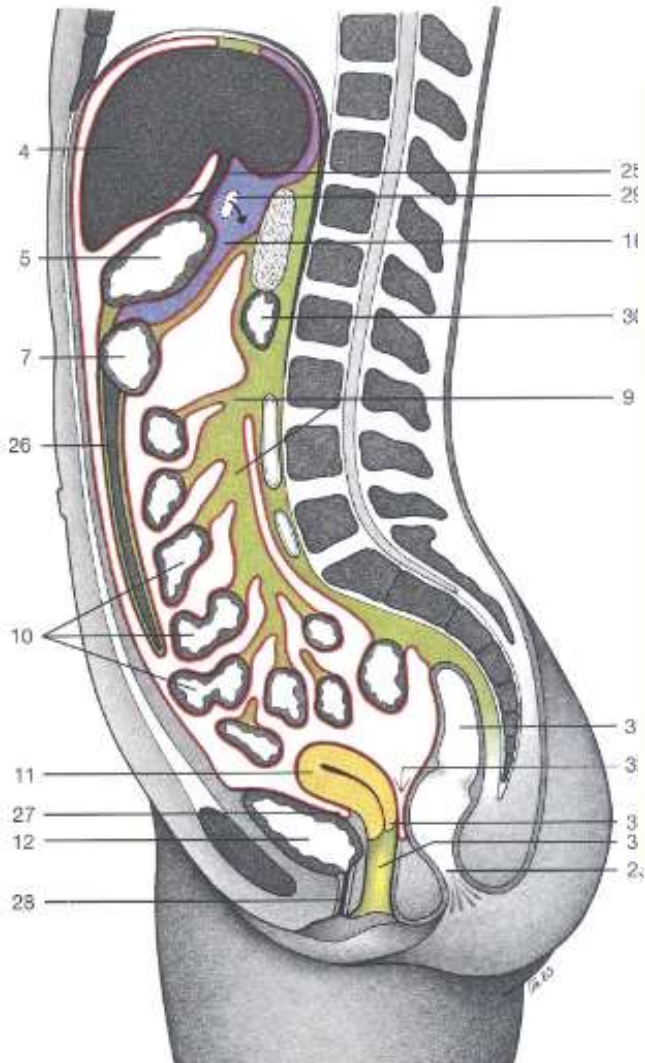
Rapports

- Rapports postérieurs et antérieurs chez l'homme



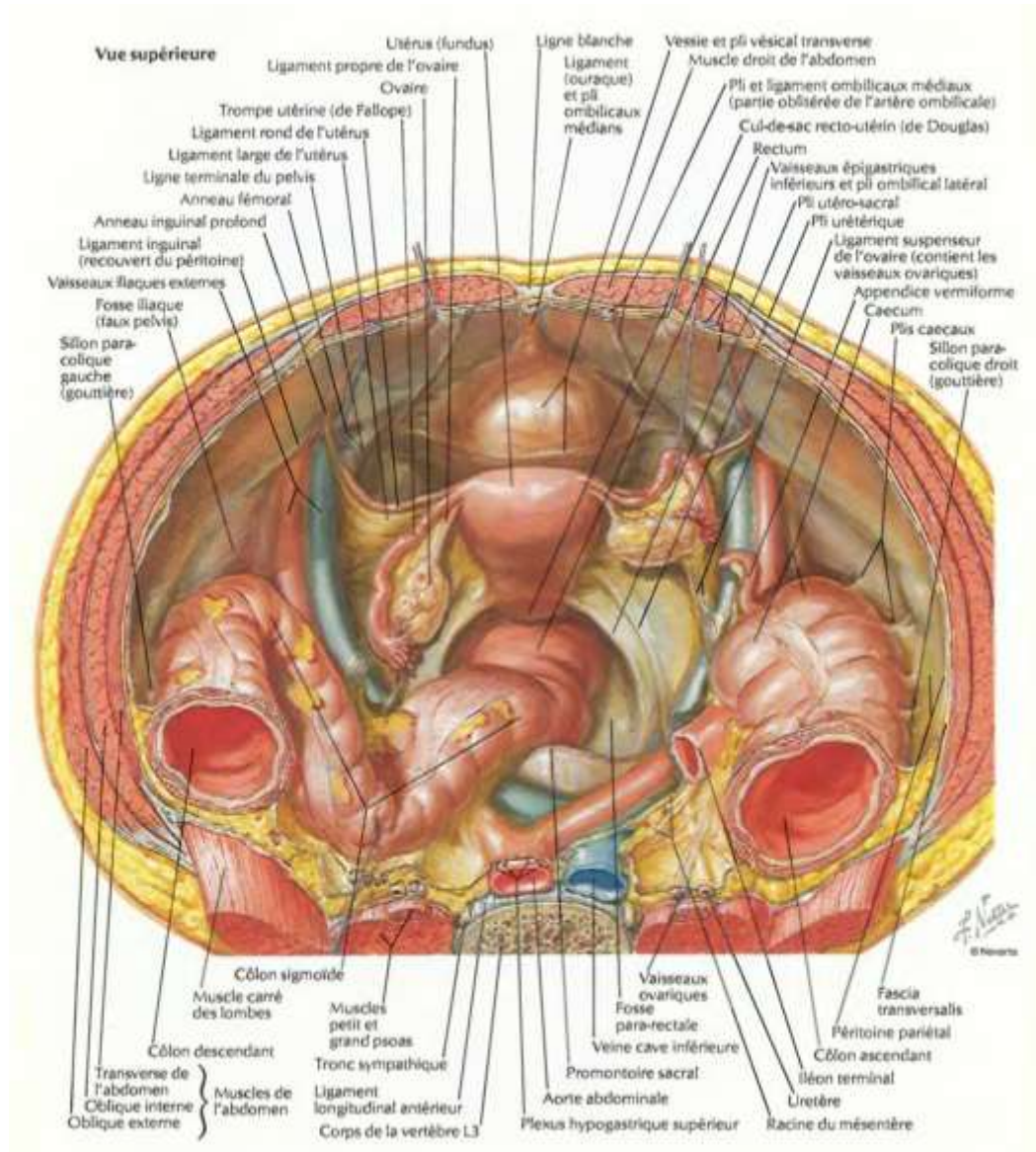
Rapports

- Rapports postérieurs et antérieurs chez la femme



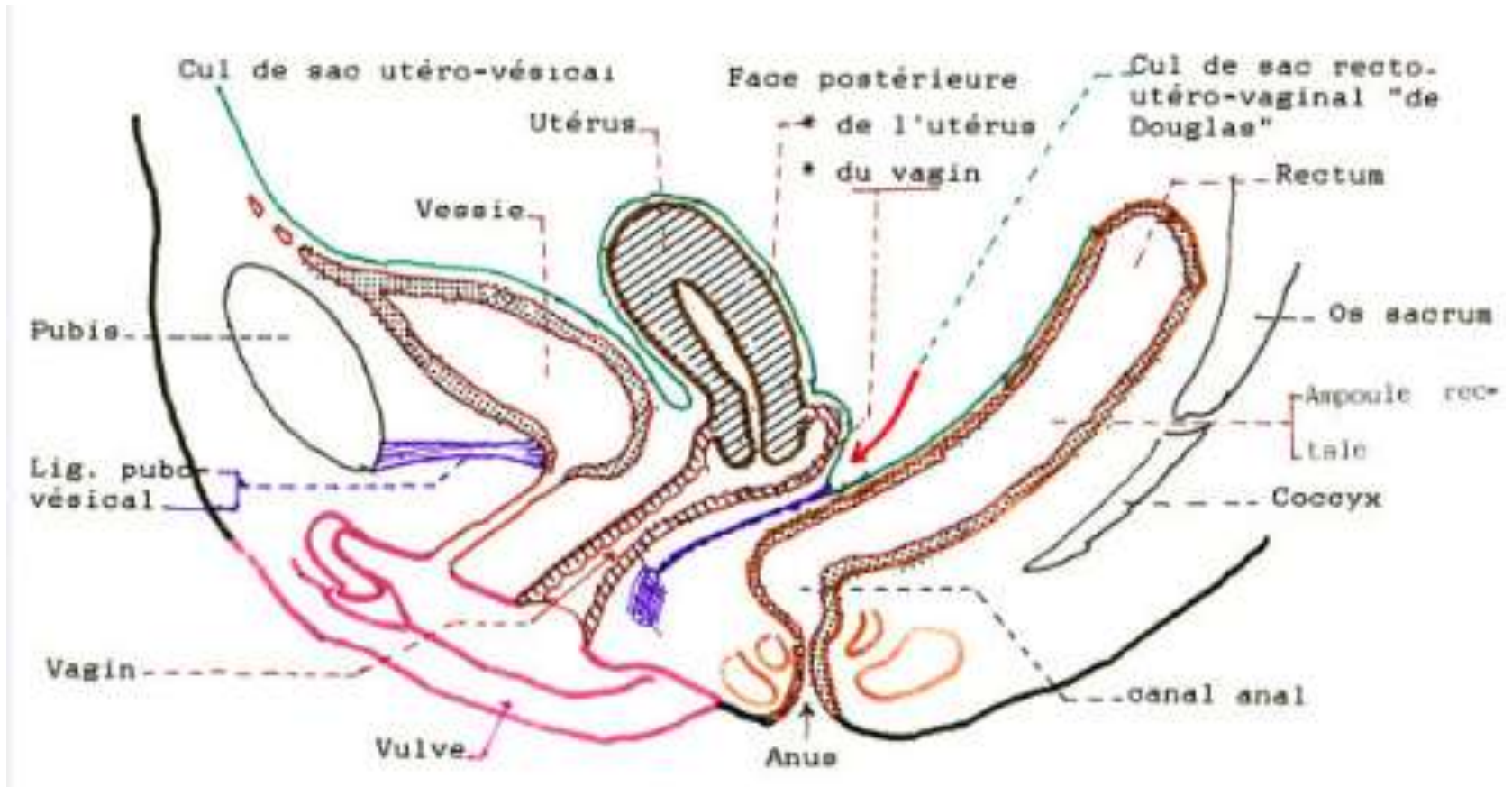
Rapports

- Rapports postérieurs et antérieurs chez la femme



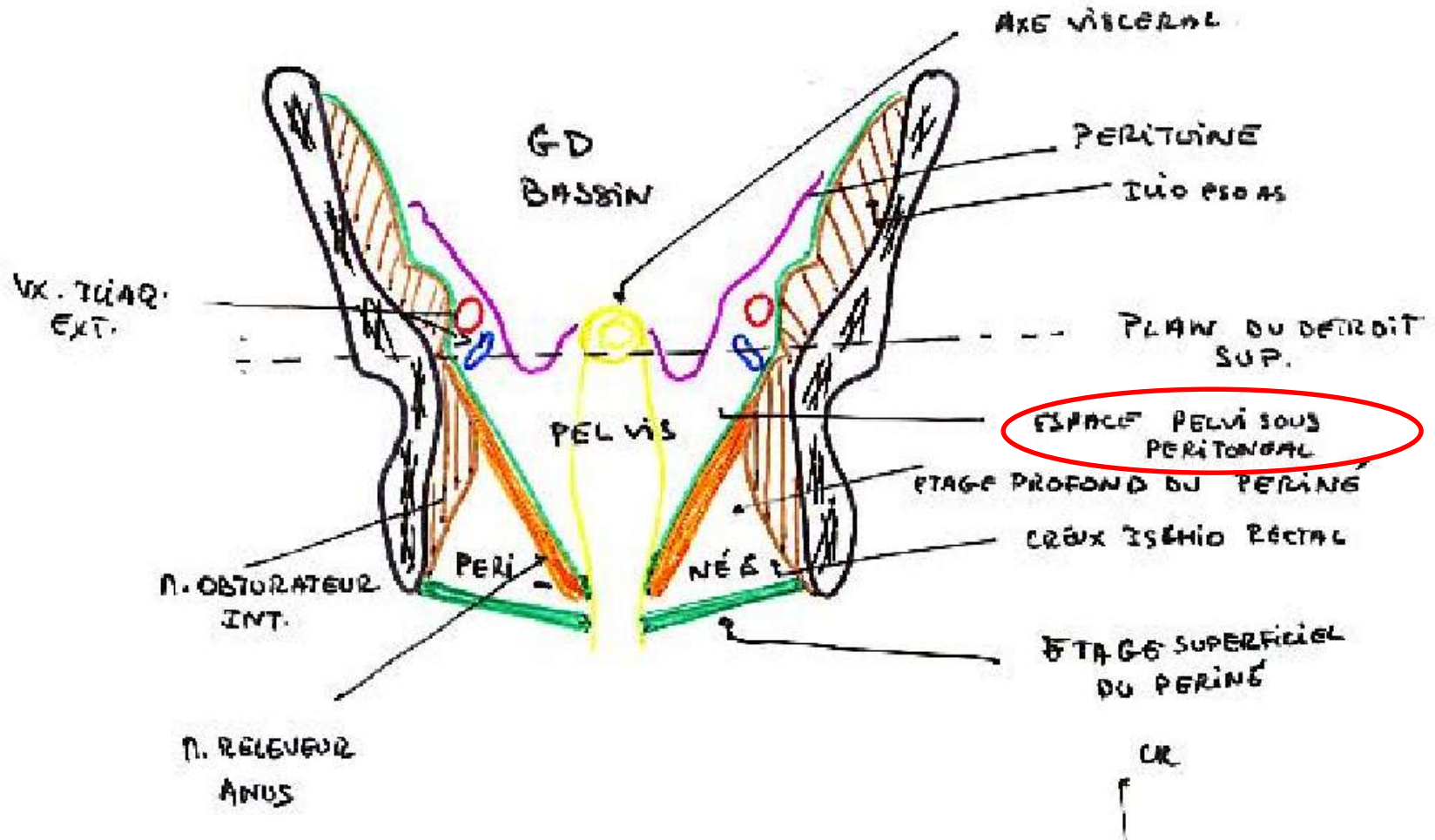
Rapports

- Rapports postérieurs et antérieurs chez la femme



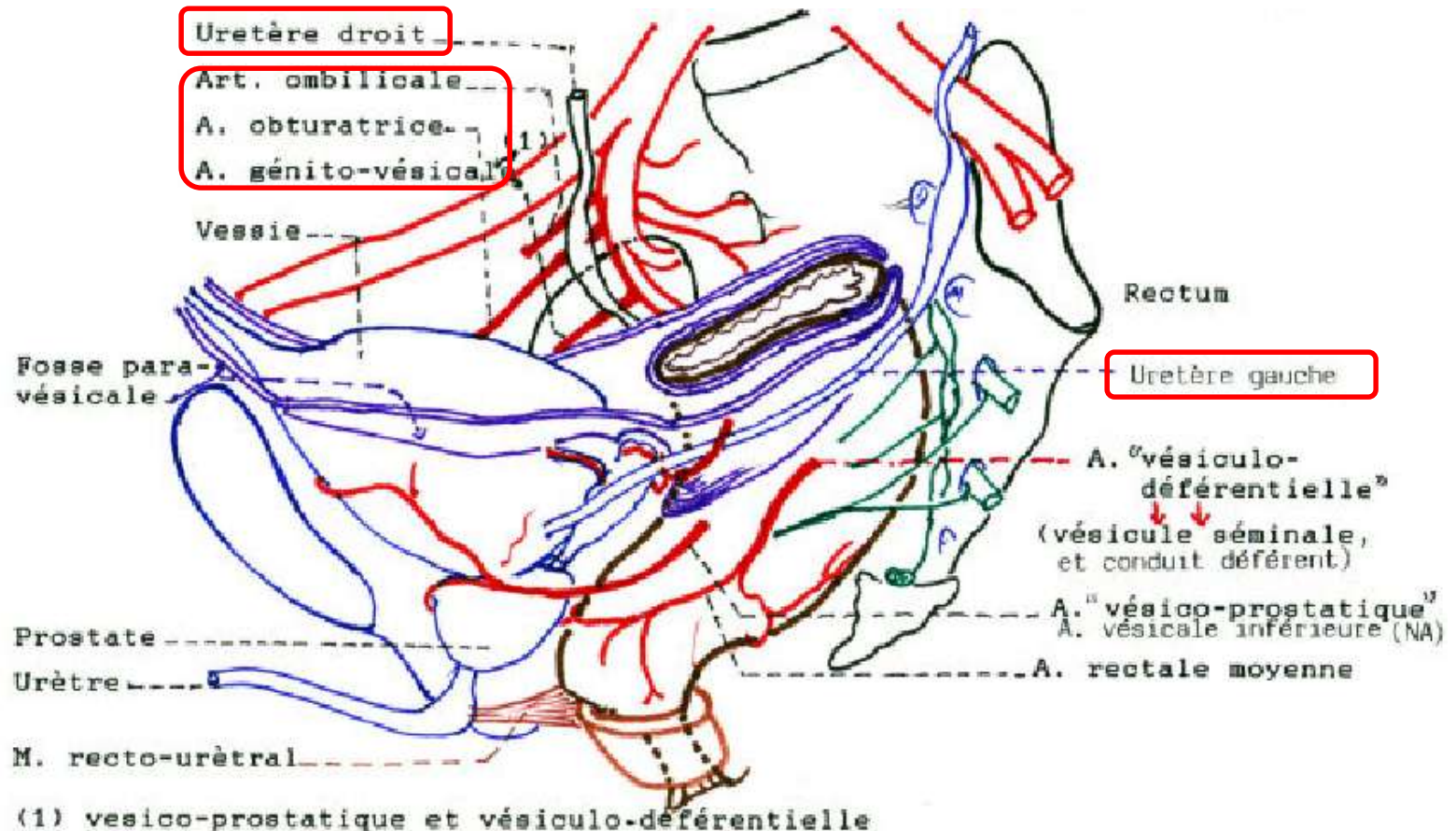
Rapports

- Rapports des faces latérales



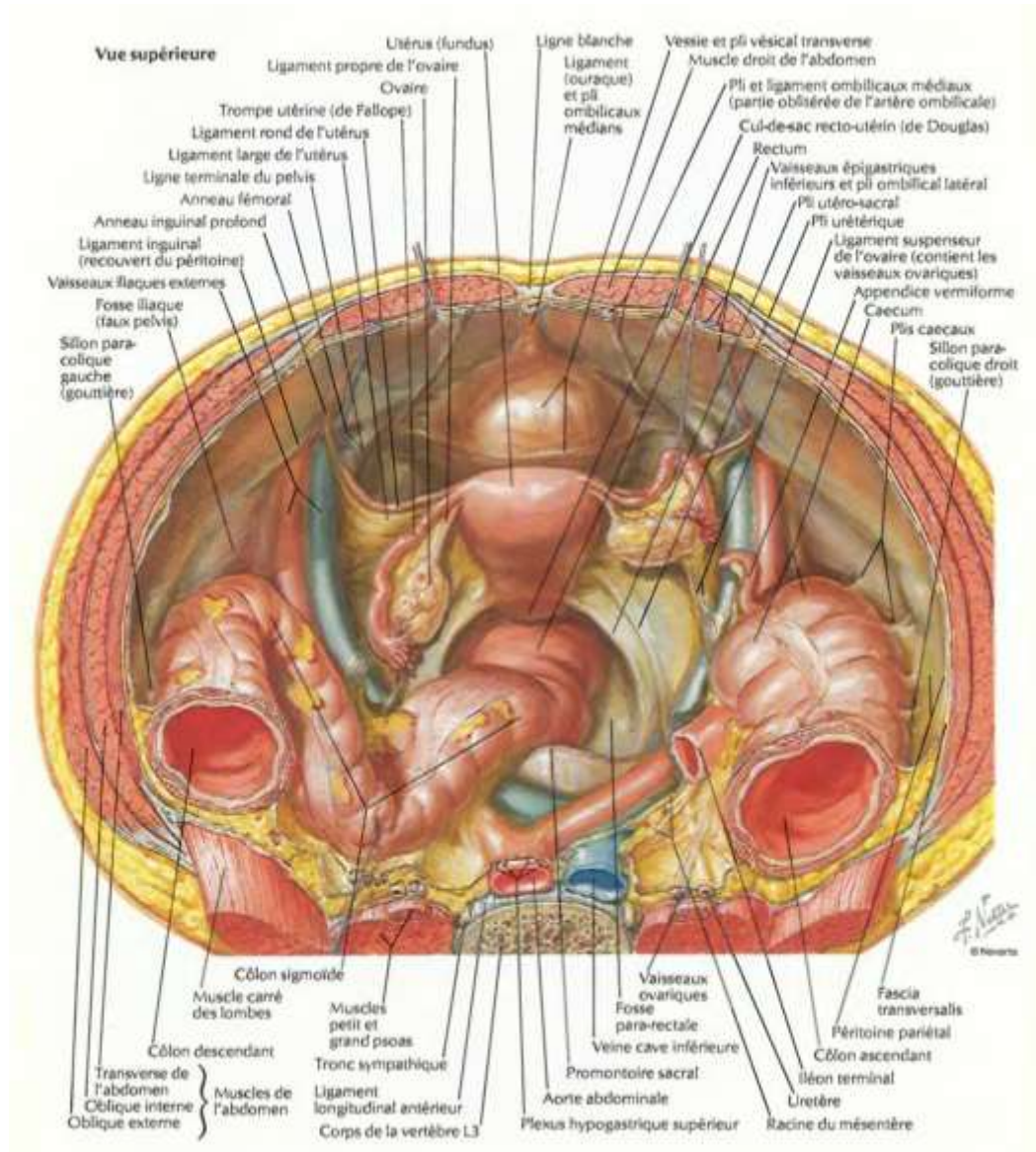
Rapports

- Rapports des faces latérales



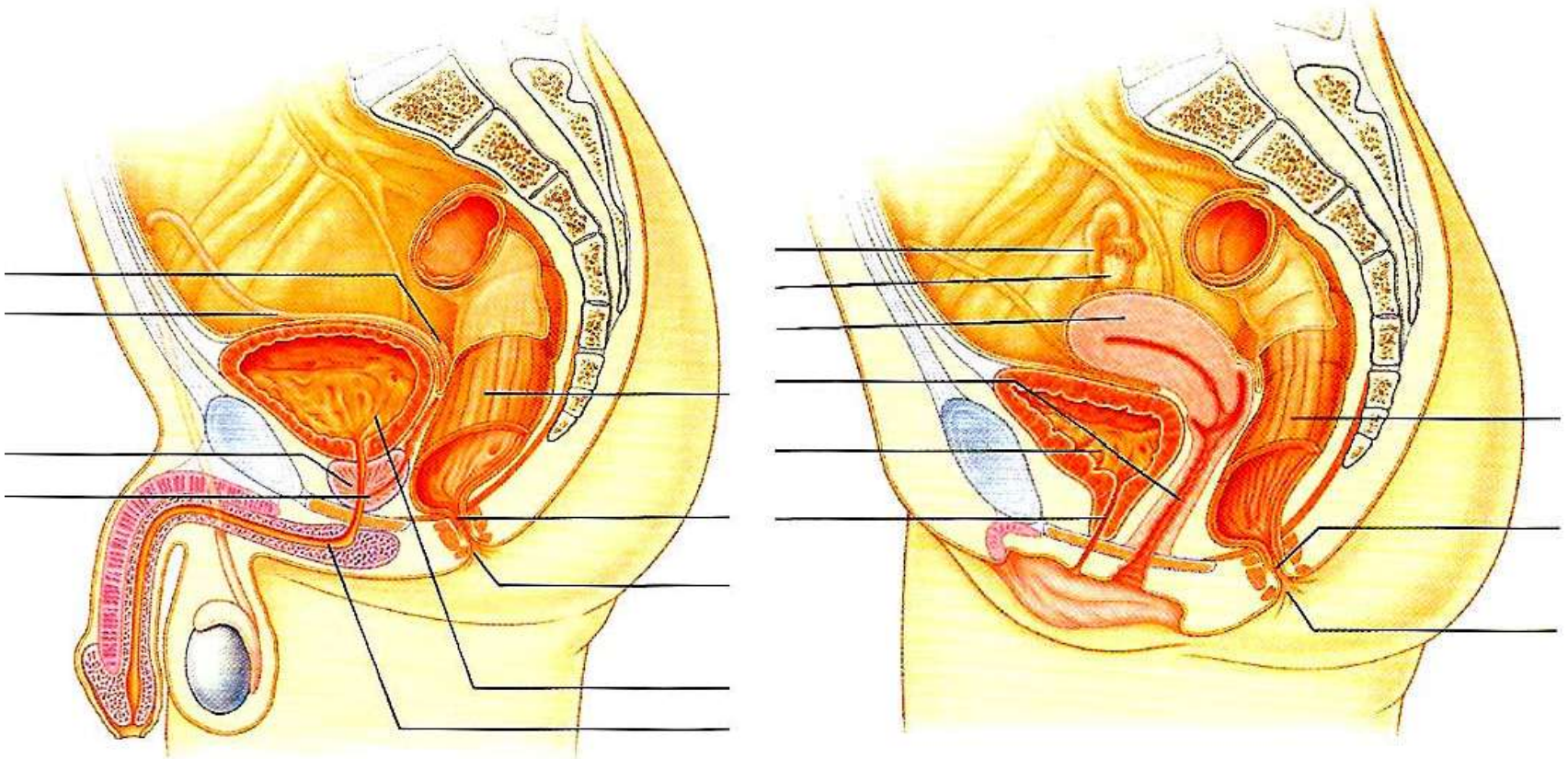
Rapports

- Rapports des faces latérales chez la femme

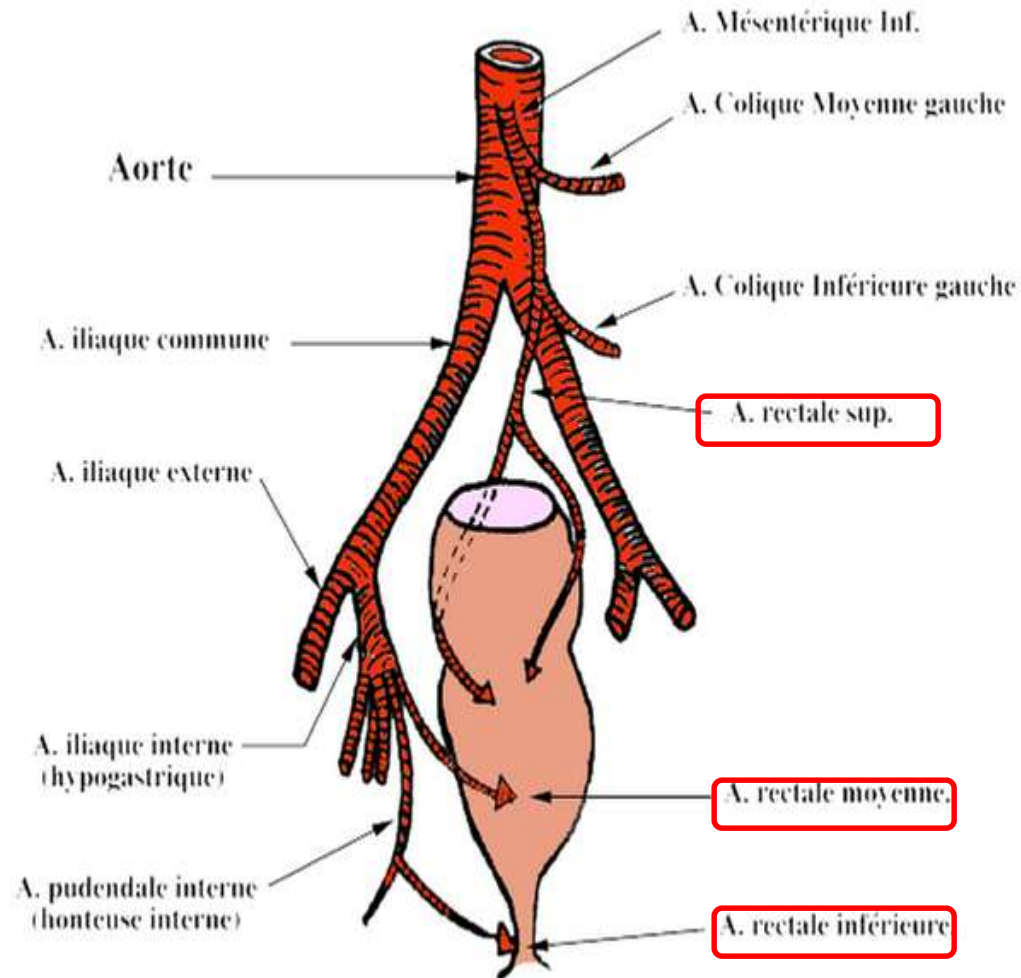
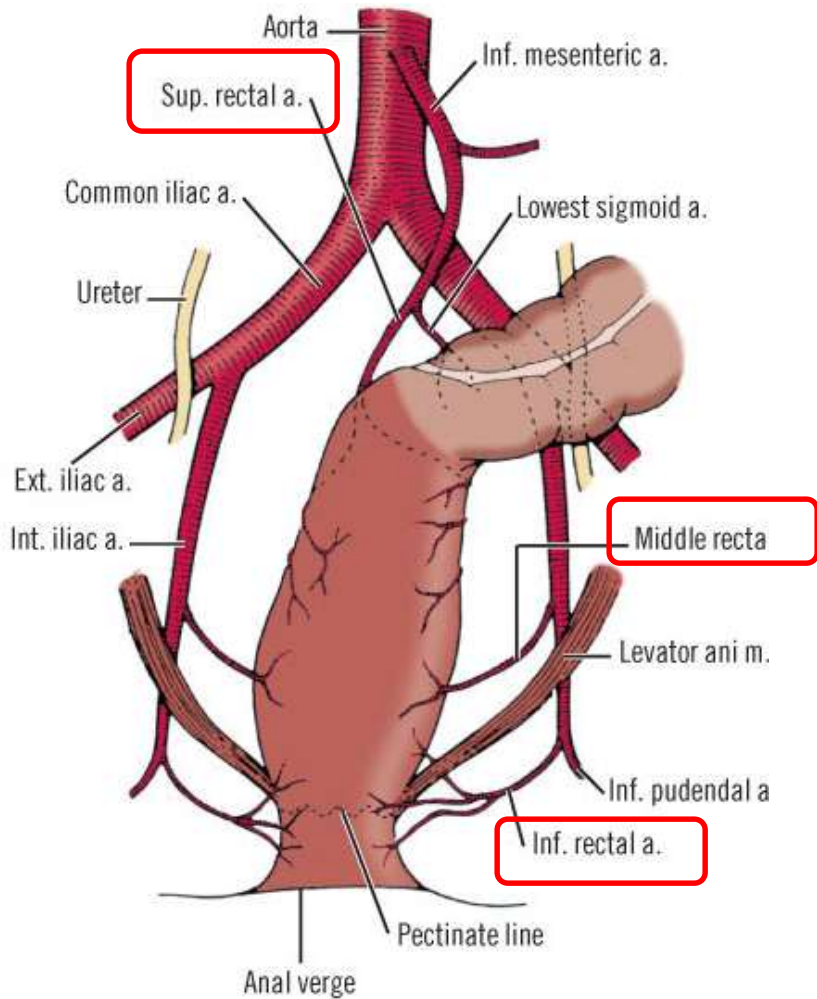


Rapports

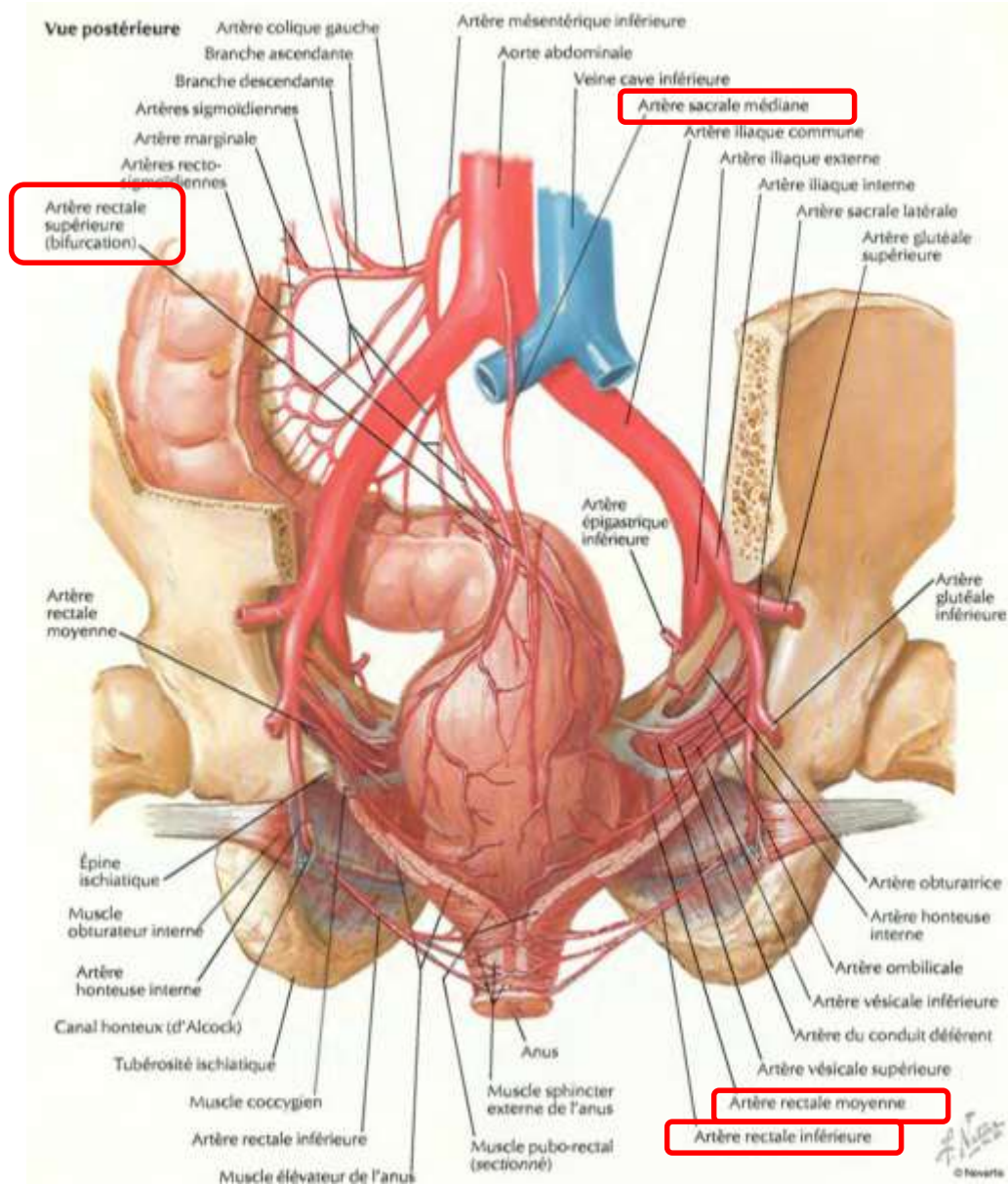
- Rapports du rectum périnéal ou canal anal

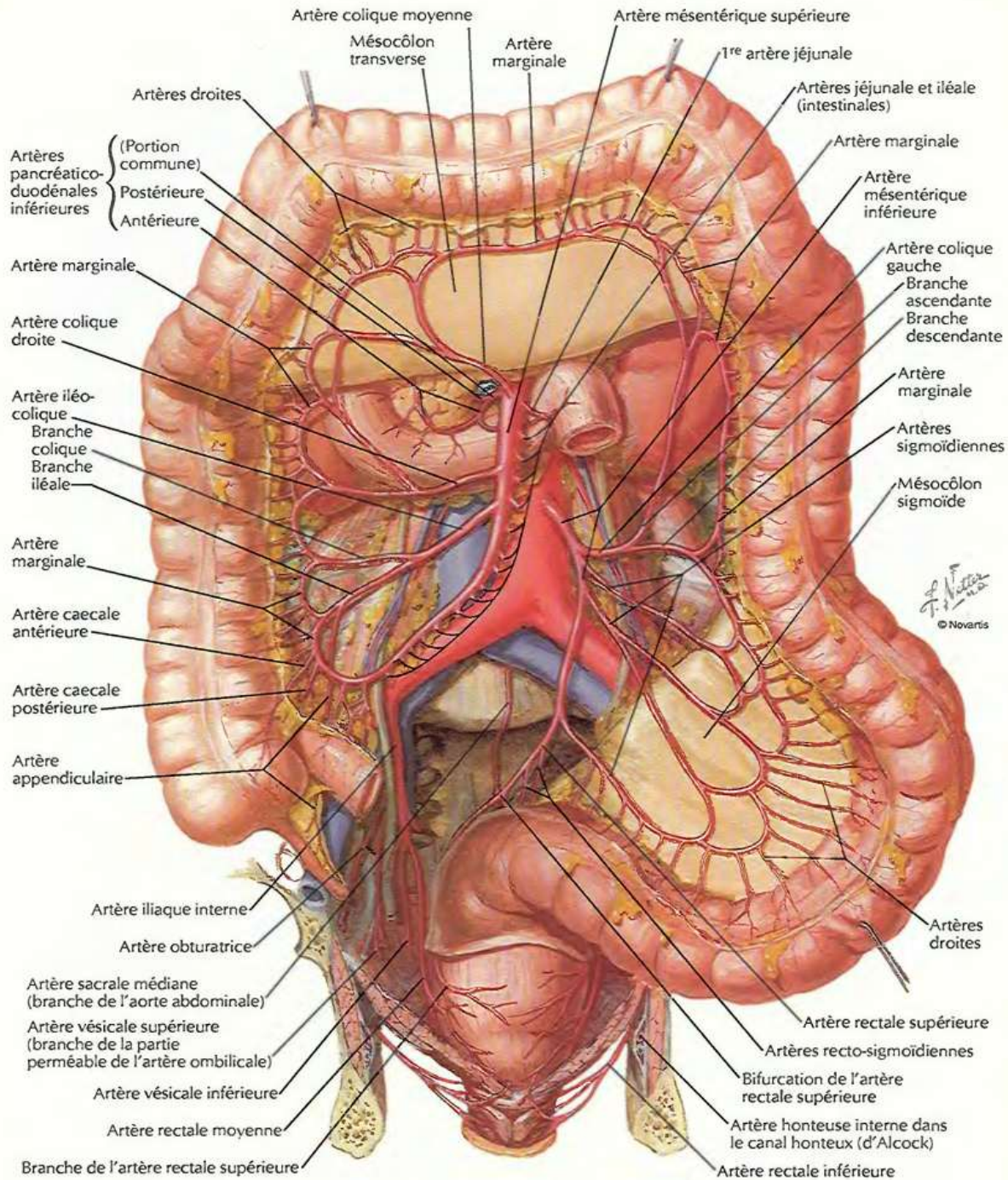


Vascularisation artérielle

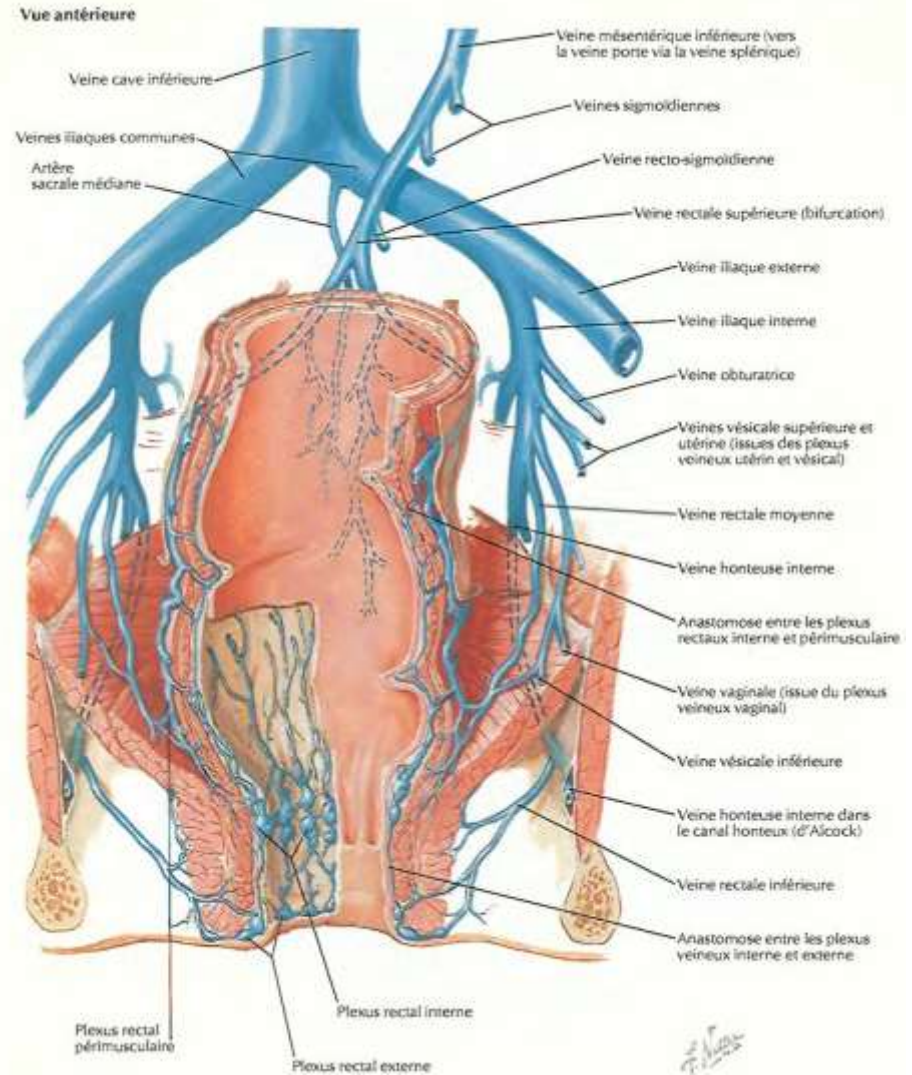
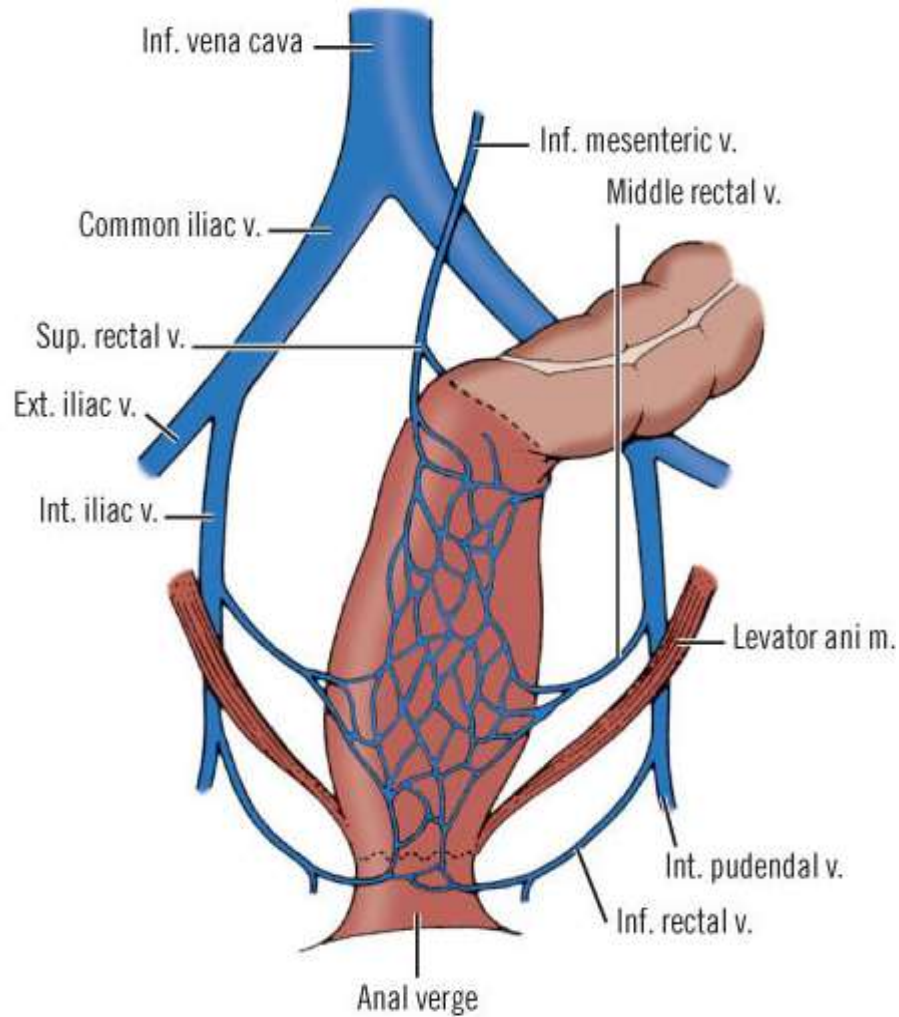


Vascularisation artérielle

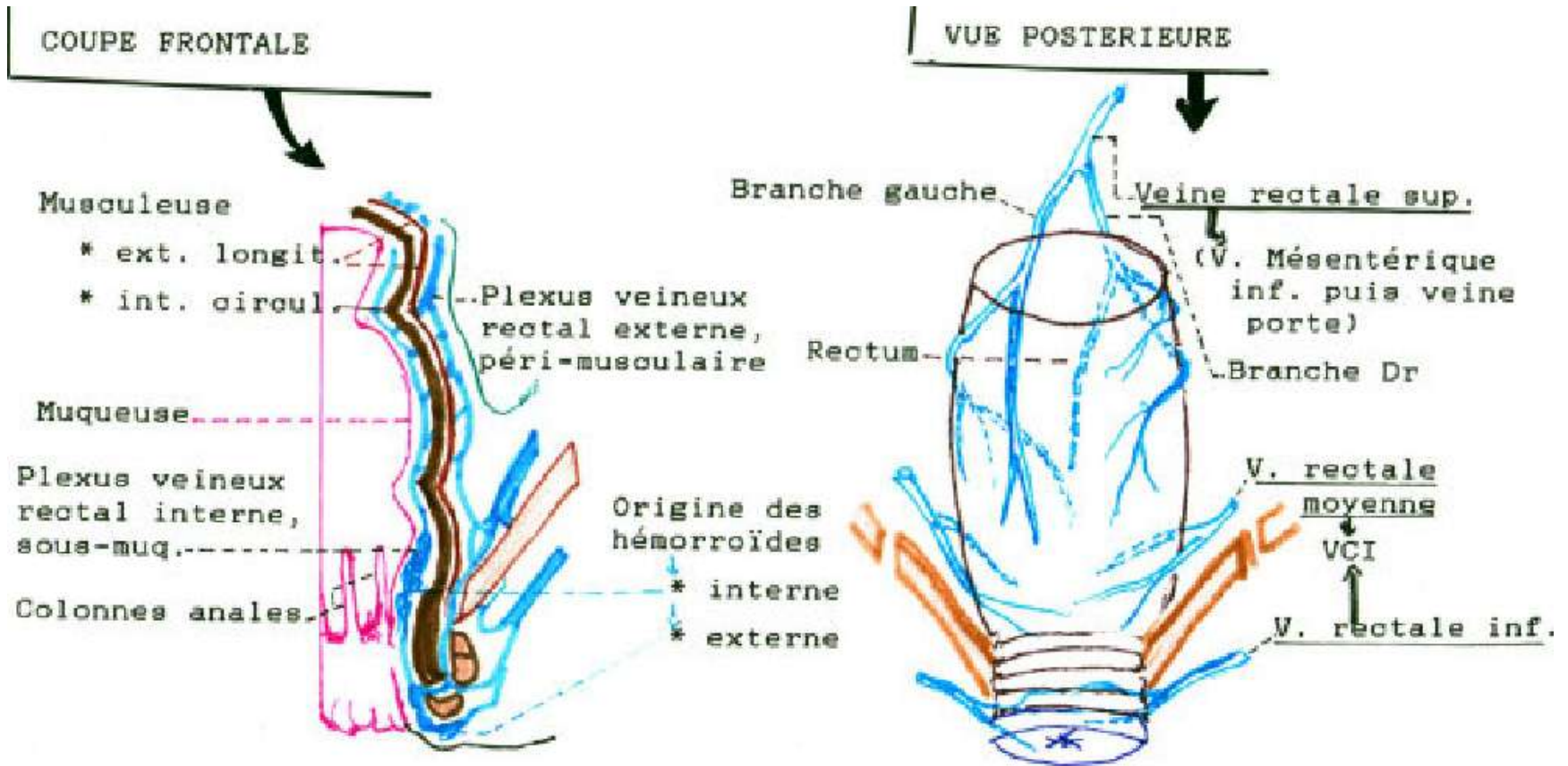




Vascularisation veineuse

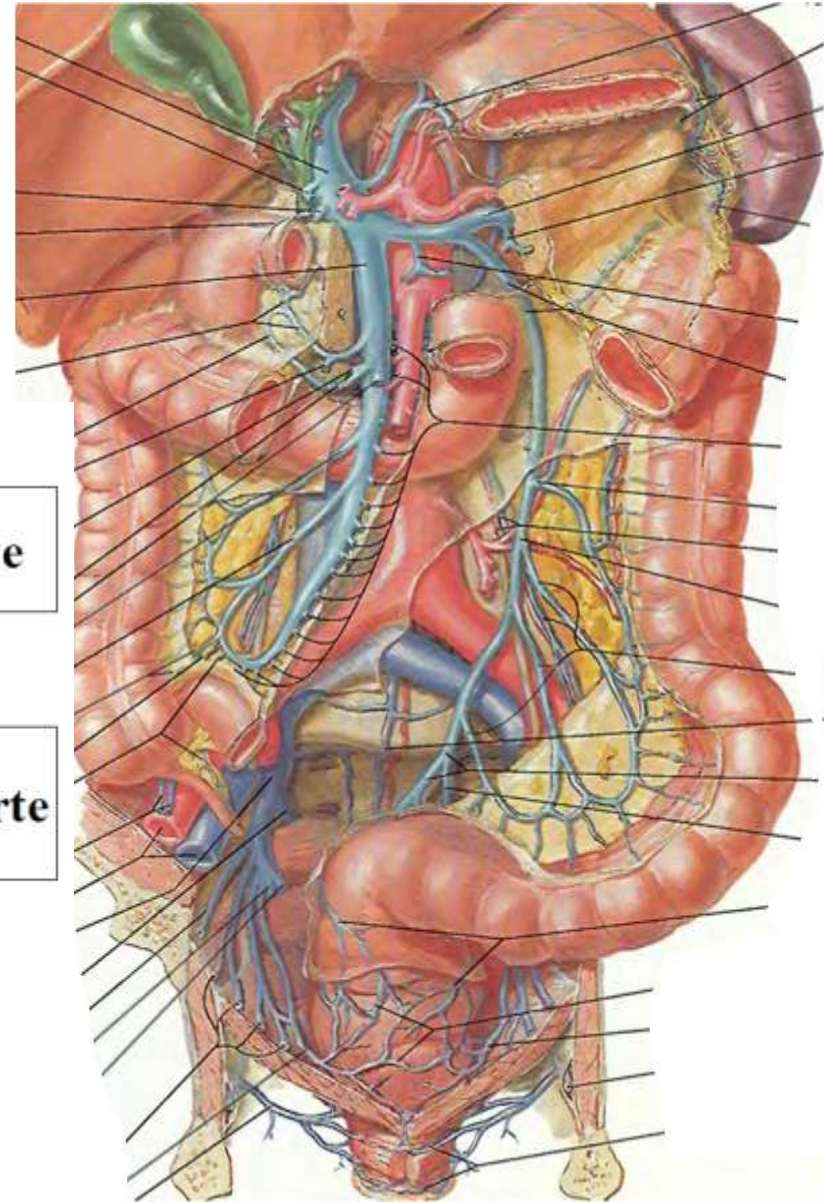
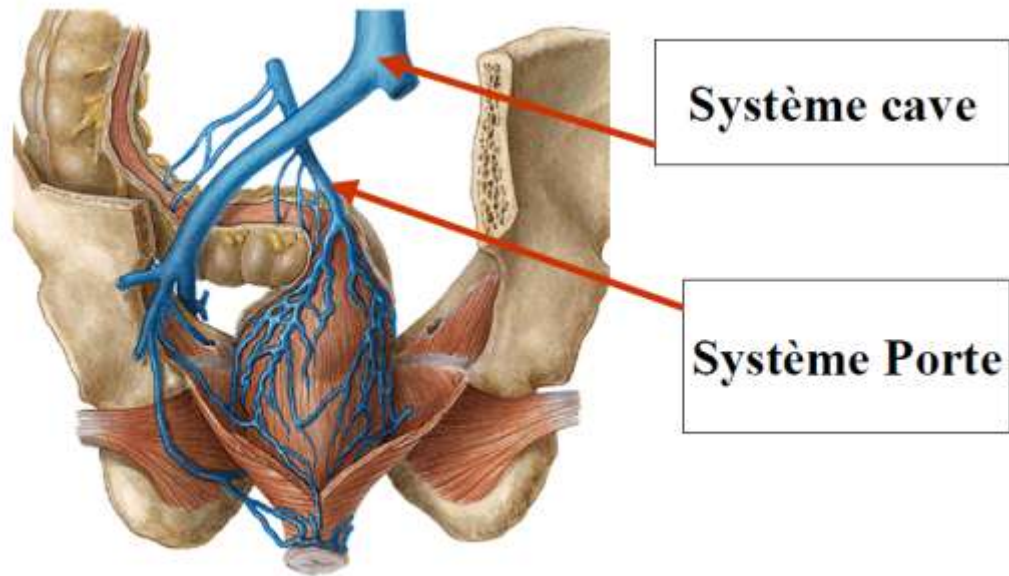


Vascularisation veineuse

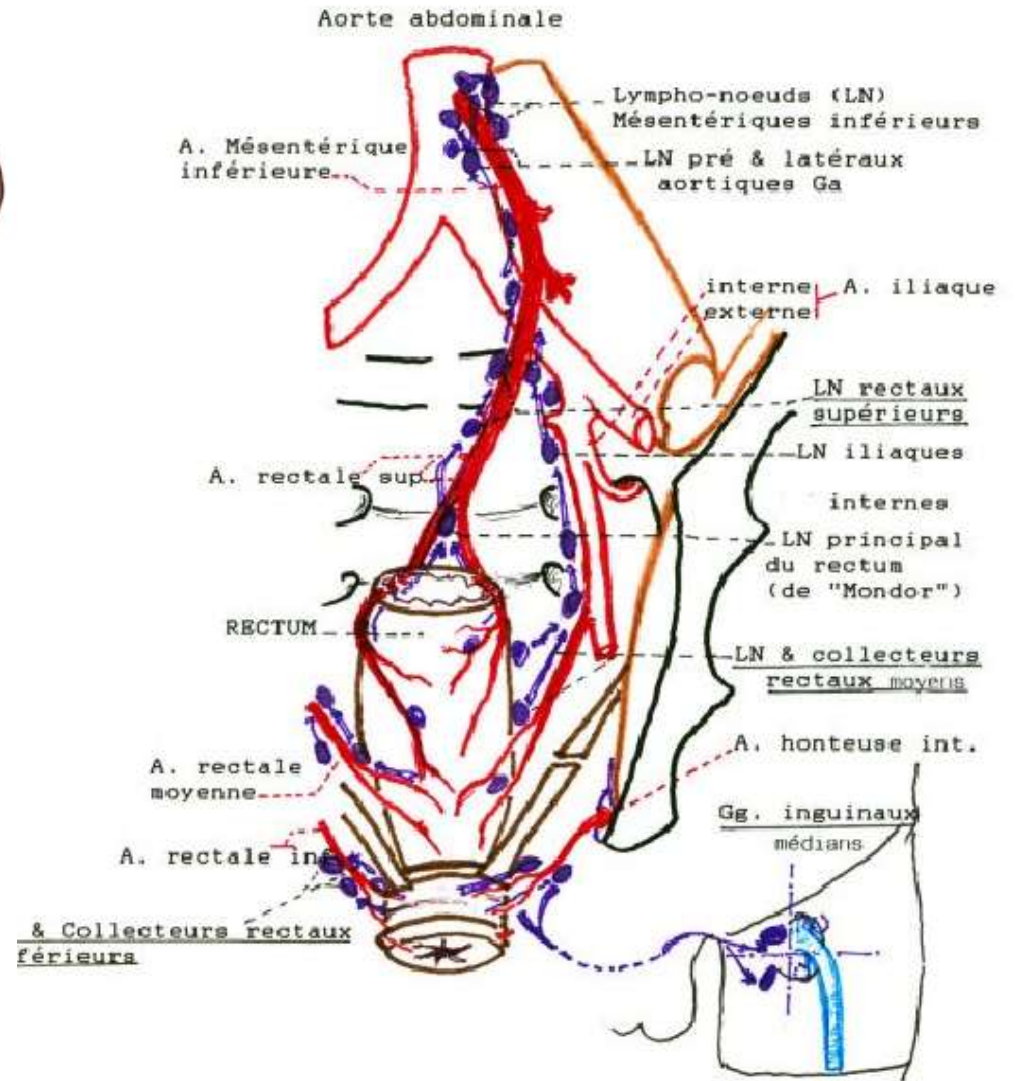
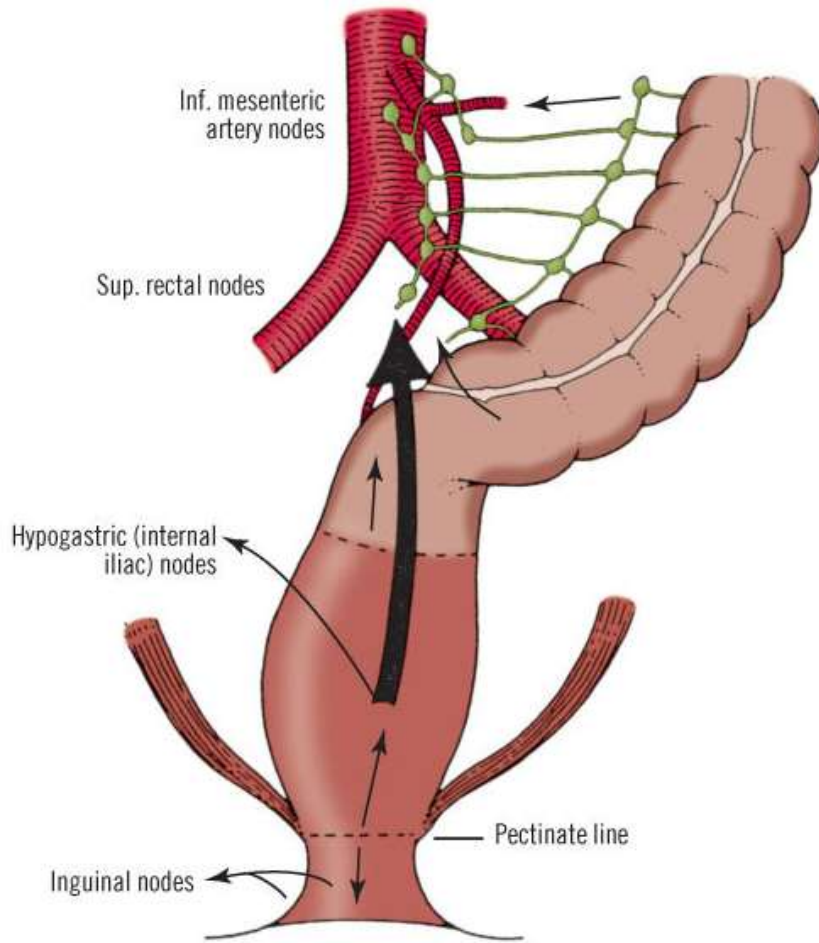


Vascularisation veineuse

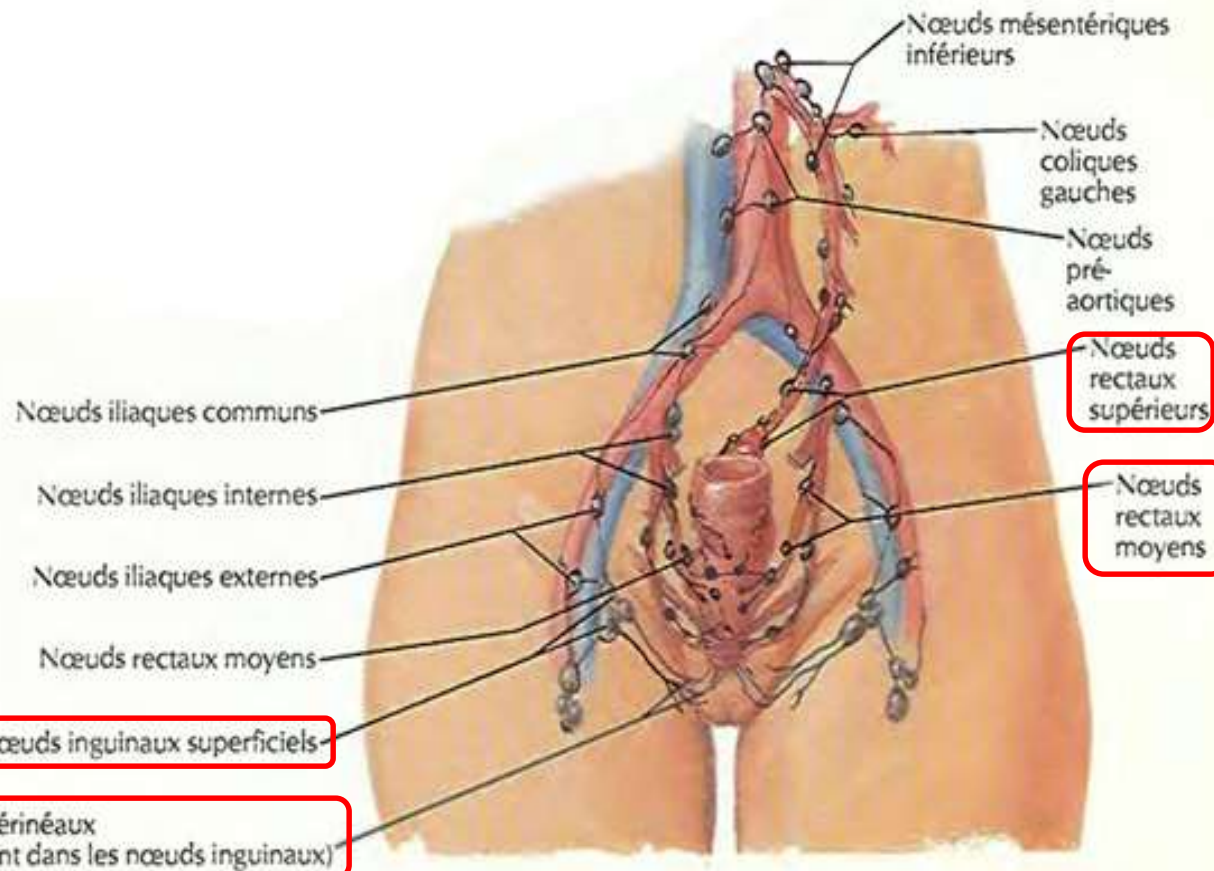
- Anastomoses porto – cave



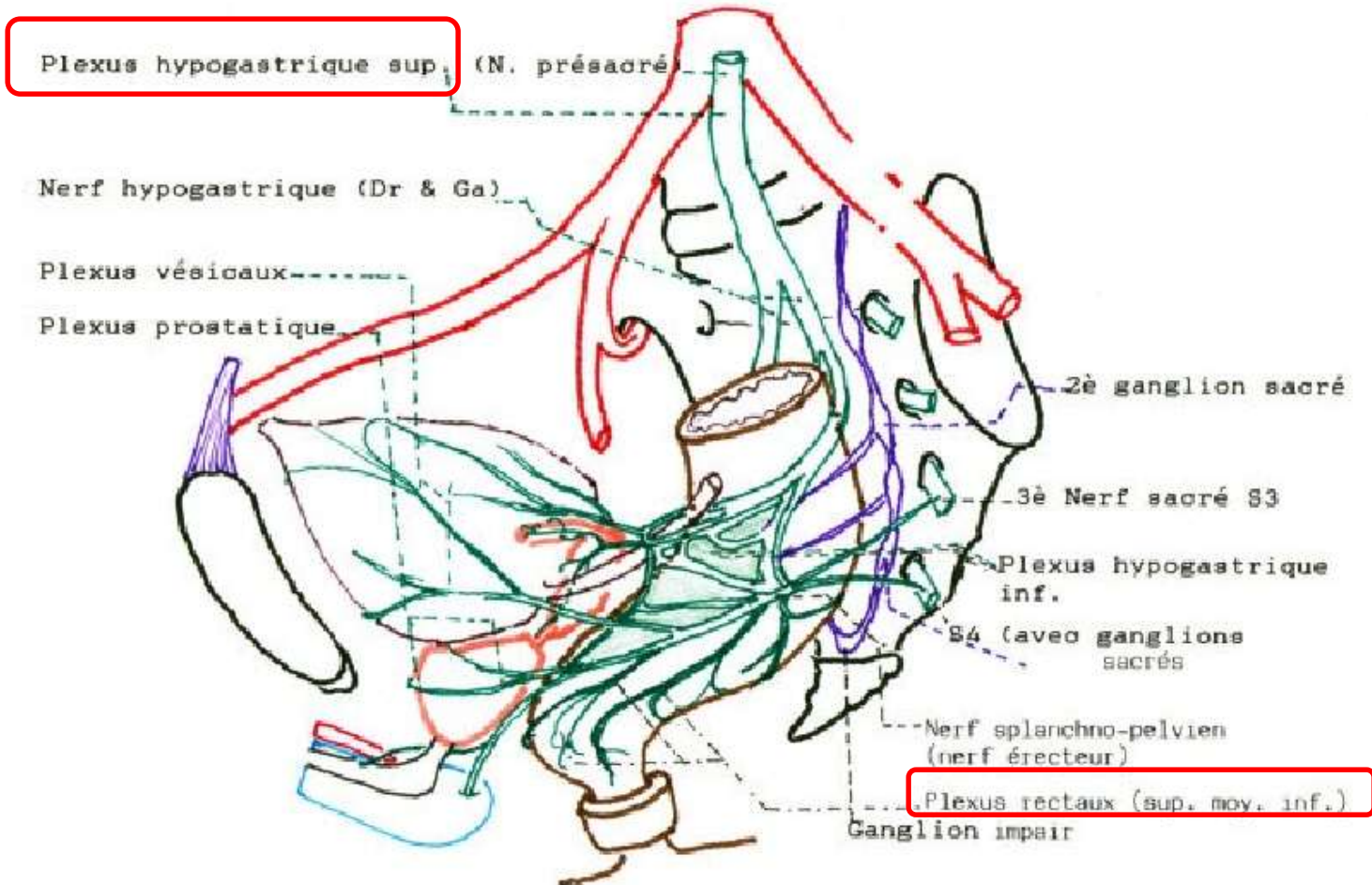
Lymphatiques



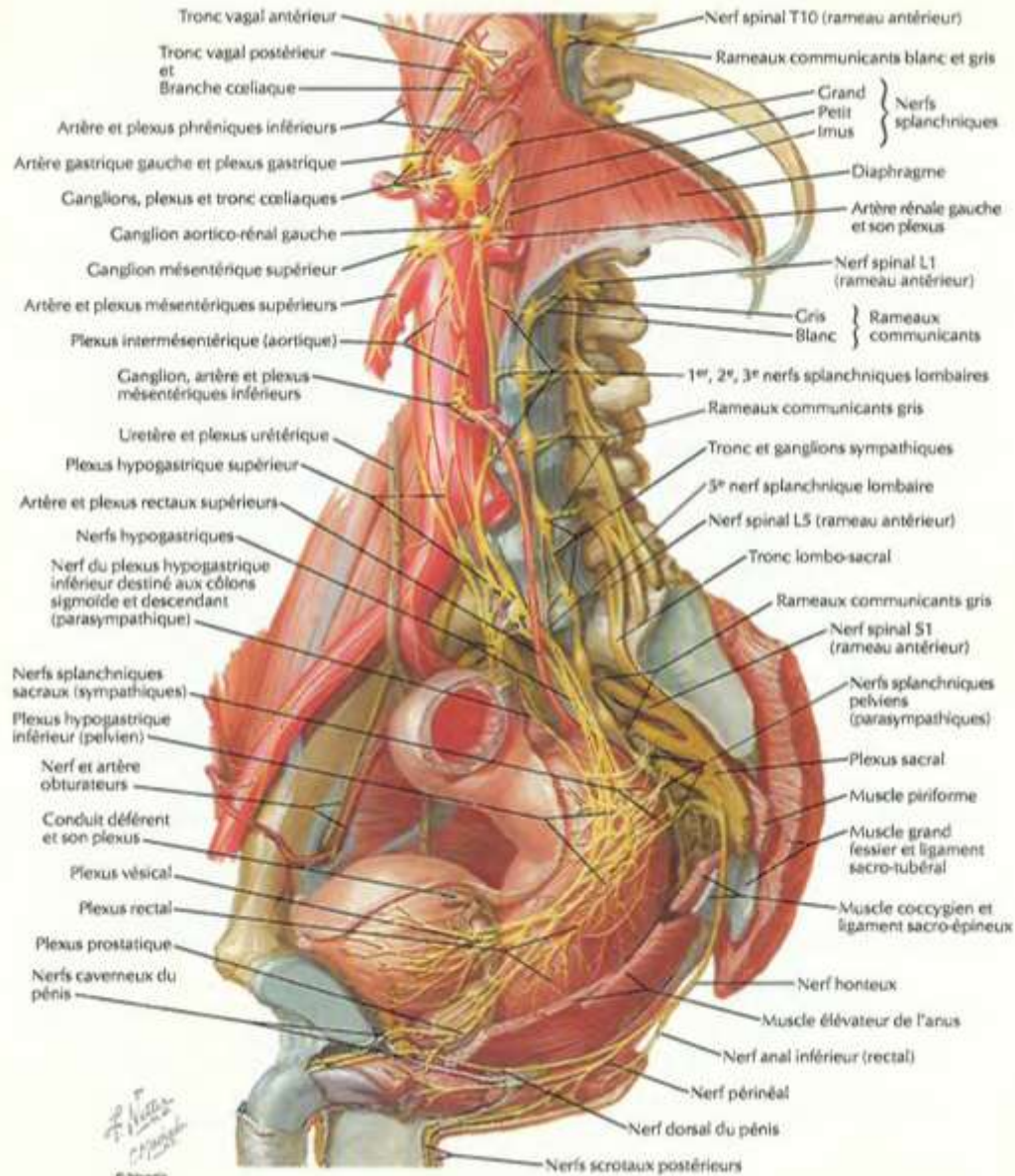
Lymphatiques



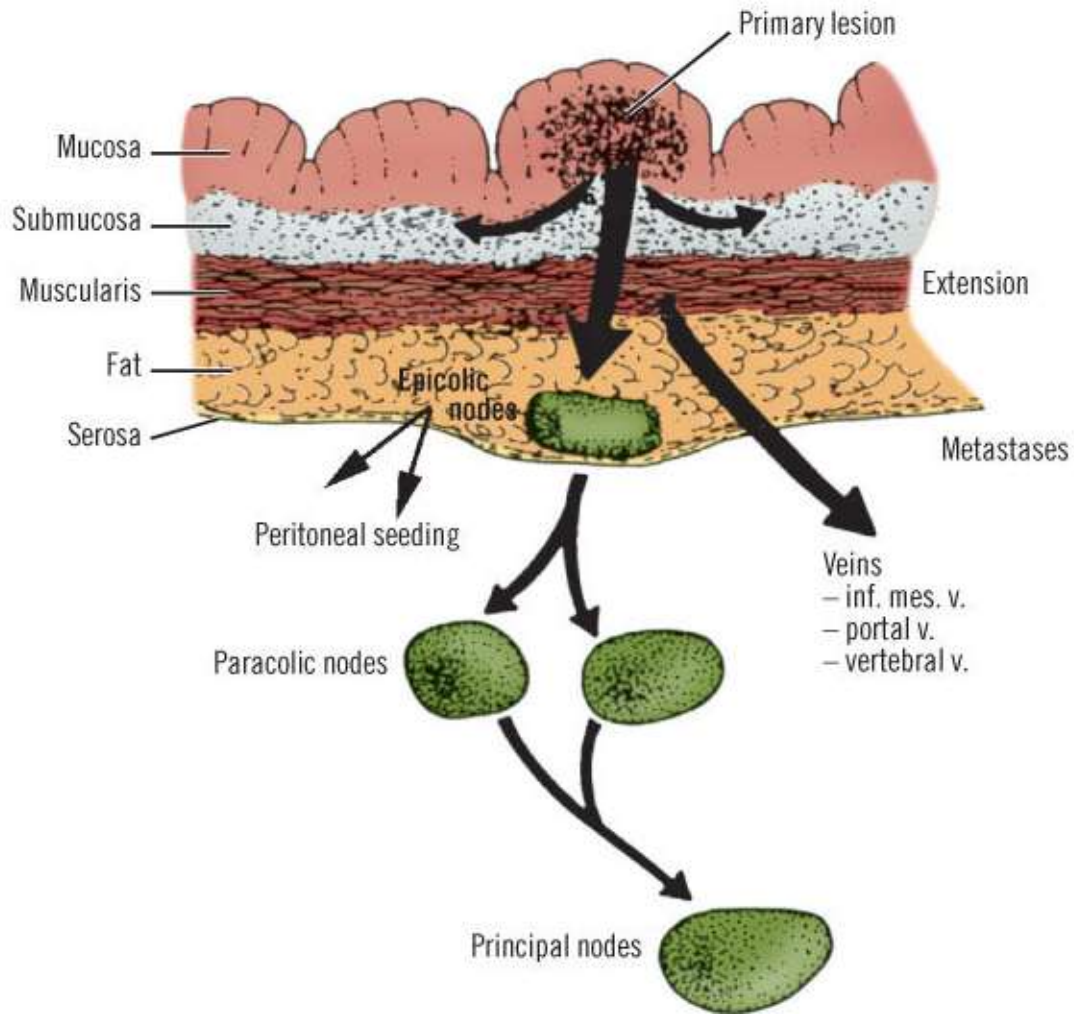
Innervation



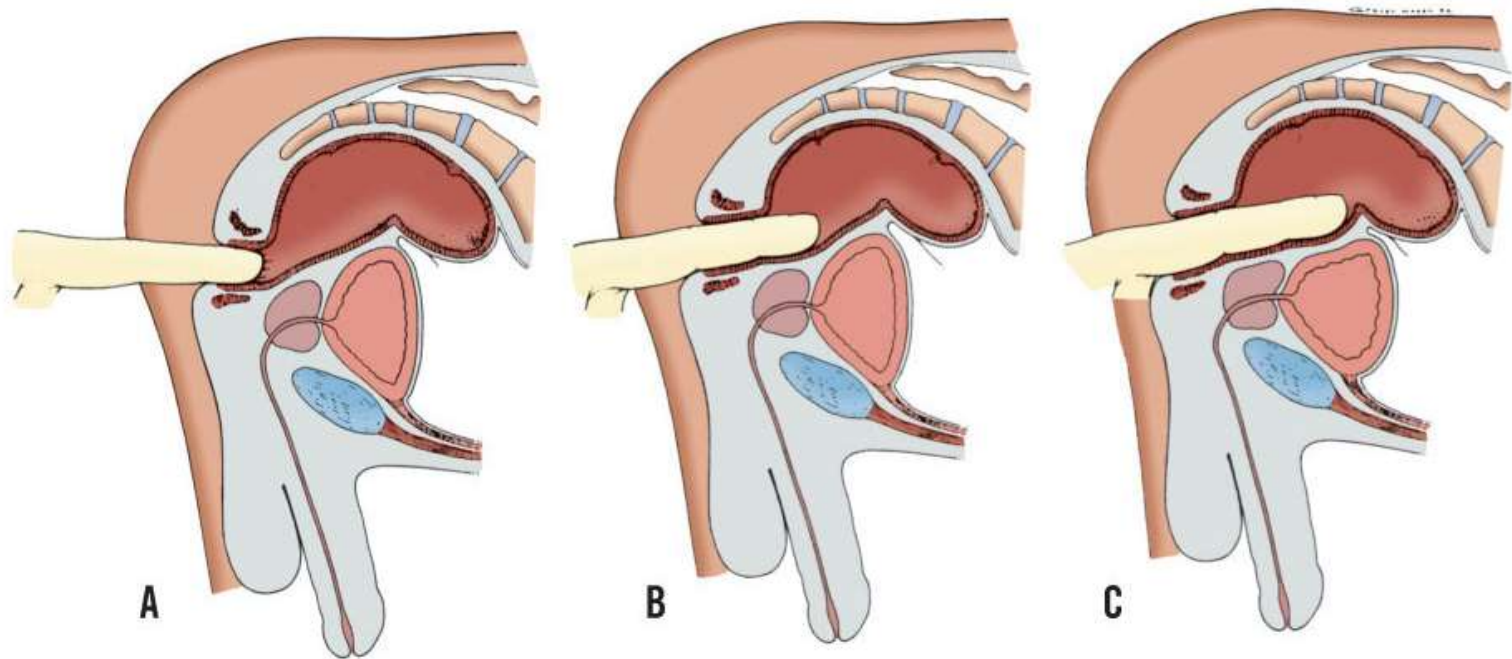
Innervation



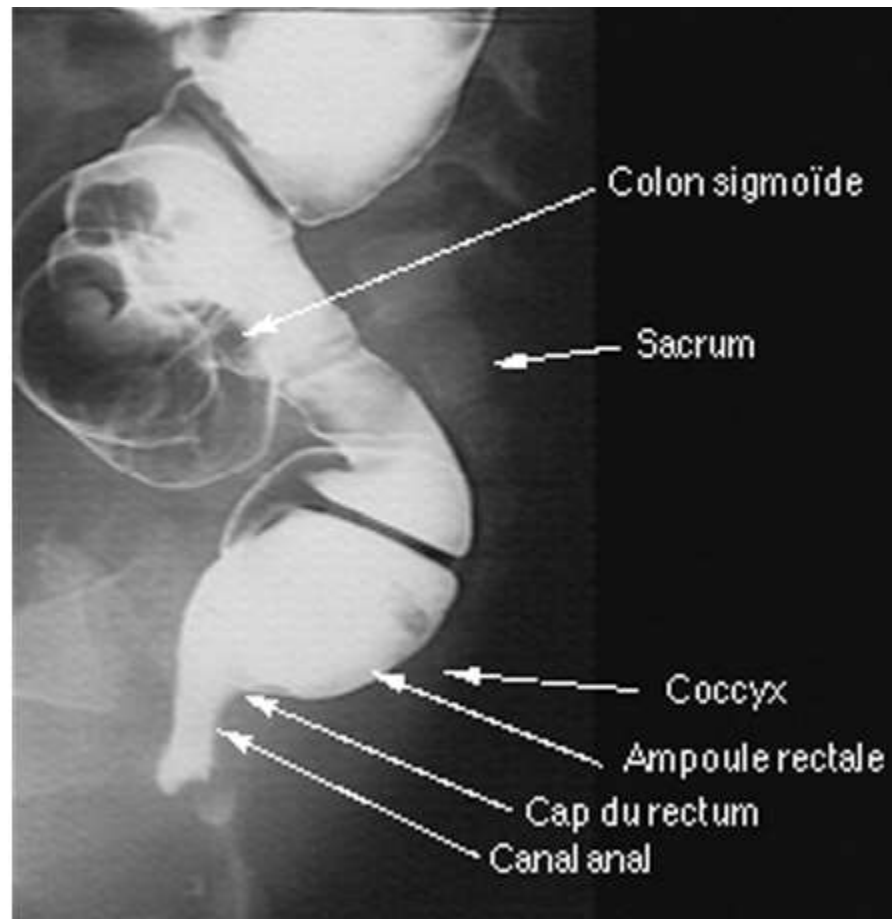
Applications radio - cliniques

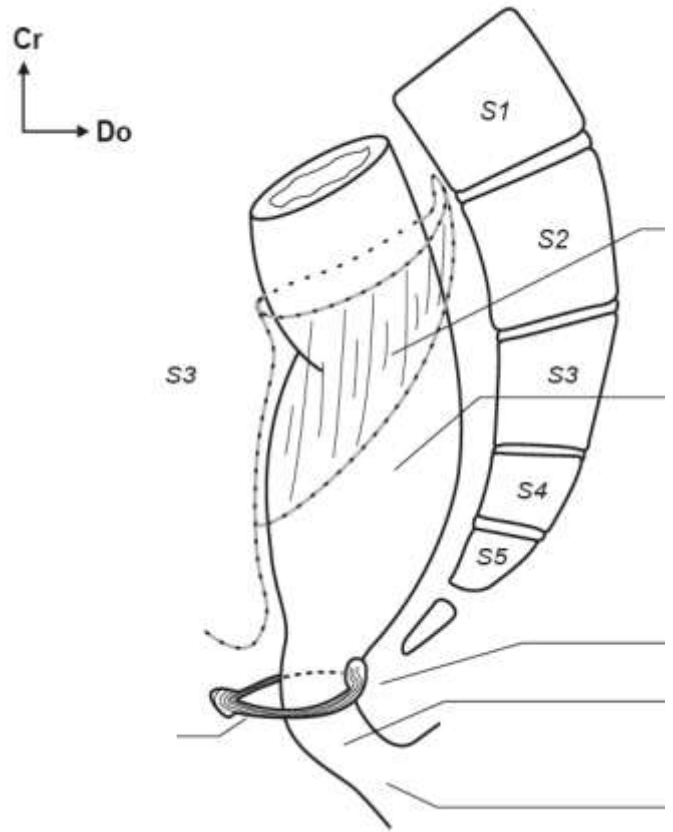


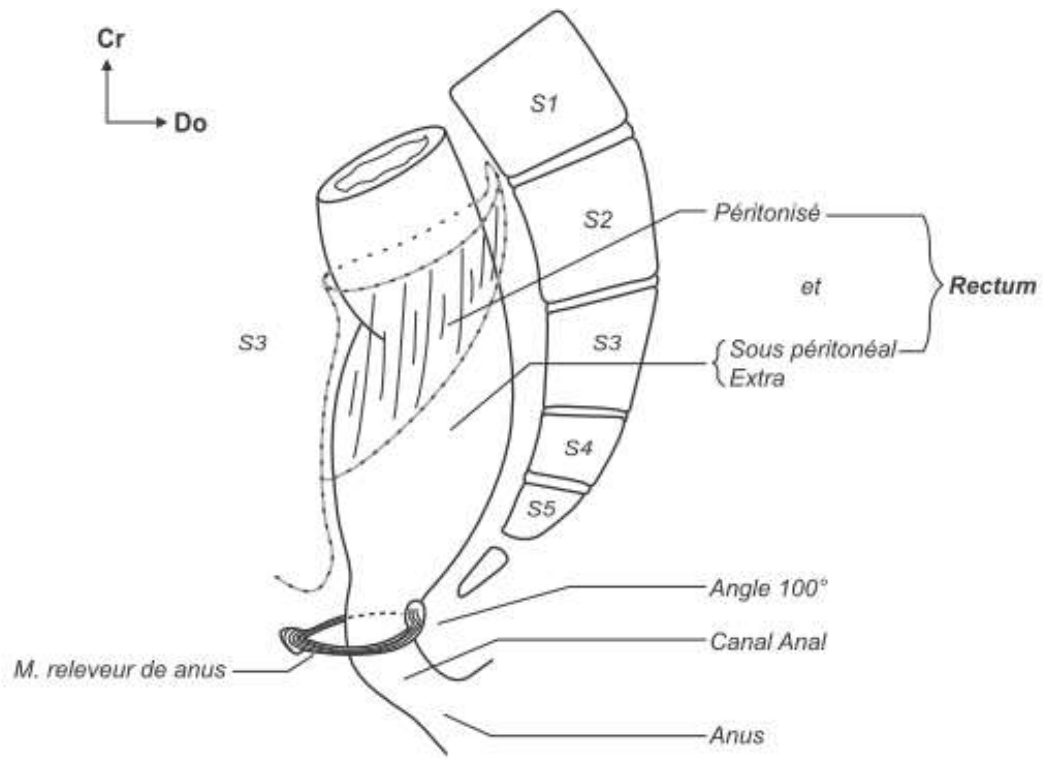
Applications radio - cliniques

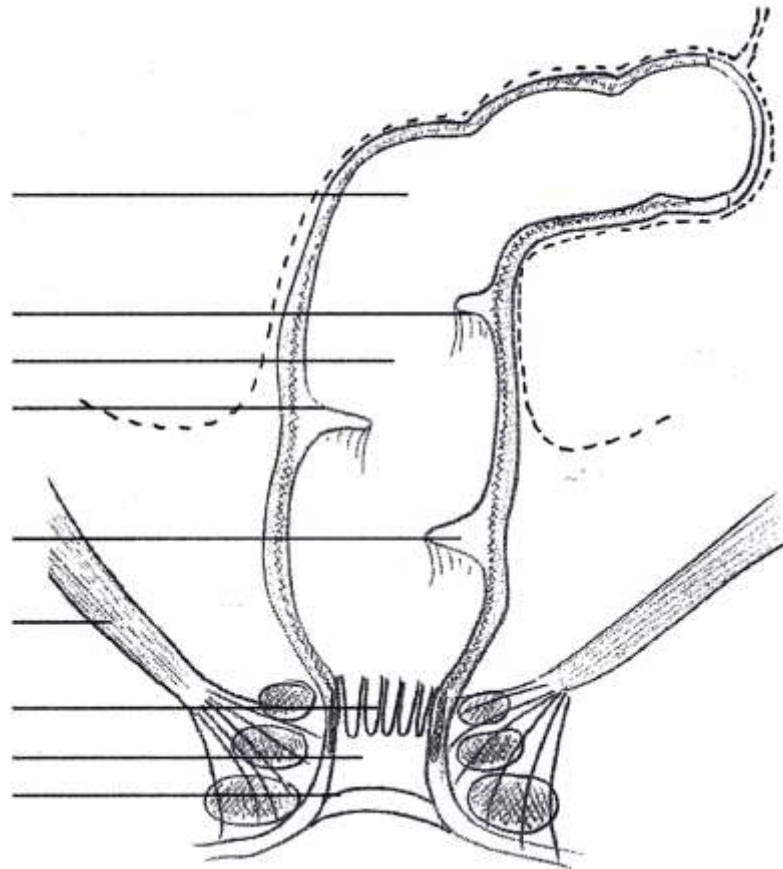


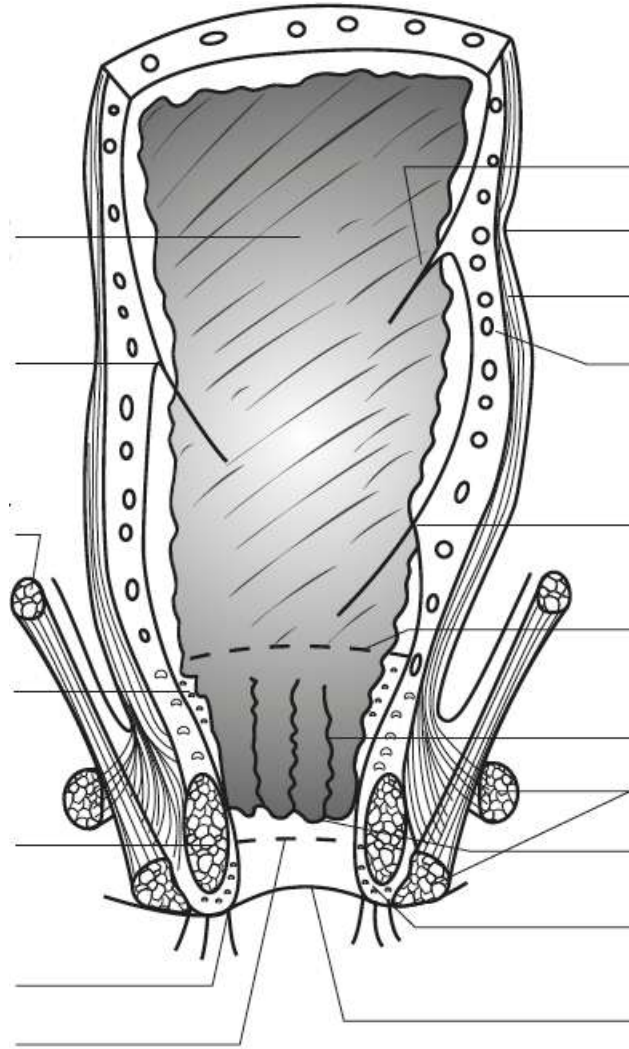
Applications radio - cliniques

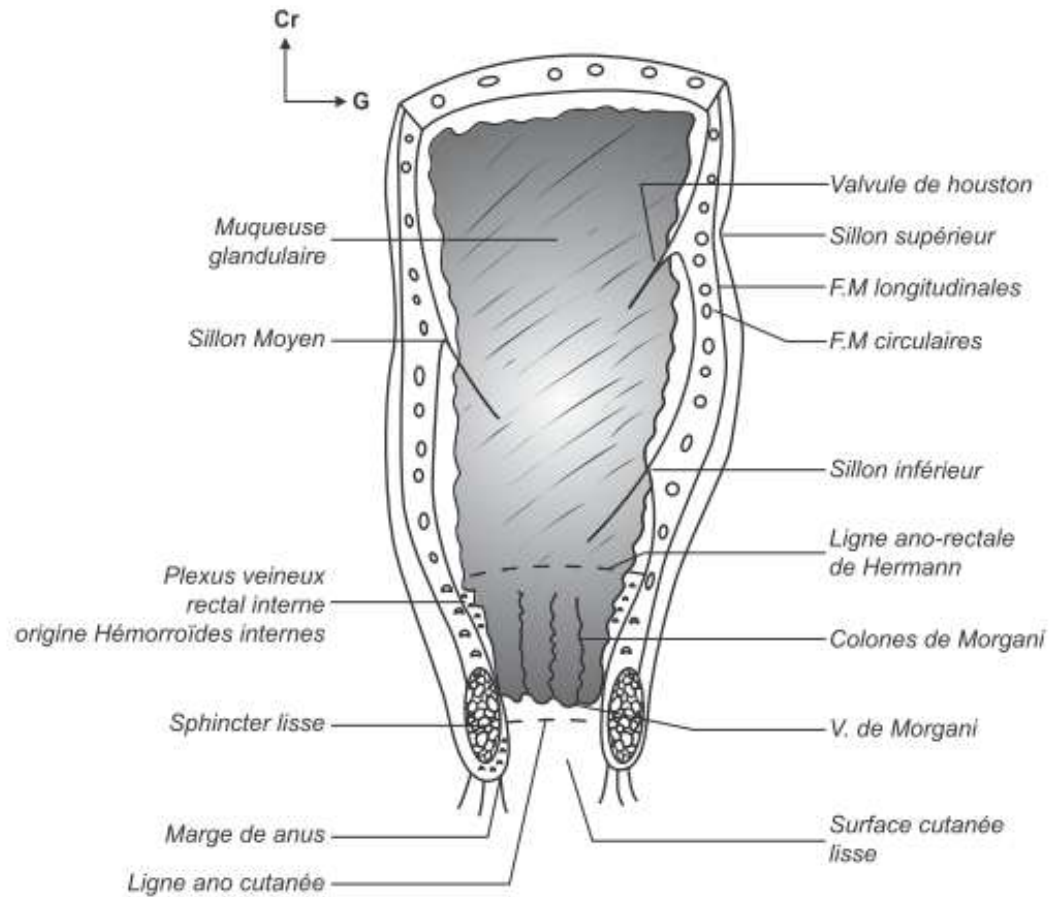












Endoscopie

Morphologie Interne du rectum

