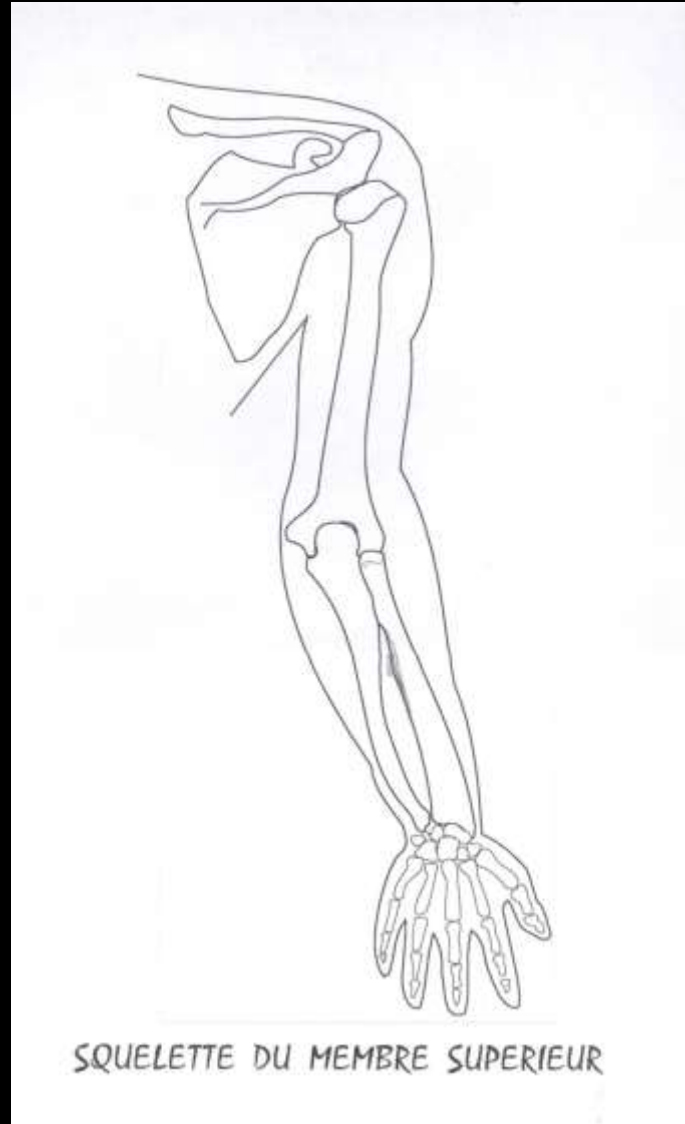


Anatomie de l'appareil locomoteur

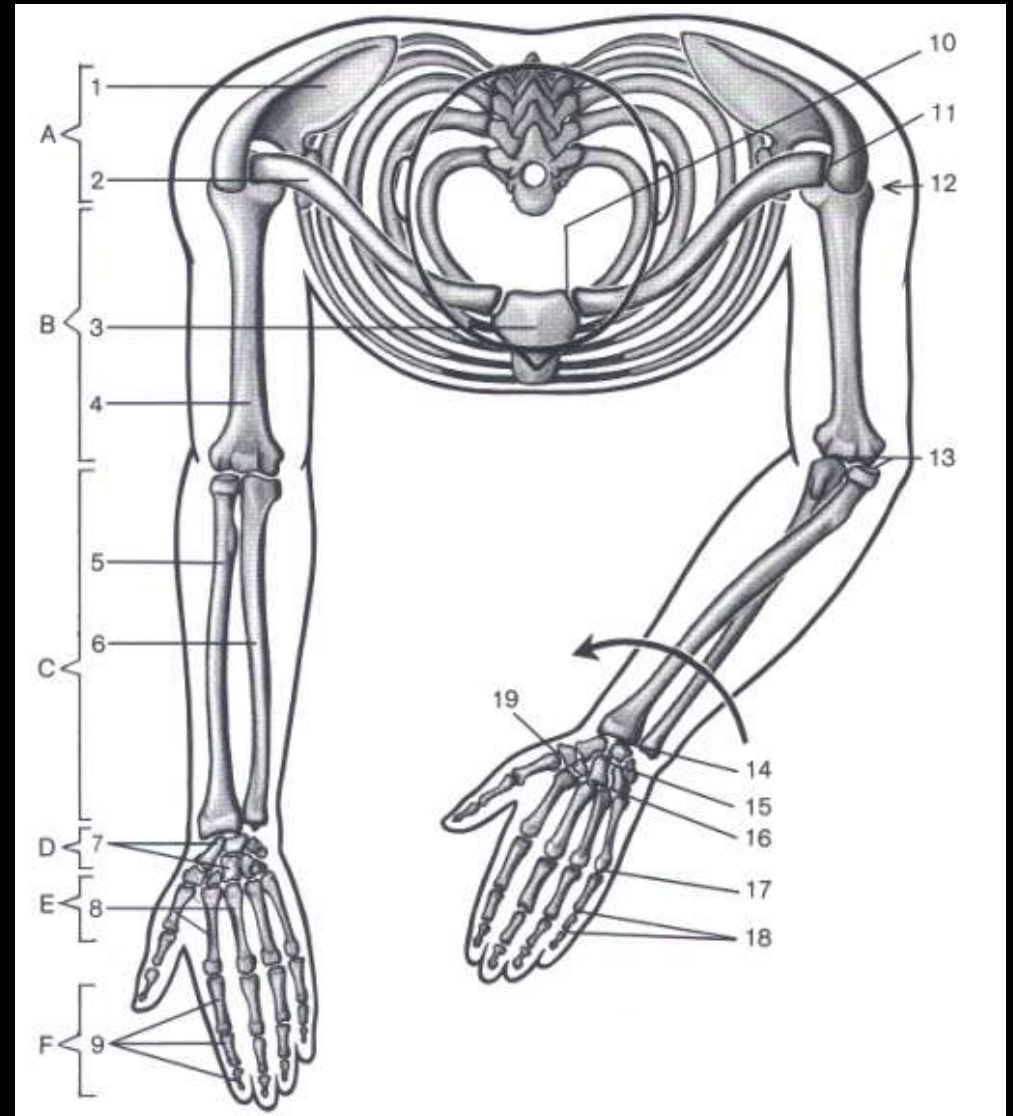
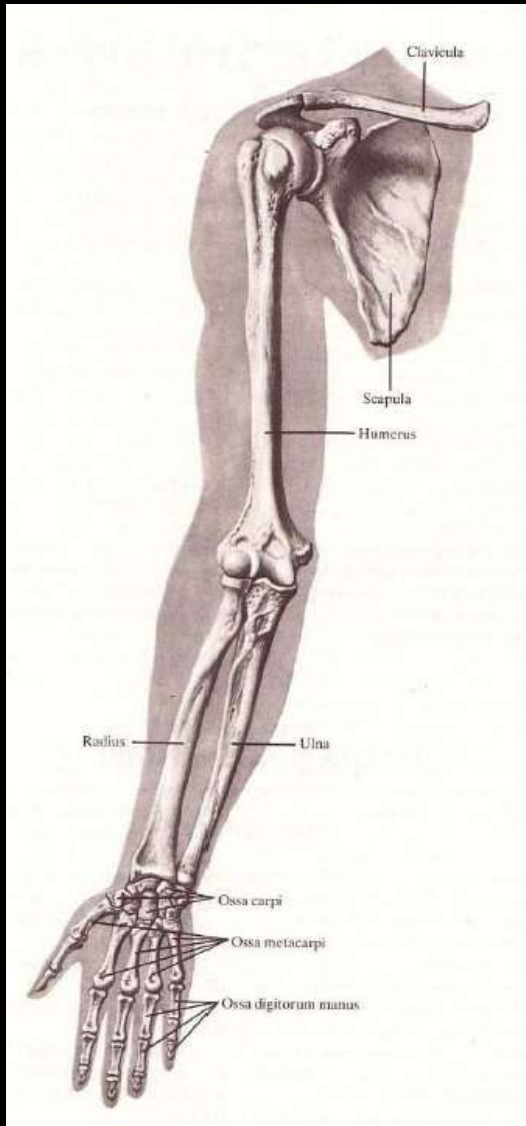
Laboratoire d'Anatomie

Faculté de Médecine et de pharmacie de Marrakech

Ostéo – arthrologie du membre supérieur



Organisation générale du squelette du membre supérieur



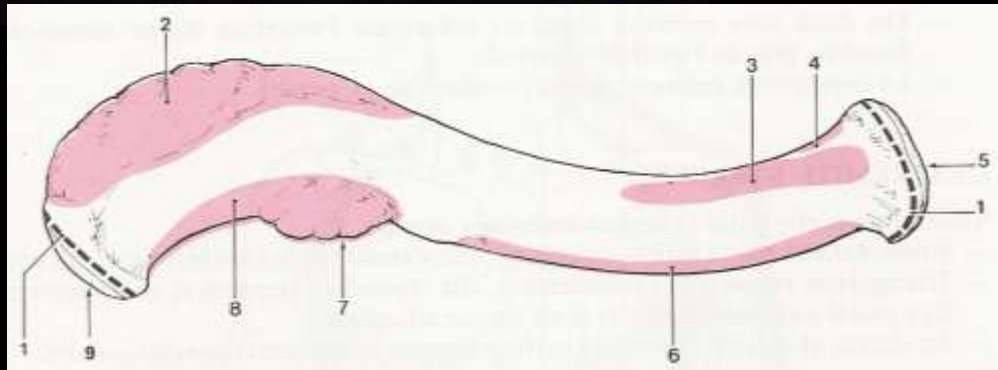
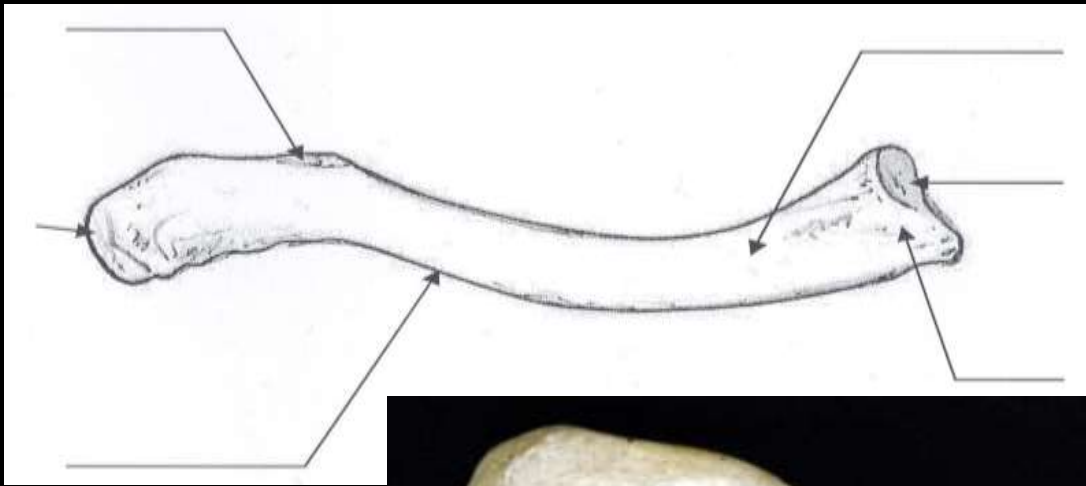
1^{ère} Séance:

Clavicule, Scapula, Humérus,
articulation de l'épaule





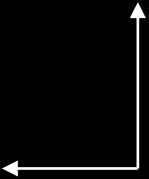
La clavicule

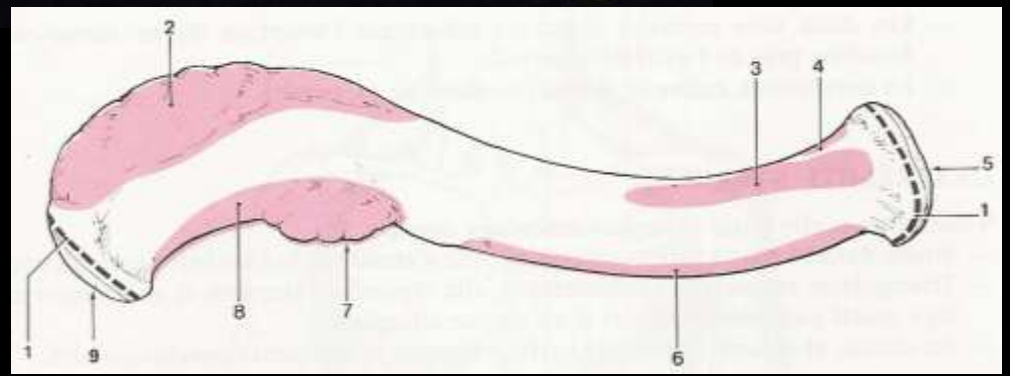
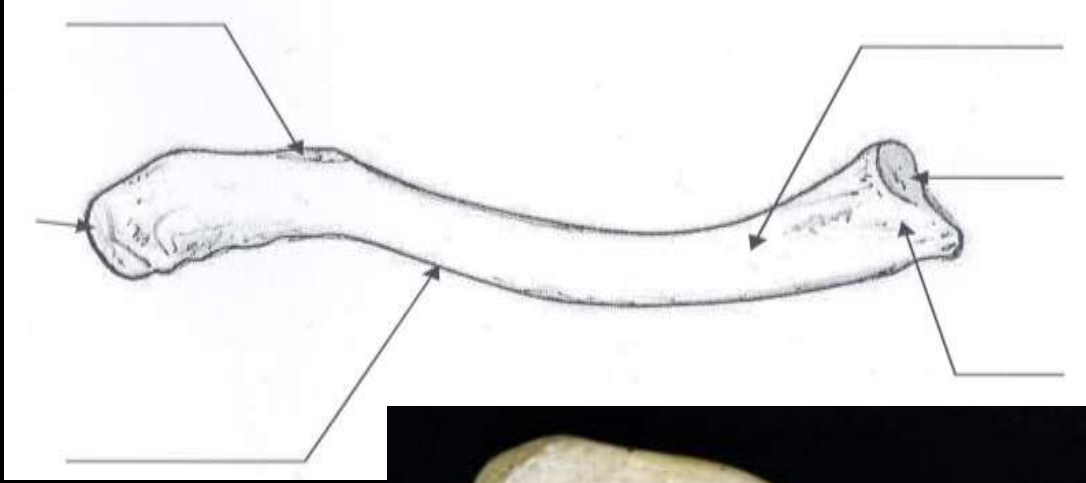


POSTÉRIEUR

LATERAL

Clavicule (Face supérieure)



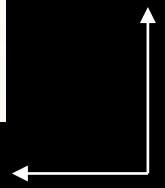


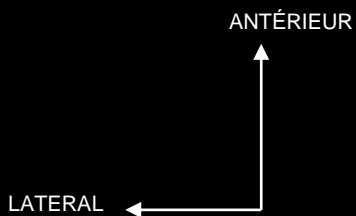
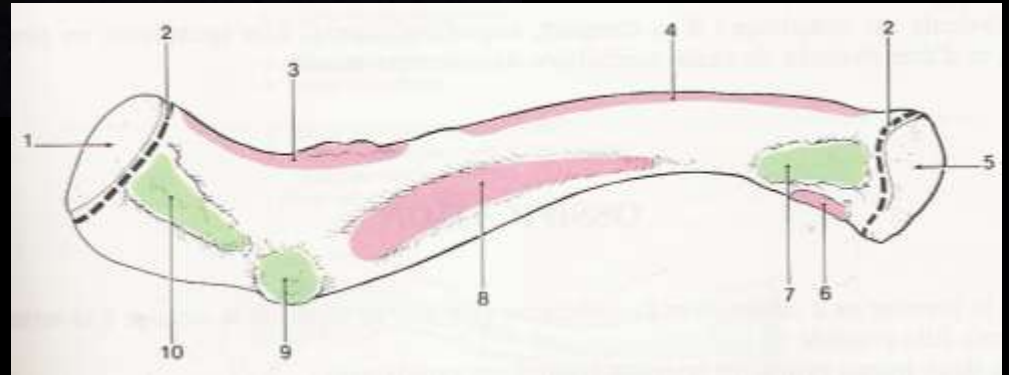
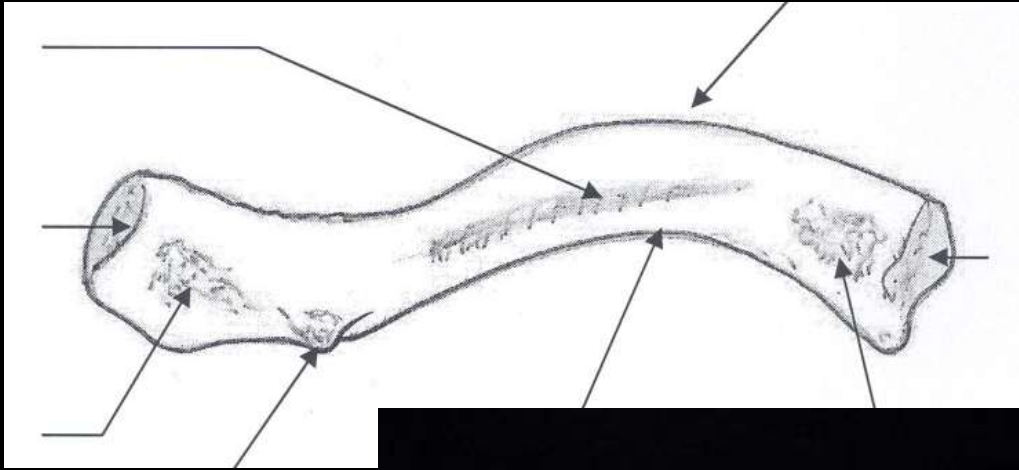
- | | | |
|-----------------------------------------|----------------------------------|-----------------------------------|
| 1 - insertion de la capsule articulaire | 4 - m. sterno-cléido-hyoïdien | 7 - tubercule deltoïde |
| 2 - m. trapèze | 5 - surface articulaire sternale | 8 - m. deltoïde |
| 3 - m. sterno-cléido-mastoïdien | 6 - m. grand pectoral | 9 - surface articulaire acromiale |

Clavicule (Face supérieure)

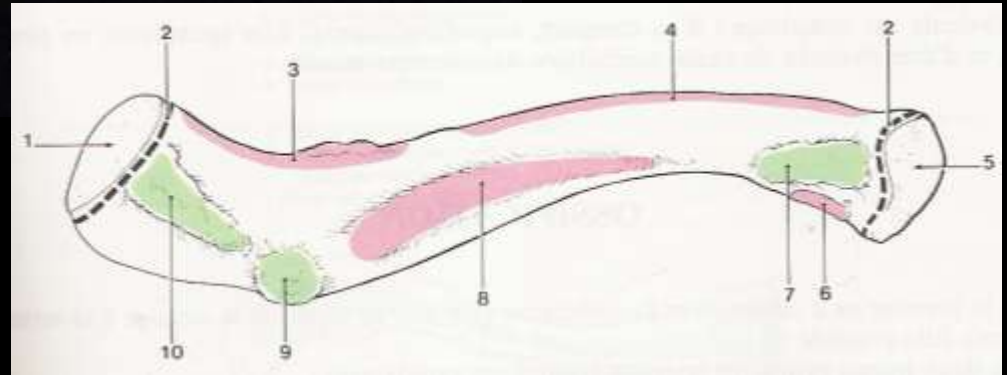
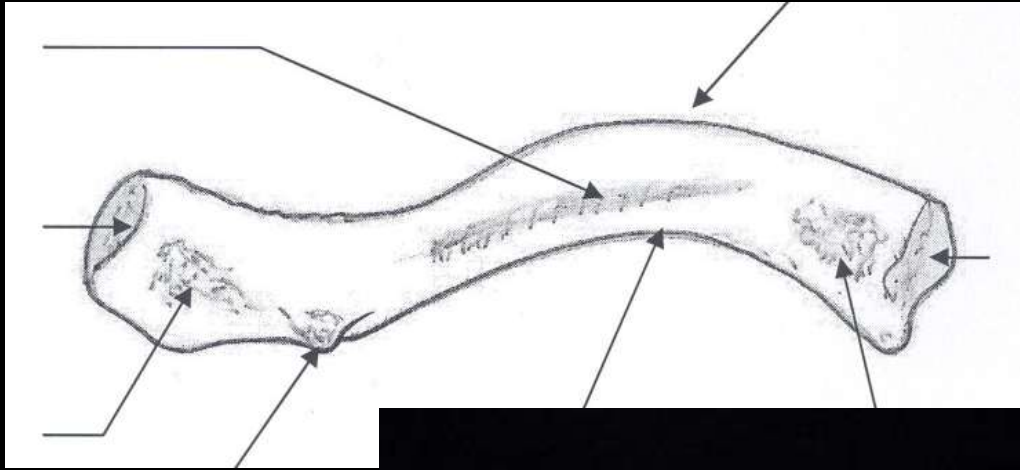
POSTÉRIEUR

LATERAL





Clavicule (Face inférieure)

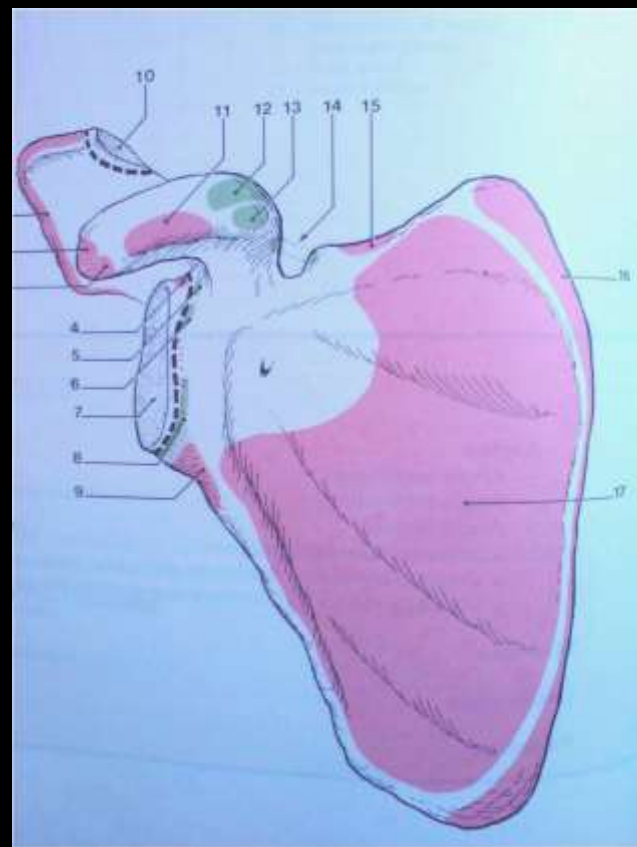
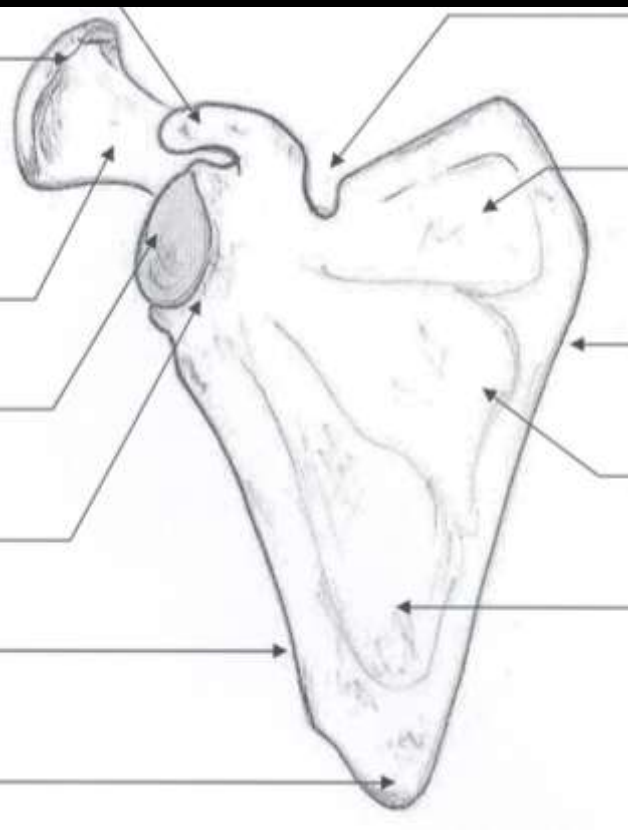


- | | | |
|-----------------------------------------|----------------------------------|--------------------------------|
| 1 - surface articulaire acromiale | 4 - m. grand pectoral | 8 - sillon et m. sub-claviers |
| 2 - insertion de la capsule articulaire | 5 - surface articulaire sternale | 9 - tubercule et lig. conoïdes |
| 3 - m. deltoïde | 6 - m. sterno-cleïdo-hyoïdien | 10 - ligne et lig. trapézoïdes |
| | 7 - lig. costo-claviculaire | |

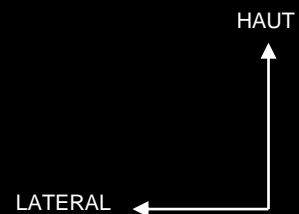
ANTÉRIEUR ↑
LATERAL ←

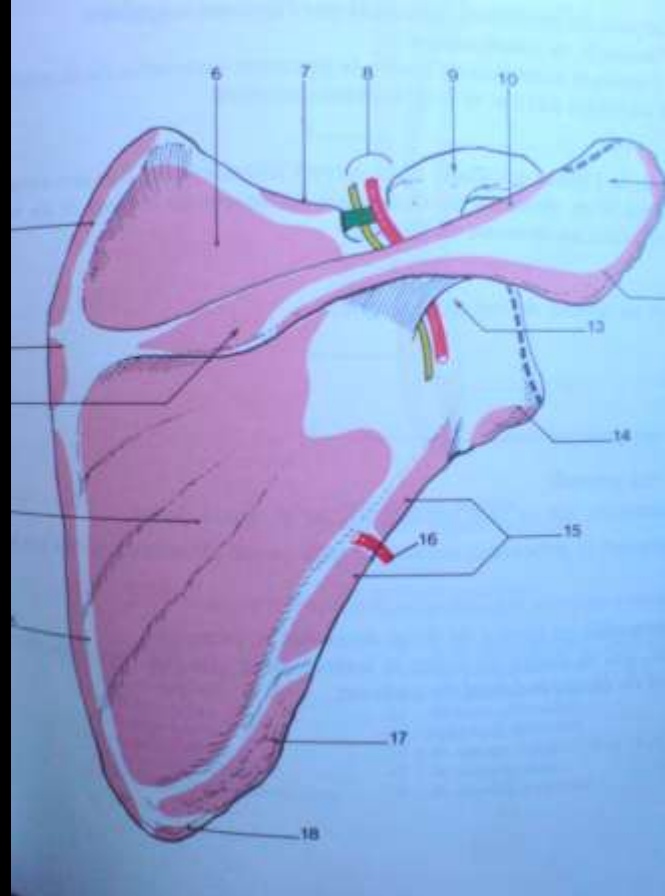
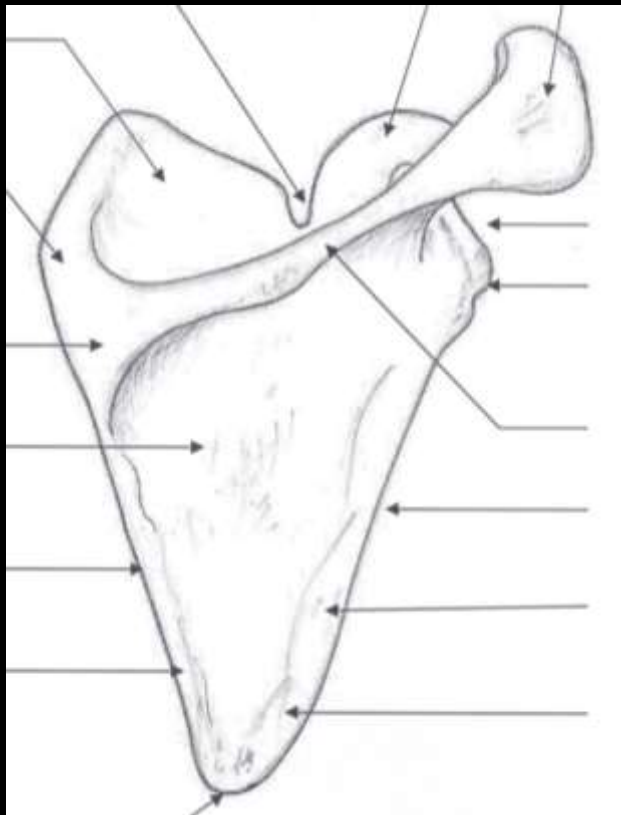
Clavicule (Face inférieure)

La Scapula

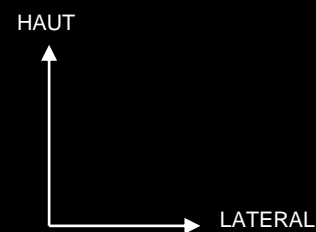


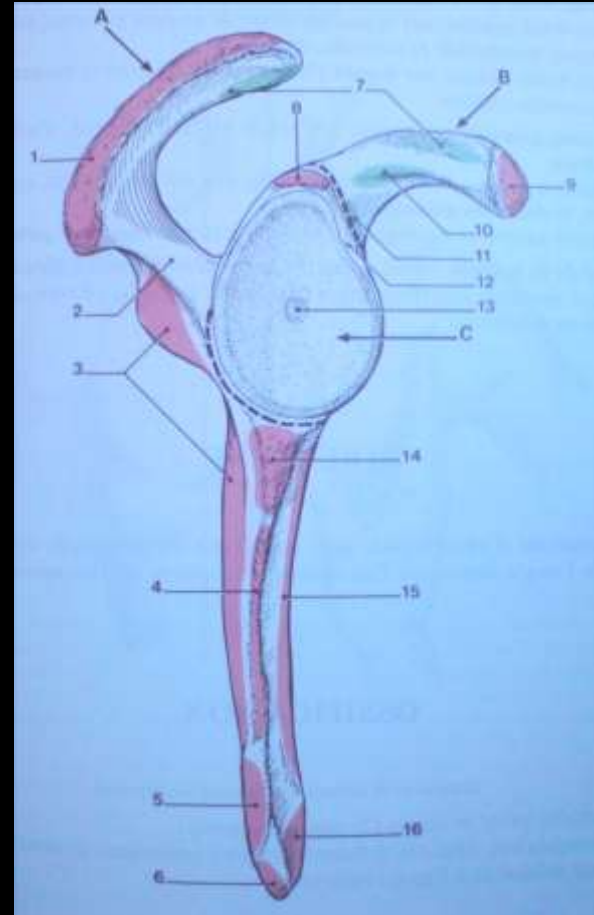
Scapula (Vue antérieure)



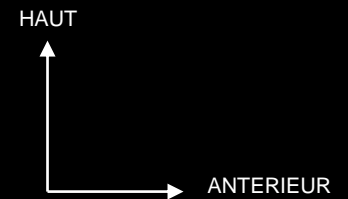


Scapula (Vue postérieure)

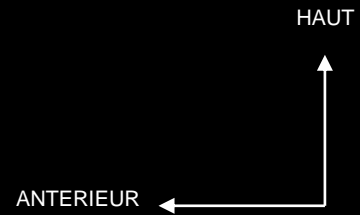


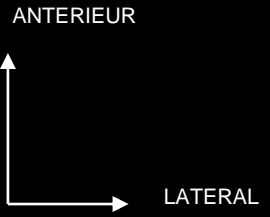


Scapula (Vue latérale)



Scapula
Vue médiale

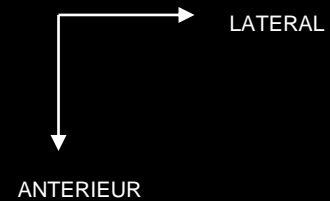




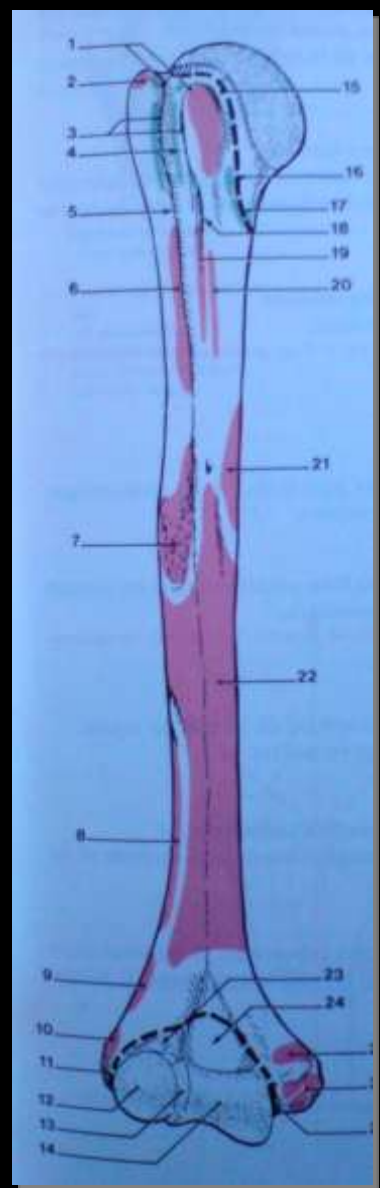
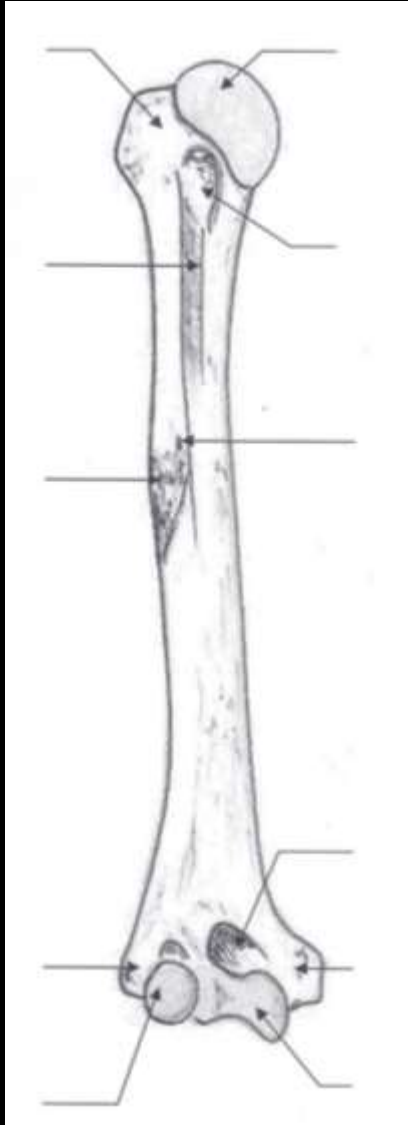
Scapula
vue supérieure



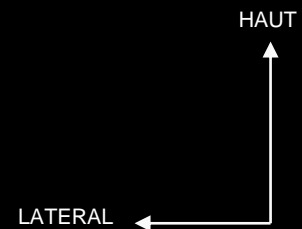
Scapula
Vue inférieure

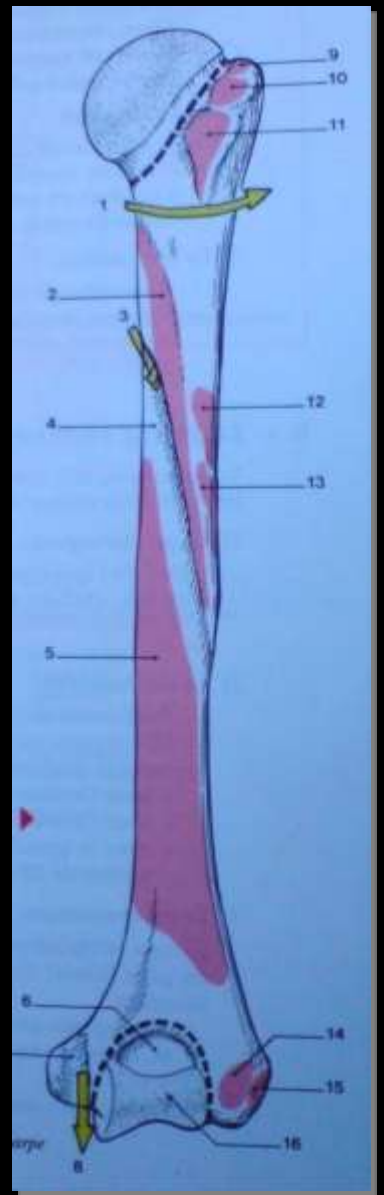
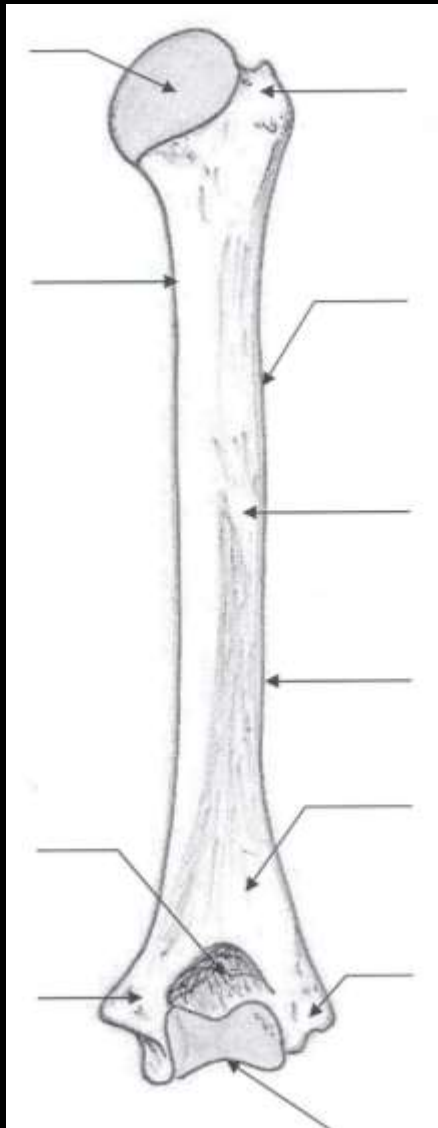


L' humérus

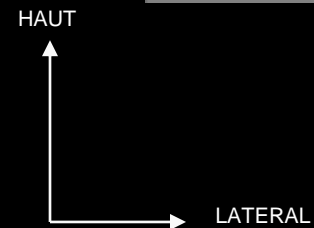


Humérus (Vue antérieure)

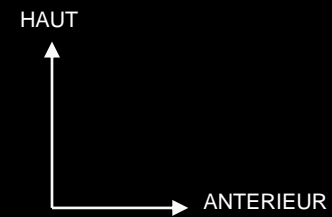




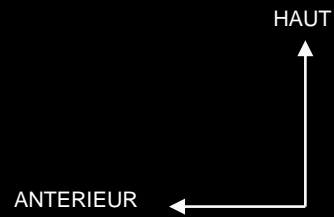
Humérus (Vue postérieure)

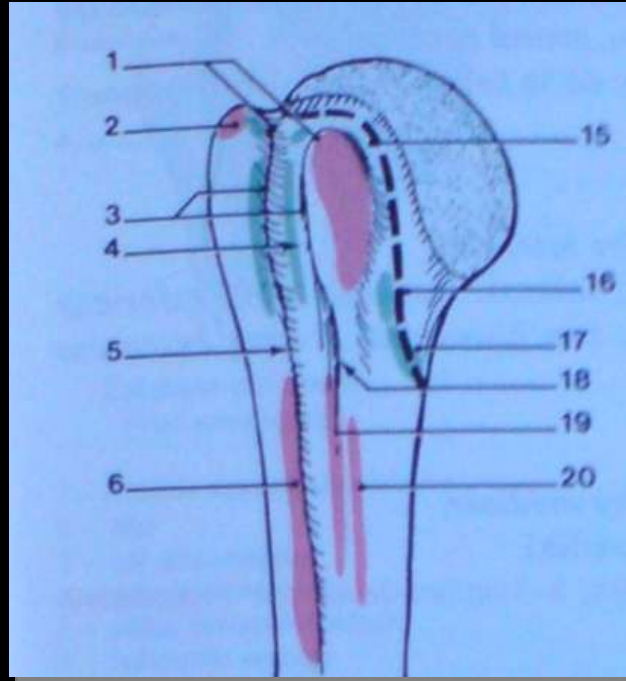
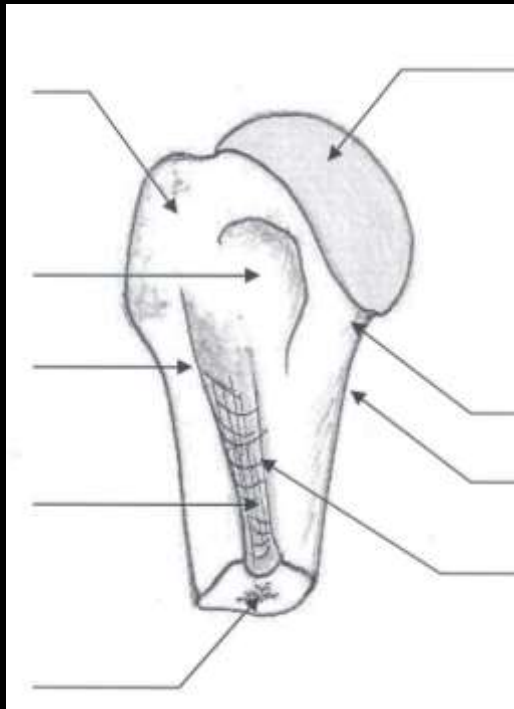


Humerus
Vue latérale



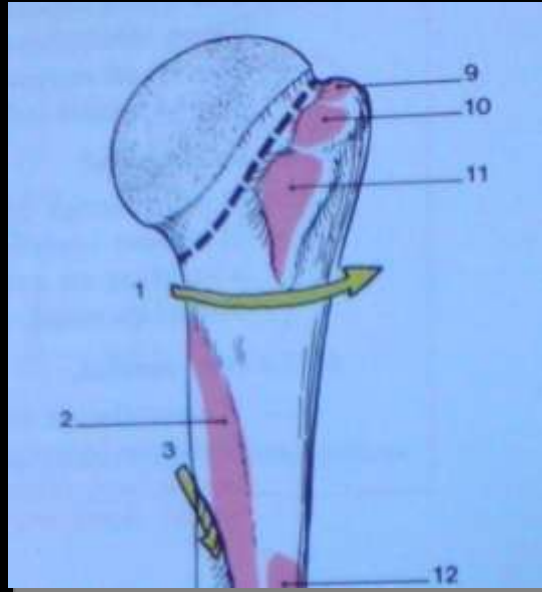
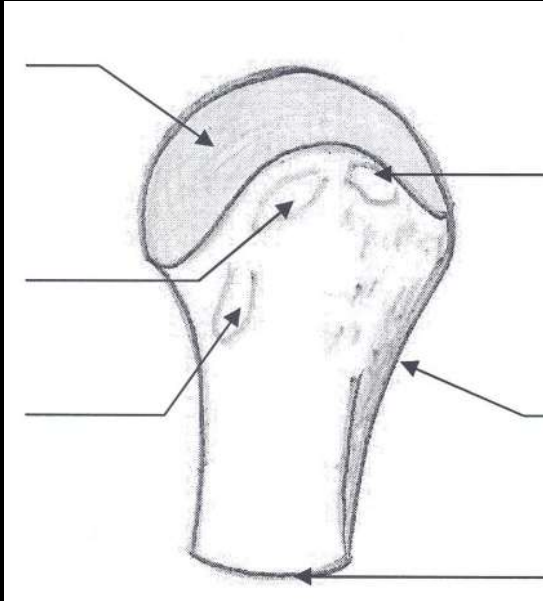
Humérus
Vue médiale





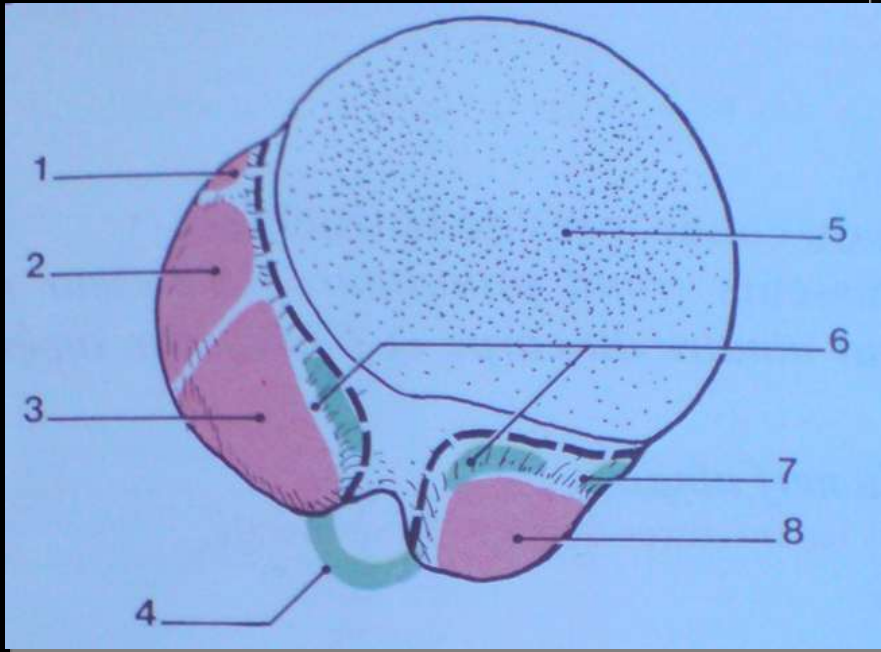
HAUT ↑
LATERAL ←

Extrémité proximale de l'humérus
(Vue antérieure)



HAUT
↑
LATERAL →

Extrémité proximale de l'humérus
(Vue postérieure)

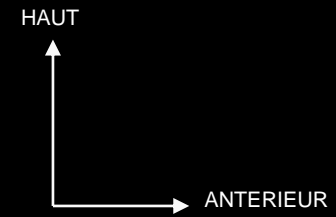


POSTÉRIEUR

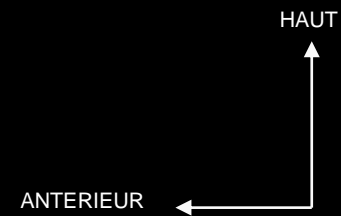
LATERAL

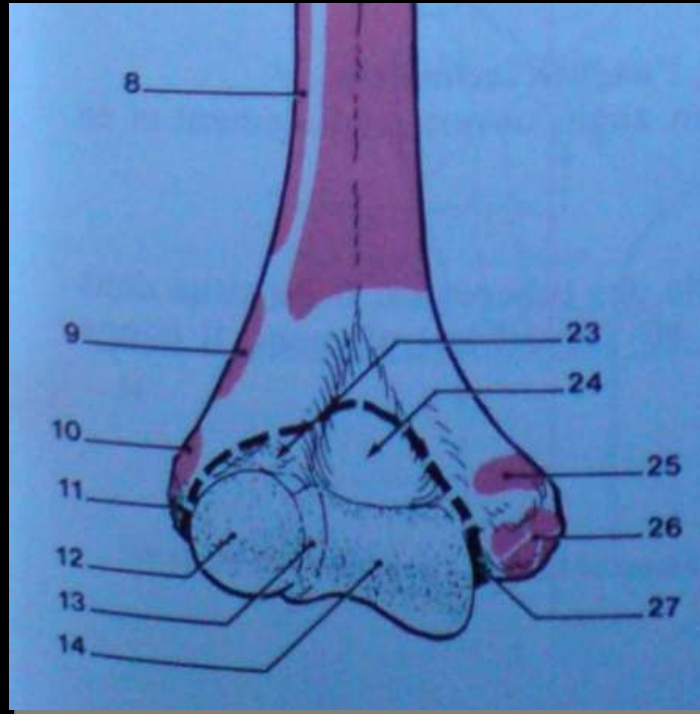
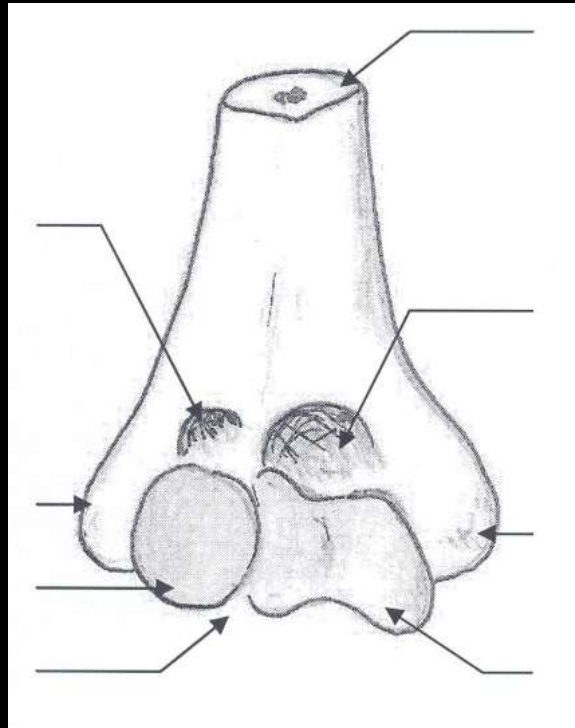
Extrémité proximale de l'humérus vue supérieure

Extrémité proximale
de l'humérus
Vue latérale

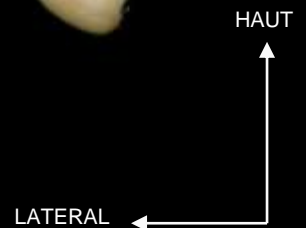


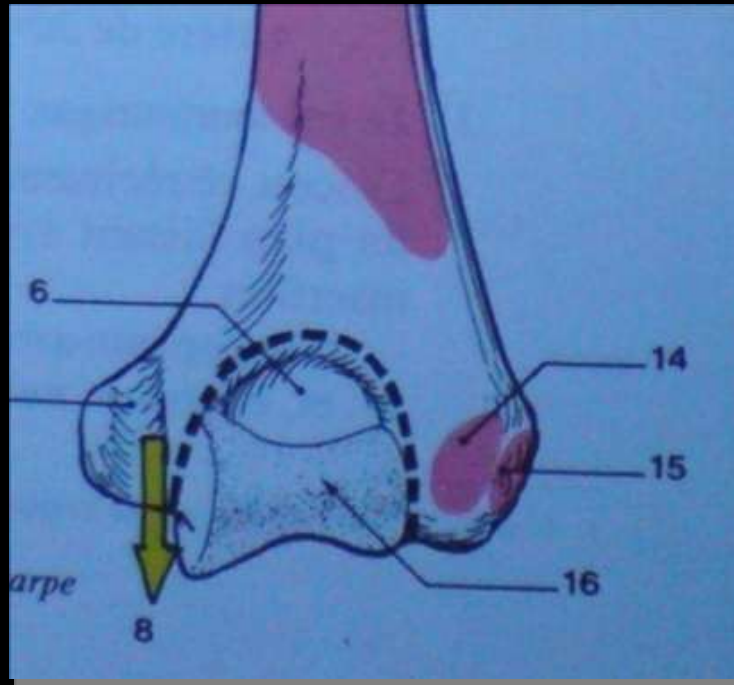
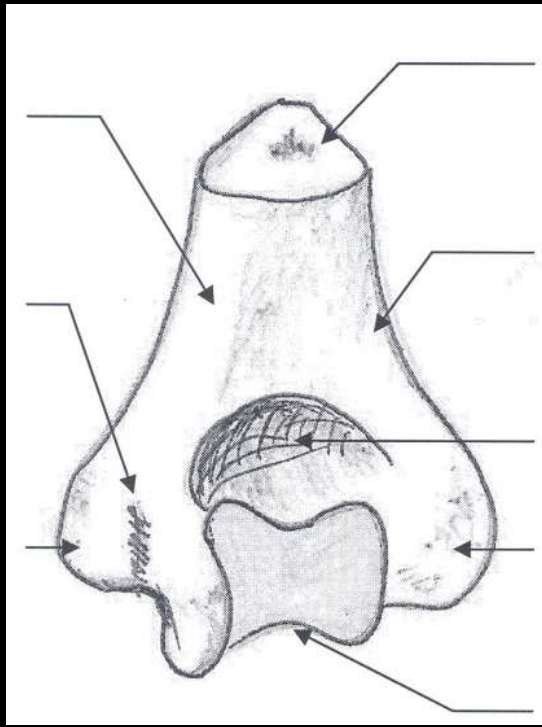
Extrémité proximale
de l'humérus
Vue médiale



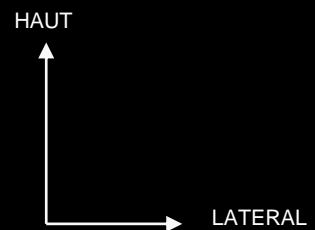


Extrémité distale de l'humérus
Vue antérieure



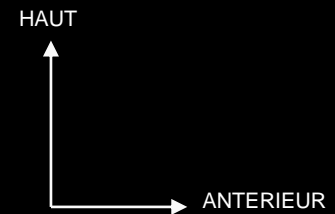


Extrémité distale de l'humérus
(Vue postérieure)

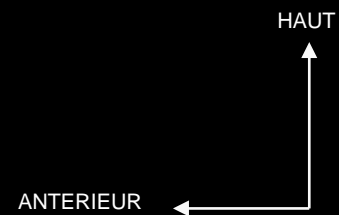




Extrémité distale
de l'humérus
Vue latérale



Extrémité distale
de l'humérus
Vue médiale





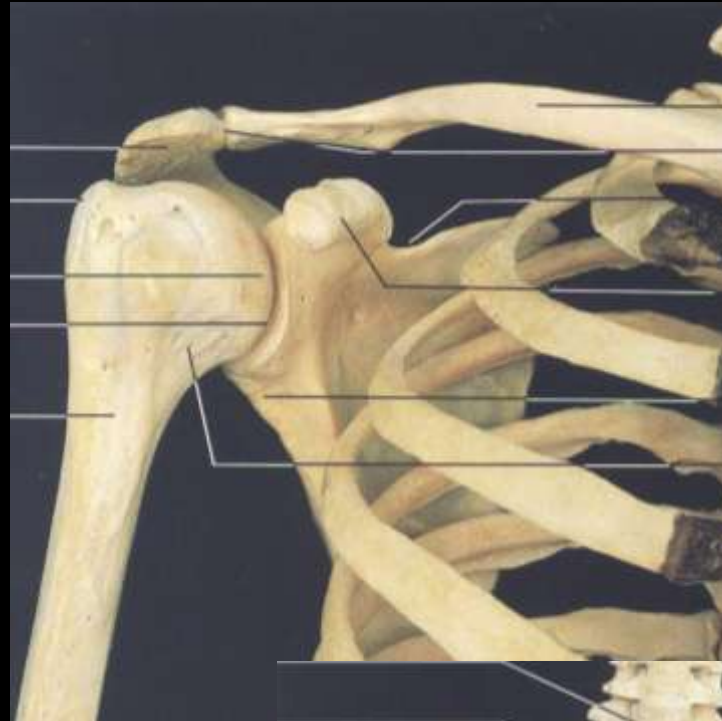
Extrémité distale de l'humérus vue inférieure

Complexe articulaire de l'épaule

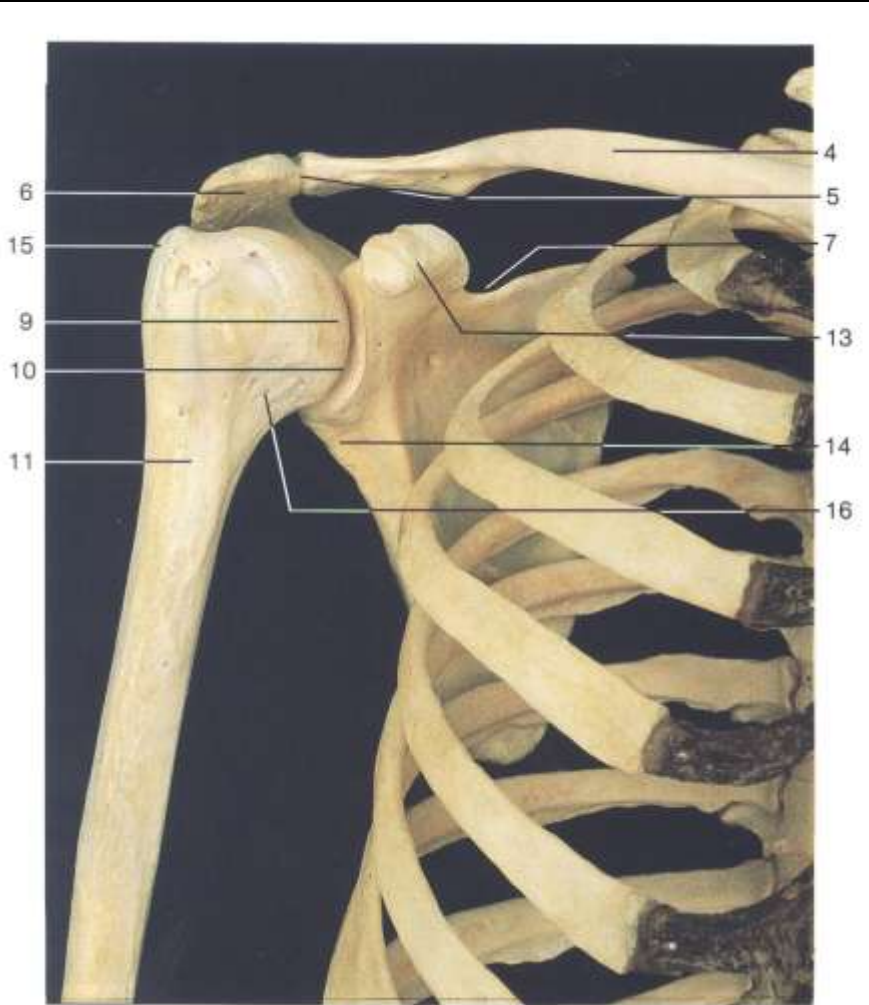
Complexe articulaire de l'épaule

- Cinq articulations:

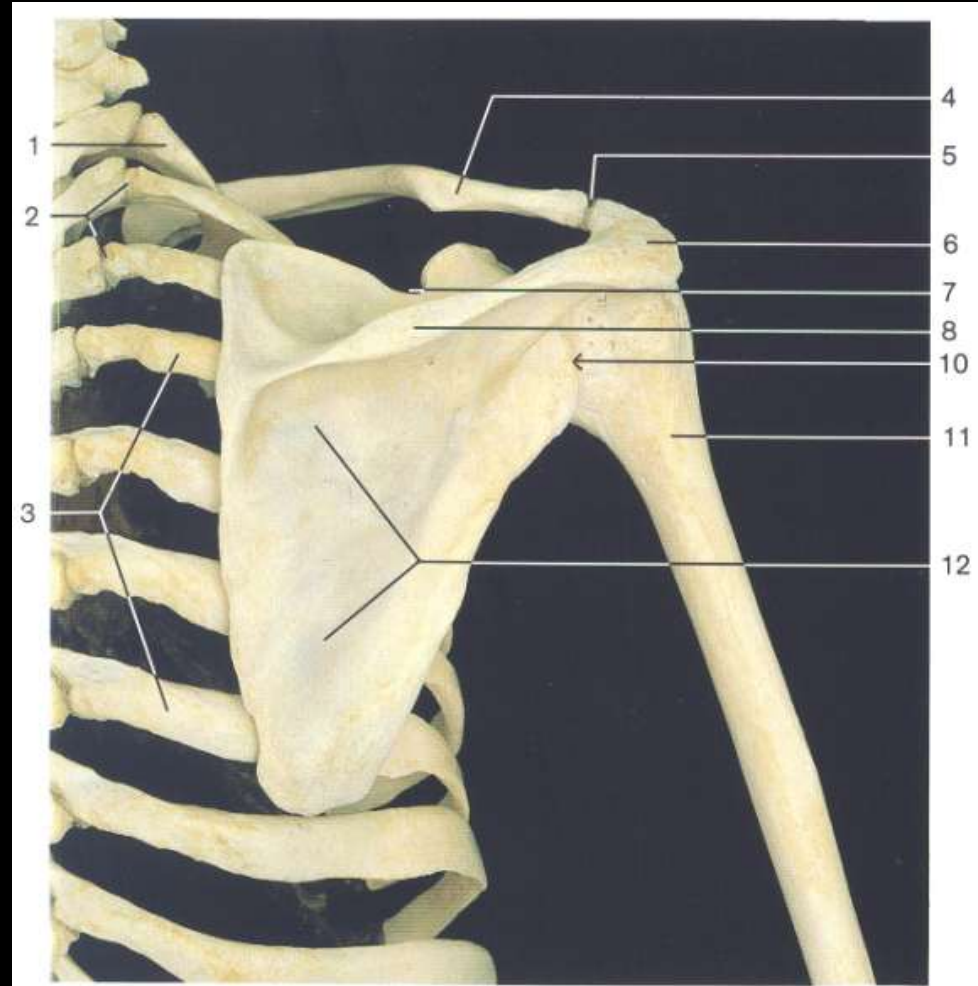
- Articulation scapulo – humérale
- Articulation acromio – clavulaire
- Articulation stérno – costo – clavulaire
- Deux espaces de glissement:
 - Espace scapulo – thoracique
 - Espace sous acromial



Articulation Scapulo – humérale

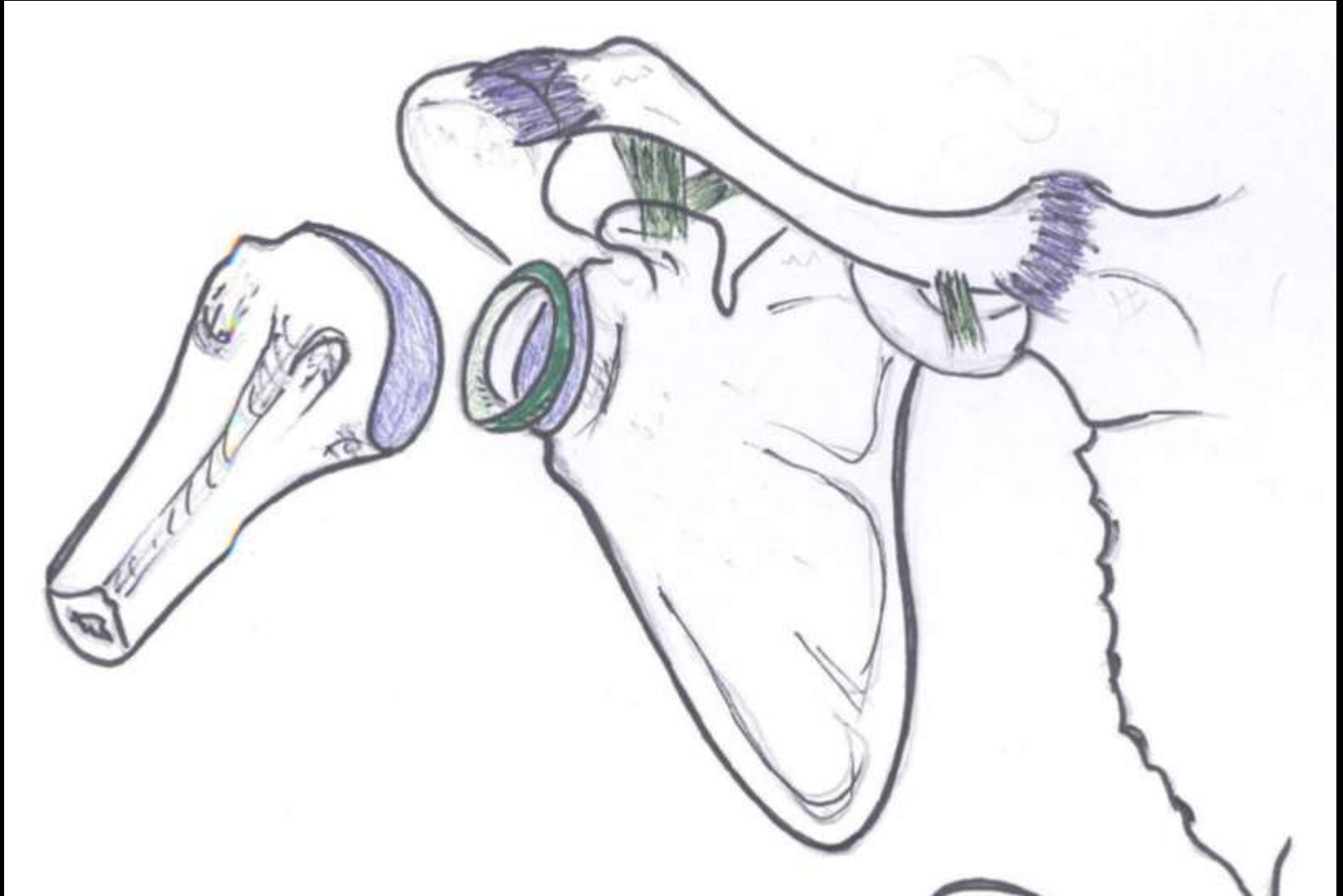


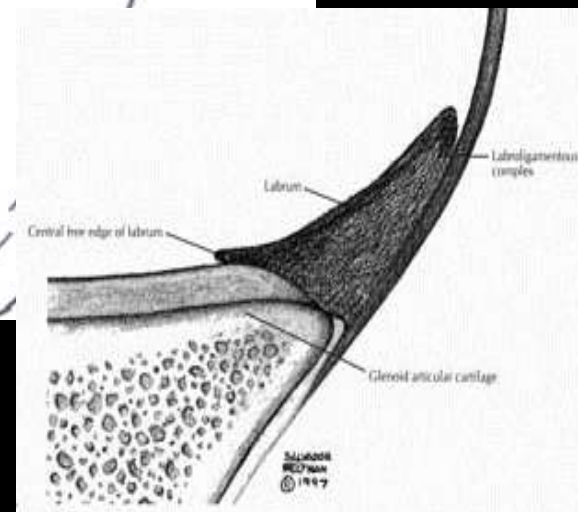
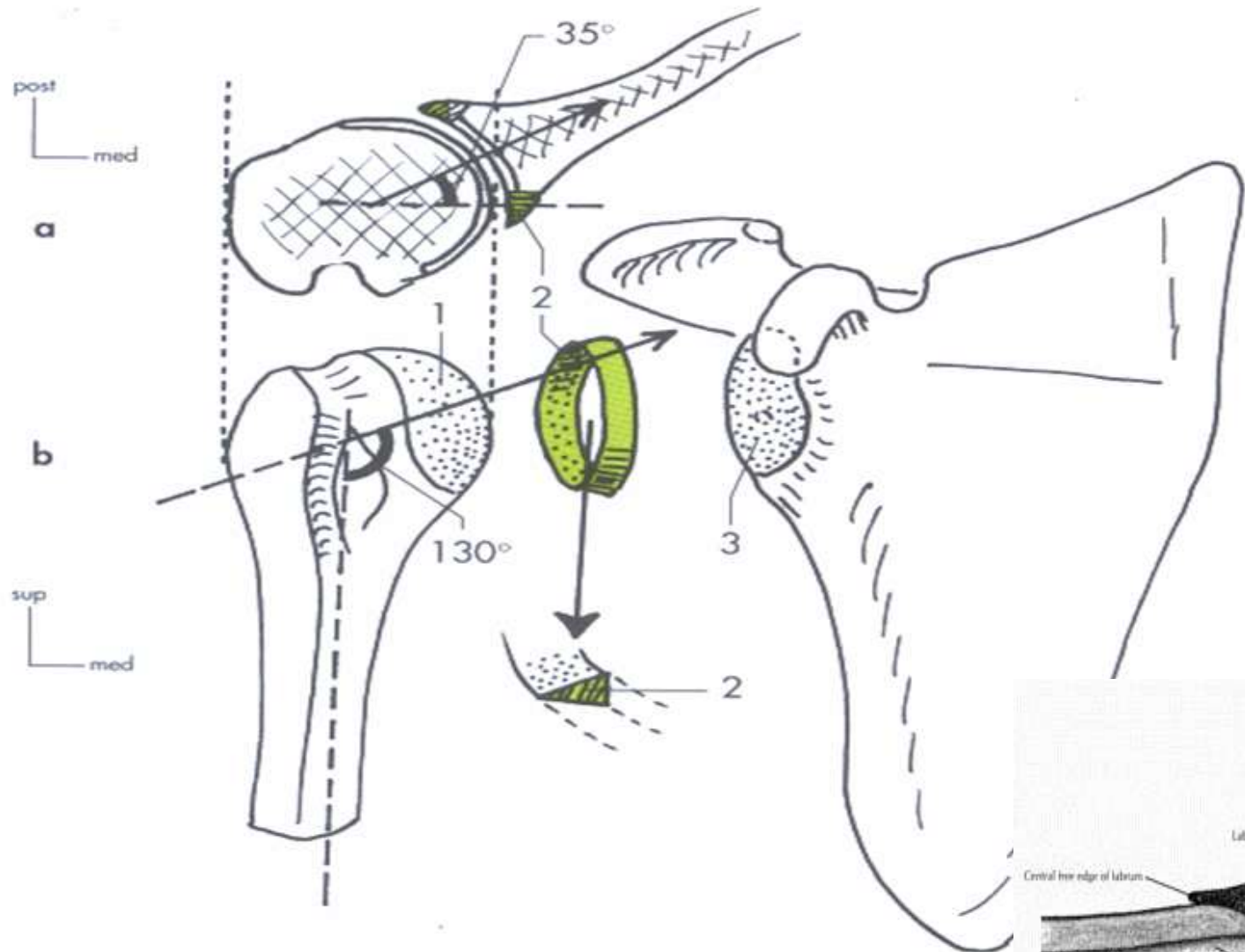
Os de l'articulation de l'épaule (vue ventrale).



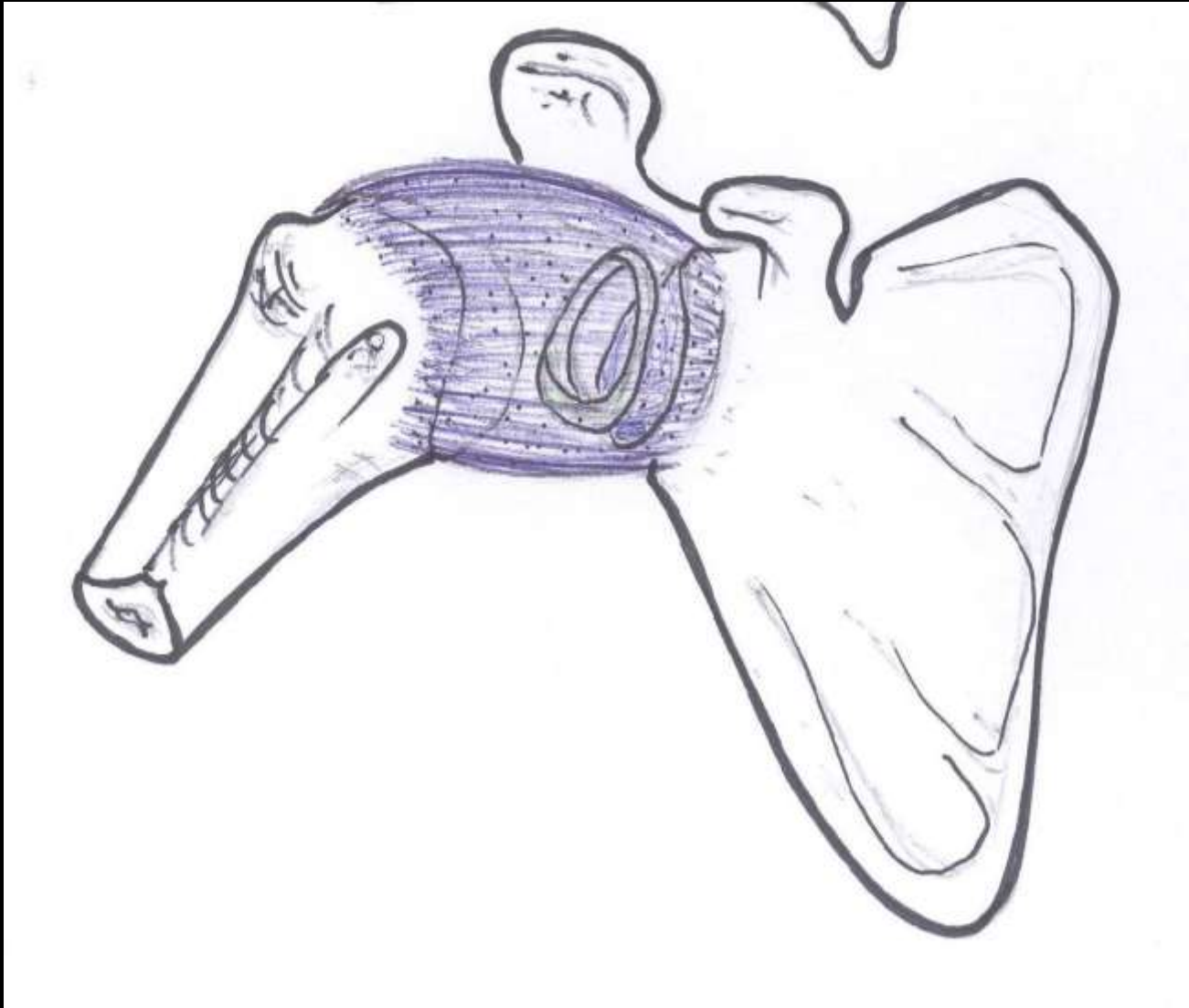
Os de l'articulation de l'épaule (vue dorsale).

Surfaces articulaires



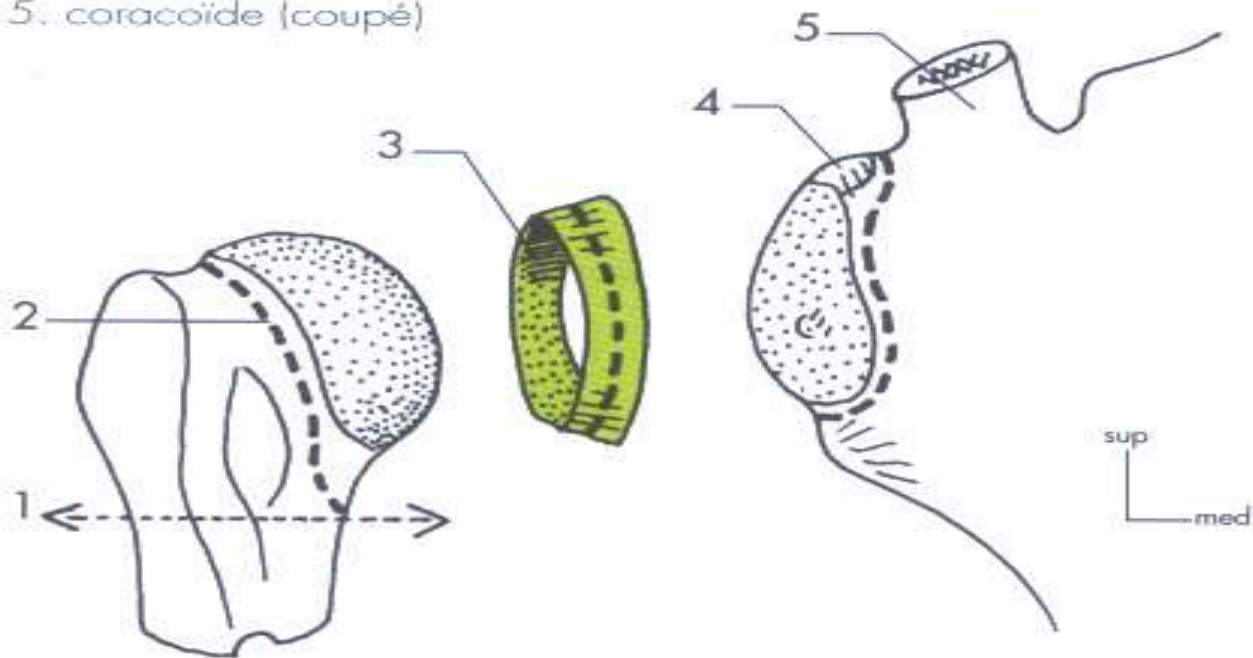


Capsule articulaire

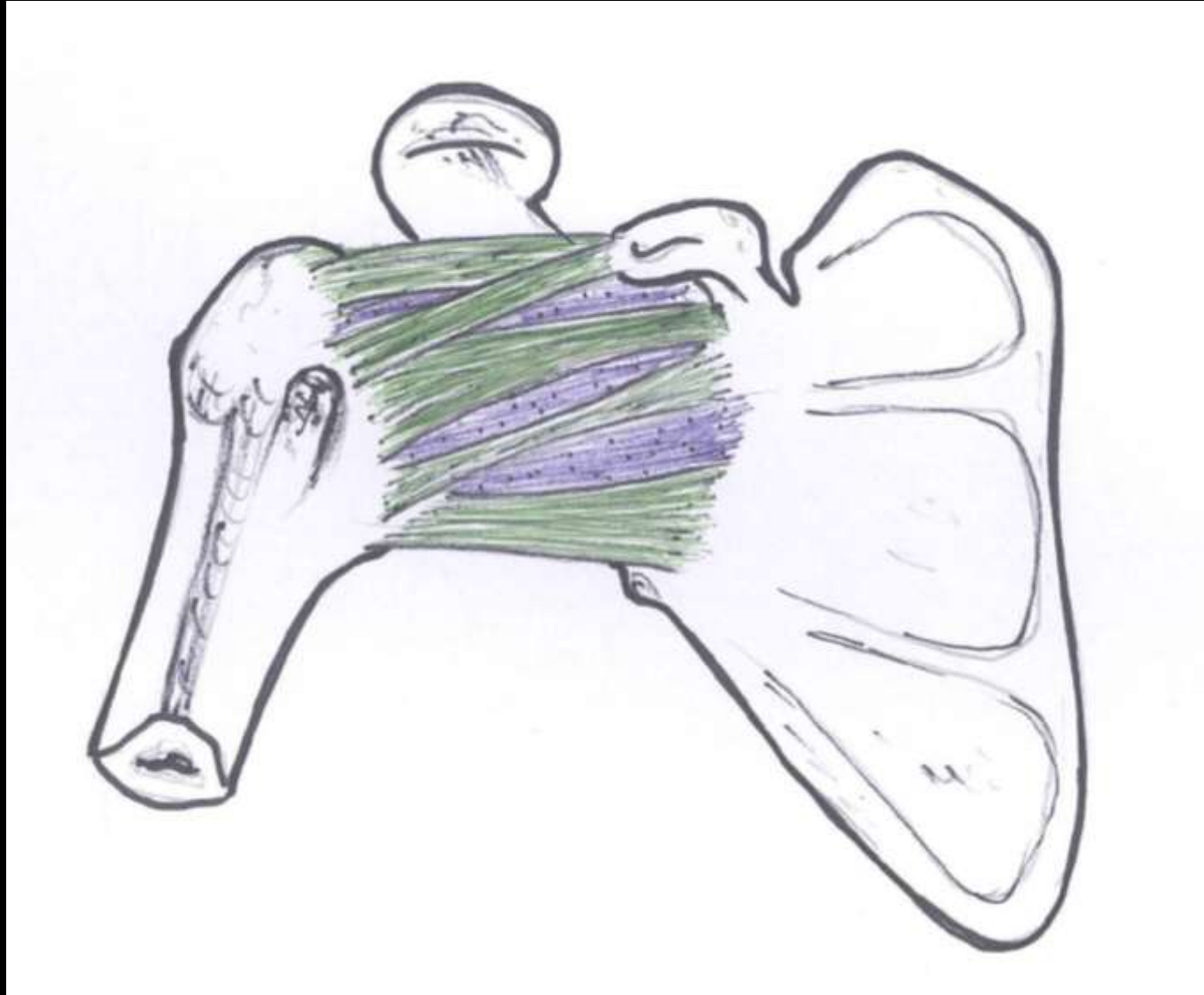


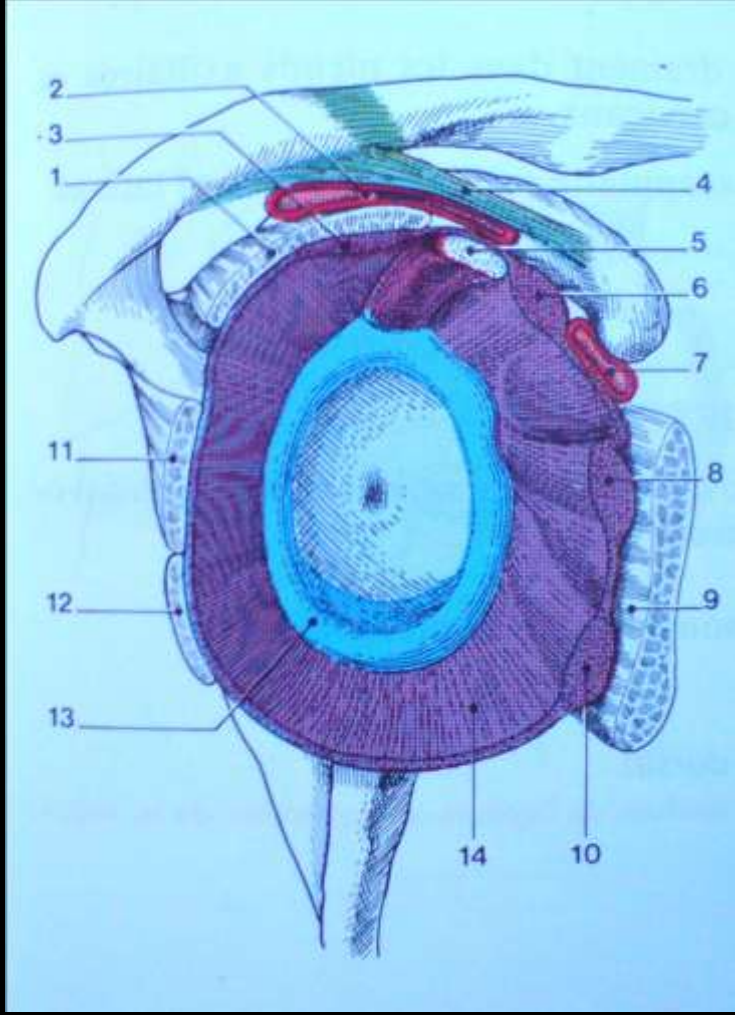
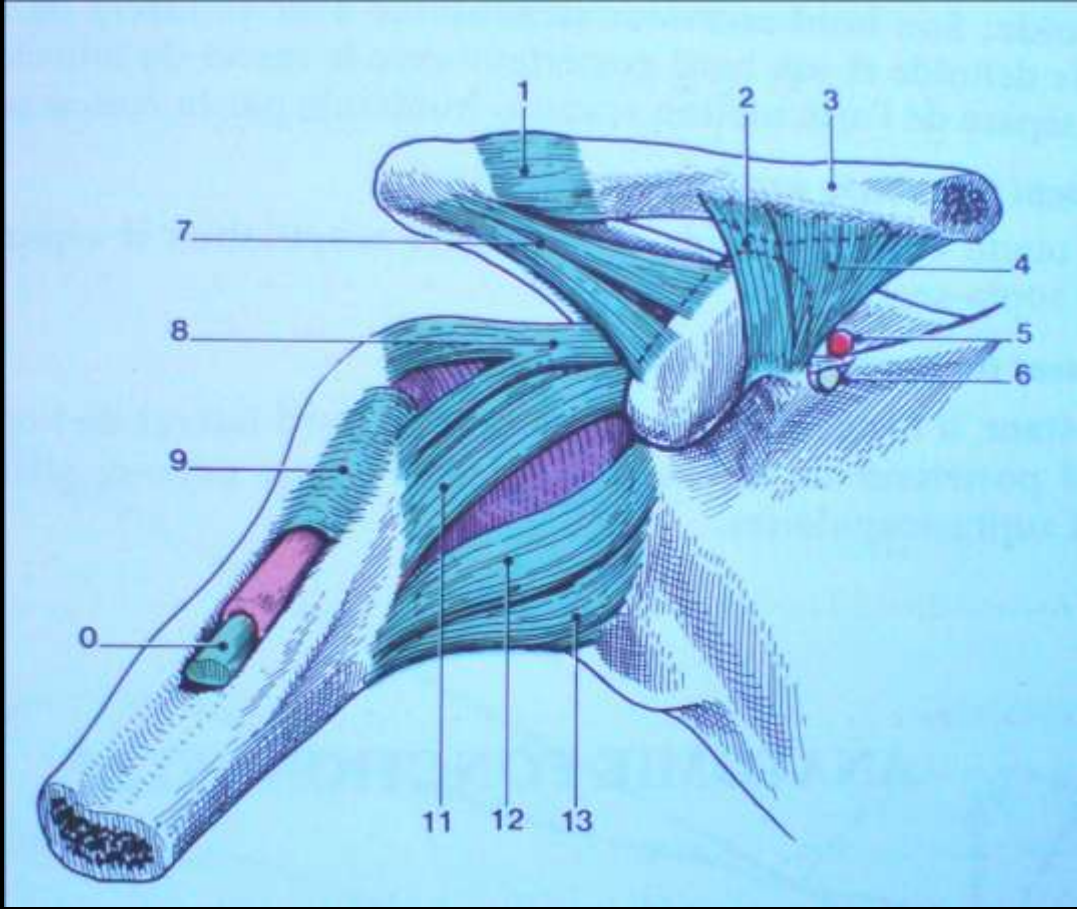
Insertions capsulaires.

1. col chirurgical
2. col anatomique et capsule
3. labrum
4. tubercule supra-glénôïdien et long biceps
5. coracoïde (coupé)



Moyens d'union passifs (Ligaments)



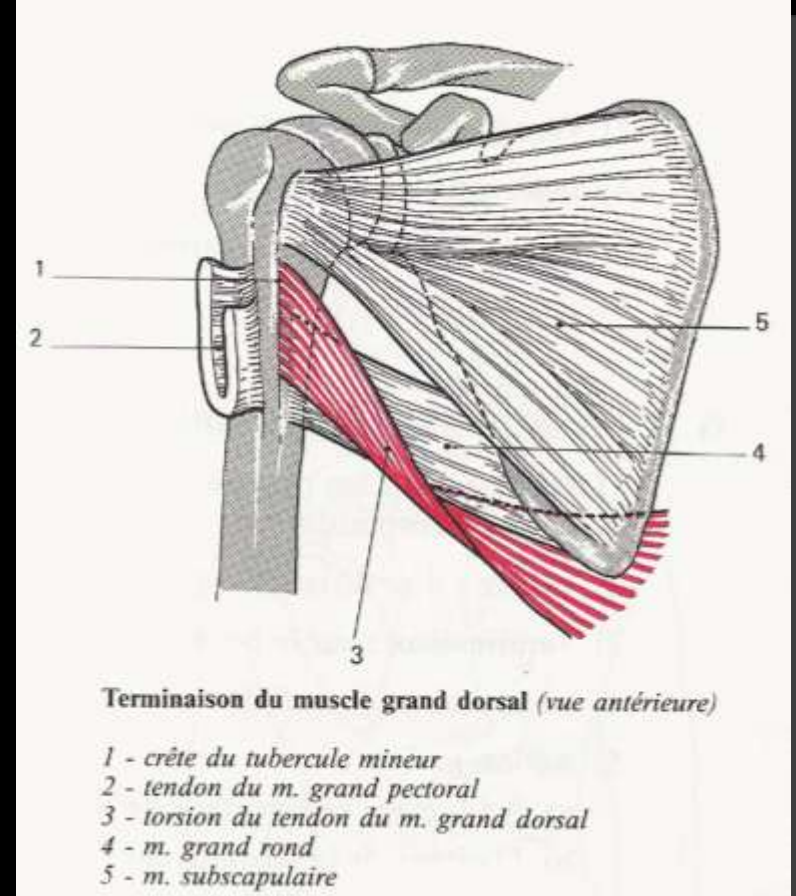
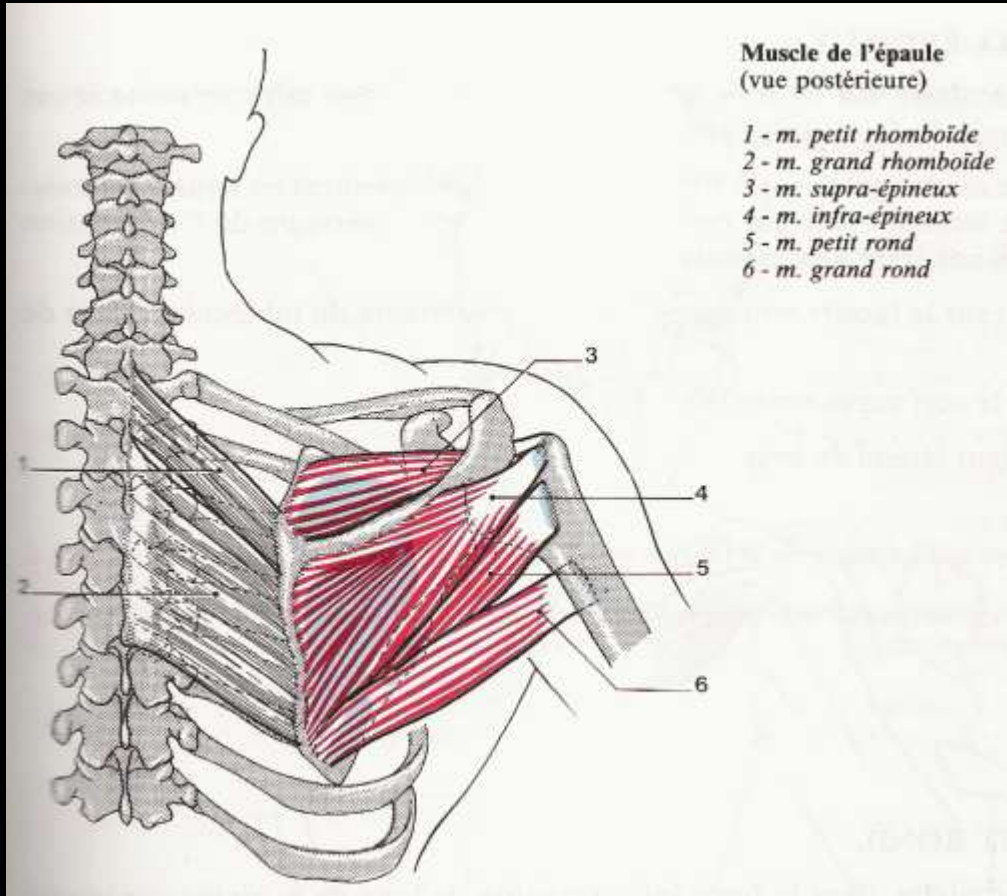






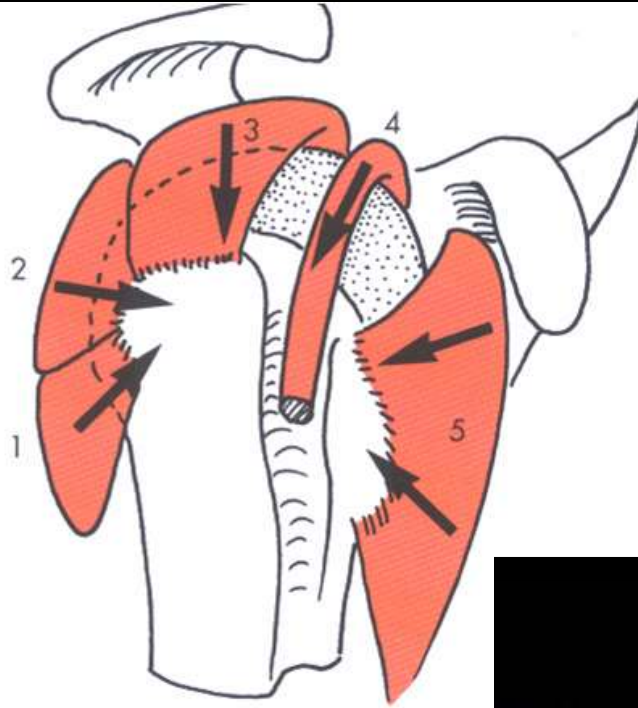


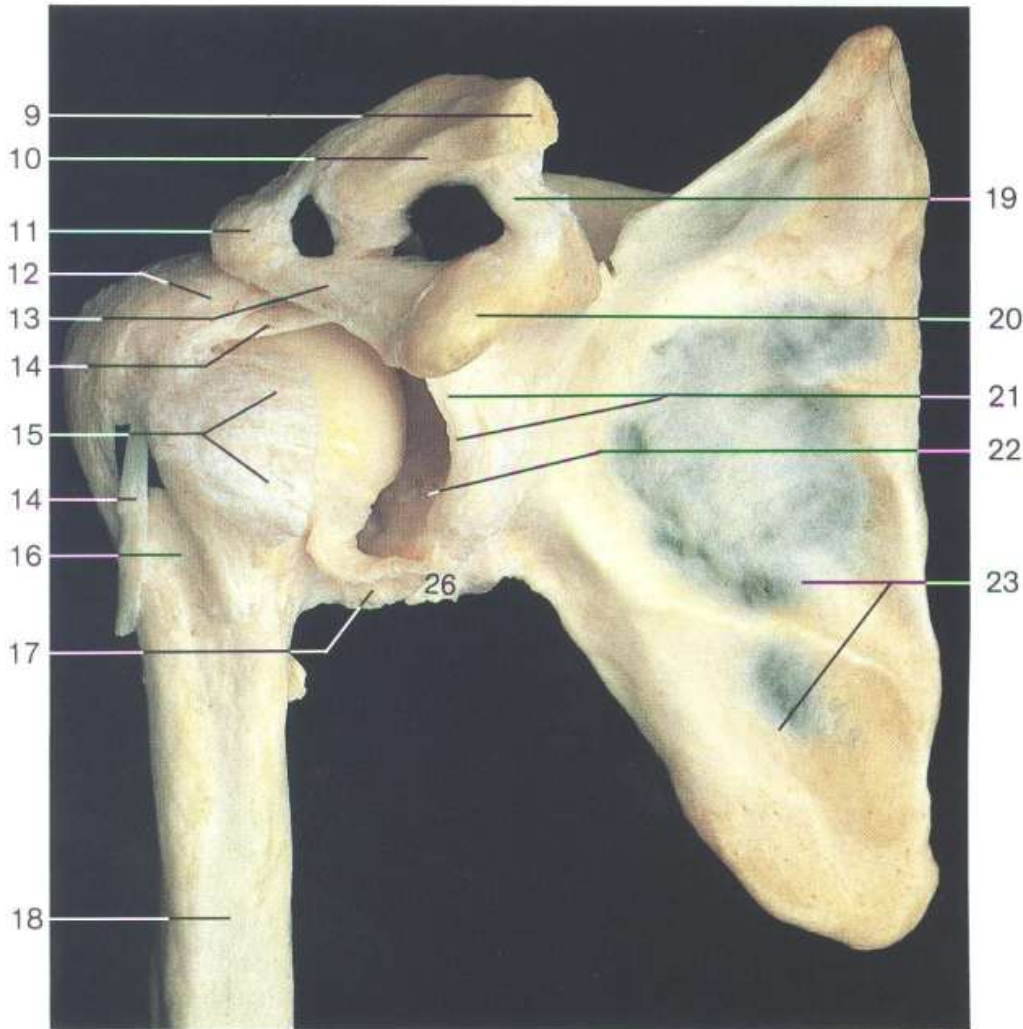
Moyens d'union actifs (Les muscles)



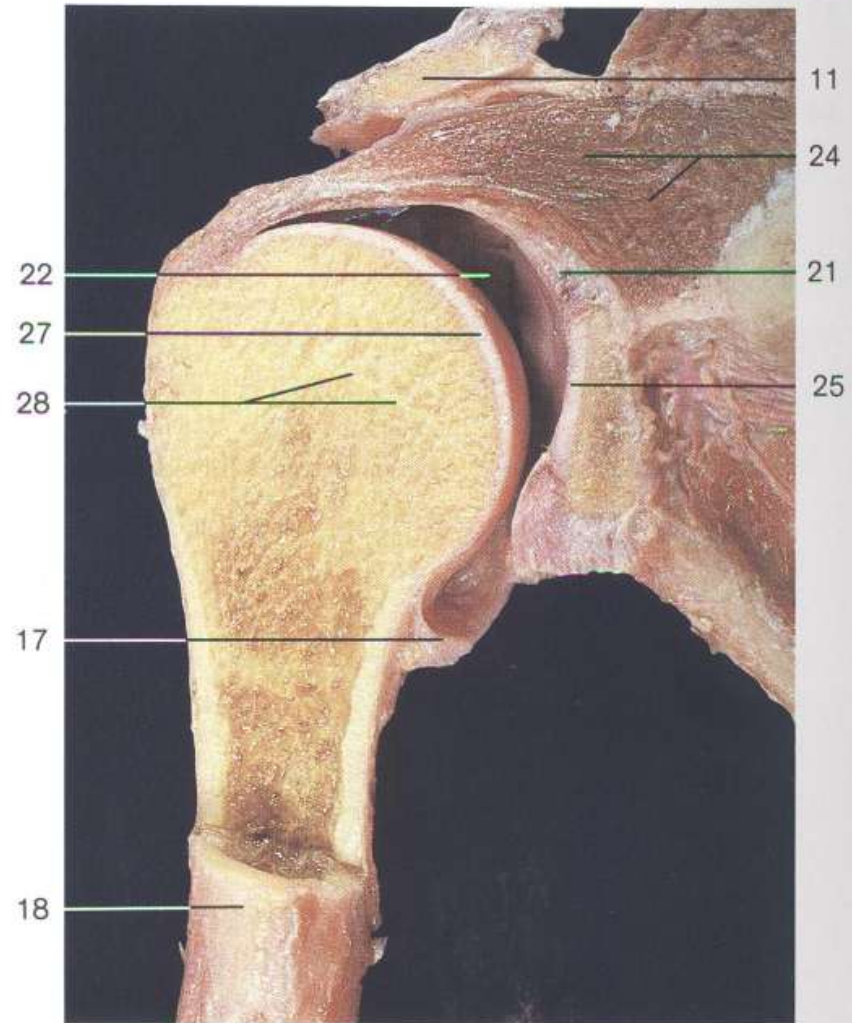
Éléments stabilisateurs actifs.

1. petit rond
2. infra-épineux
3. supra-épineux
4. tendon du long biceps
5. subscapulaire



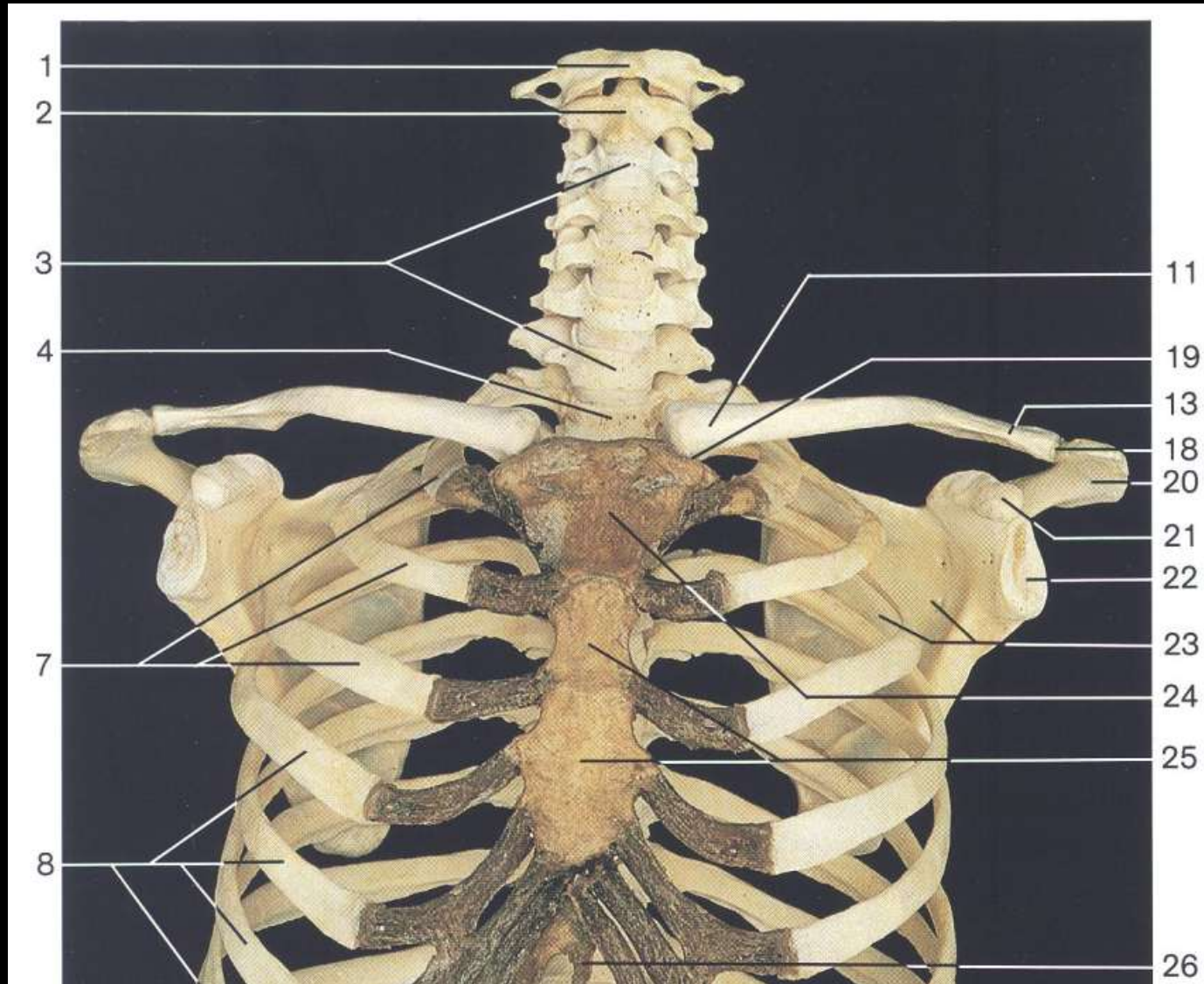


Articulation de l'épaule droite. La partie antérieure de la capsule articulaire a été réséquée et la tête de l'humérus a été légèrement tournée en dehors pour exposer la cavité articulaire.

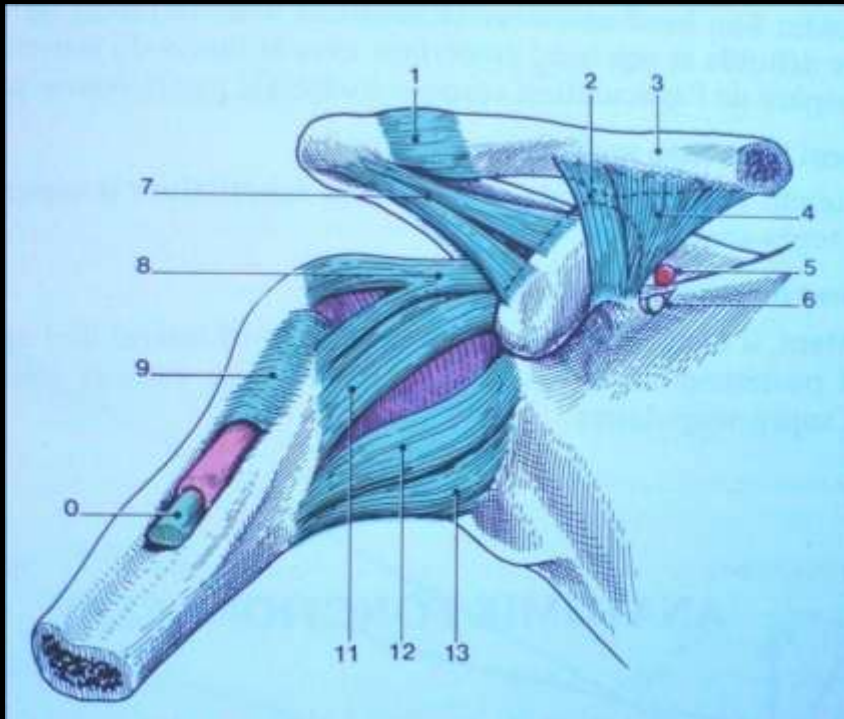


Coupe coronale de l'articulation de l'épaule droite (vue antérieure).

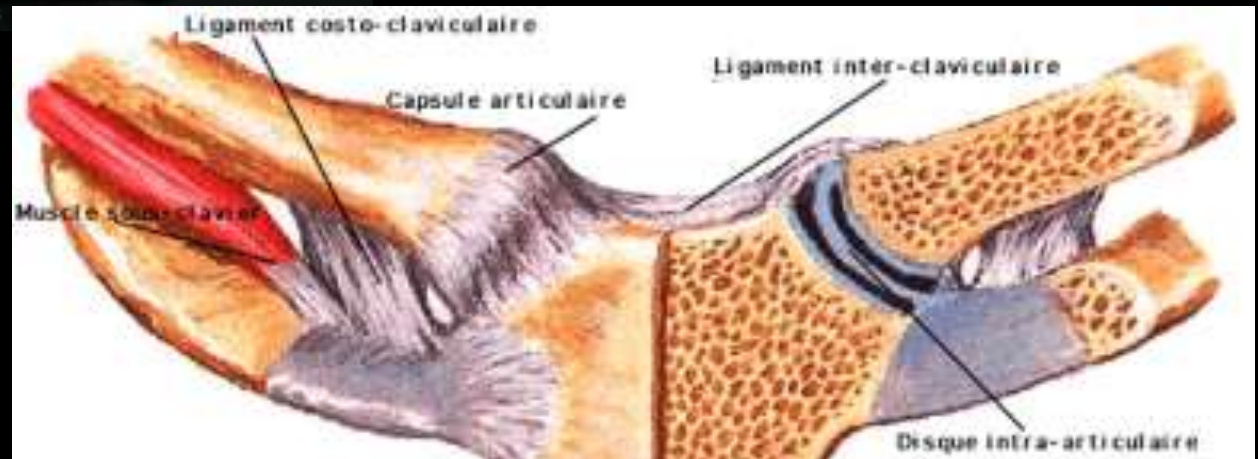
Articulations stérno et acromio – claviculaires



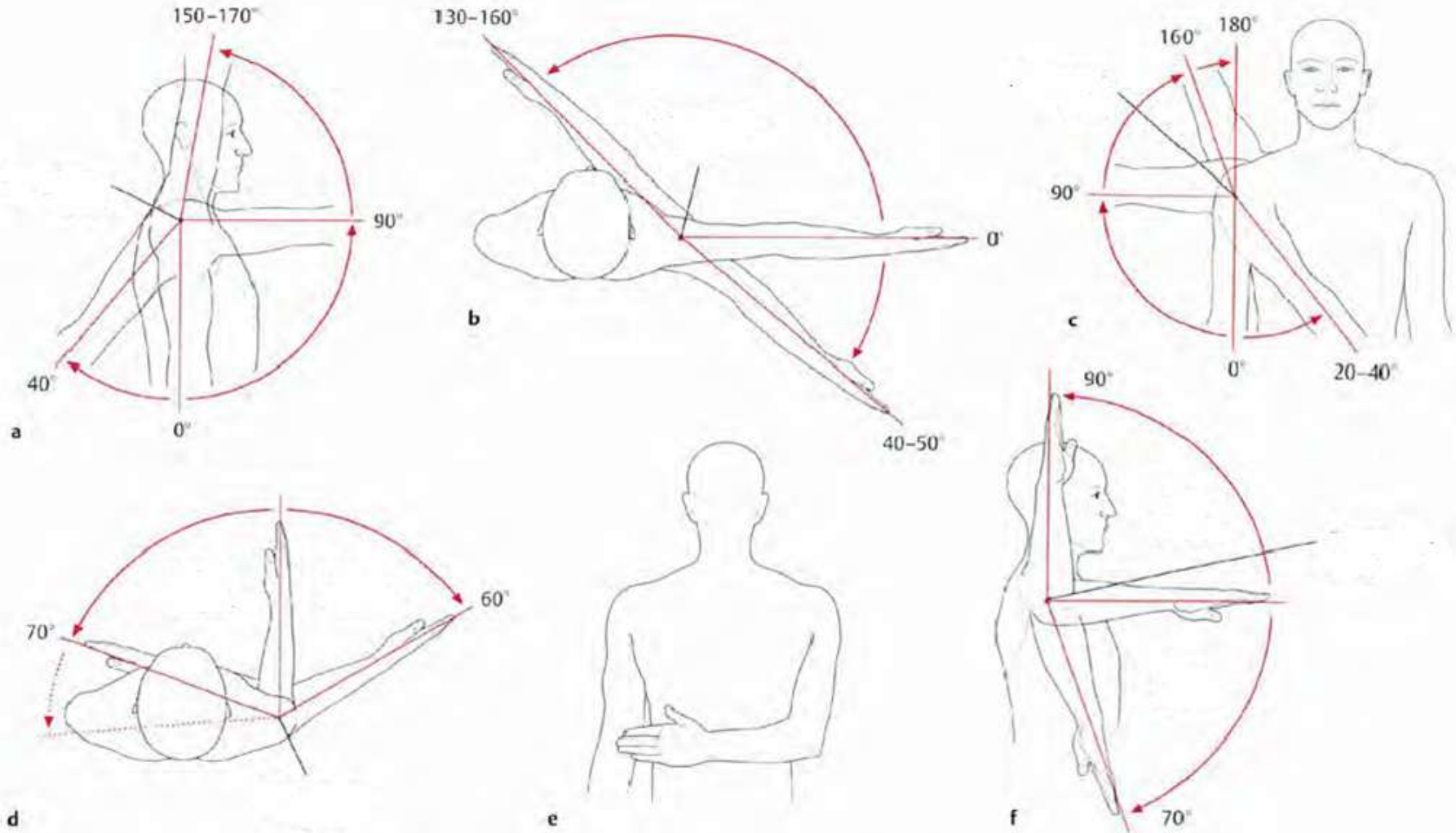
Articulation acromio – clavulaire

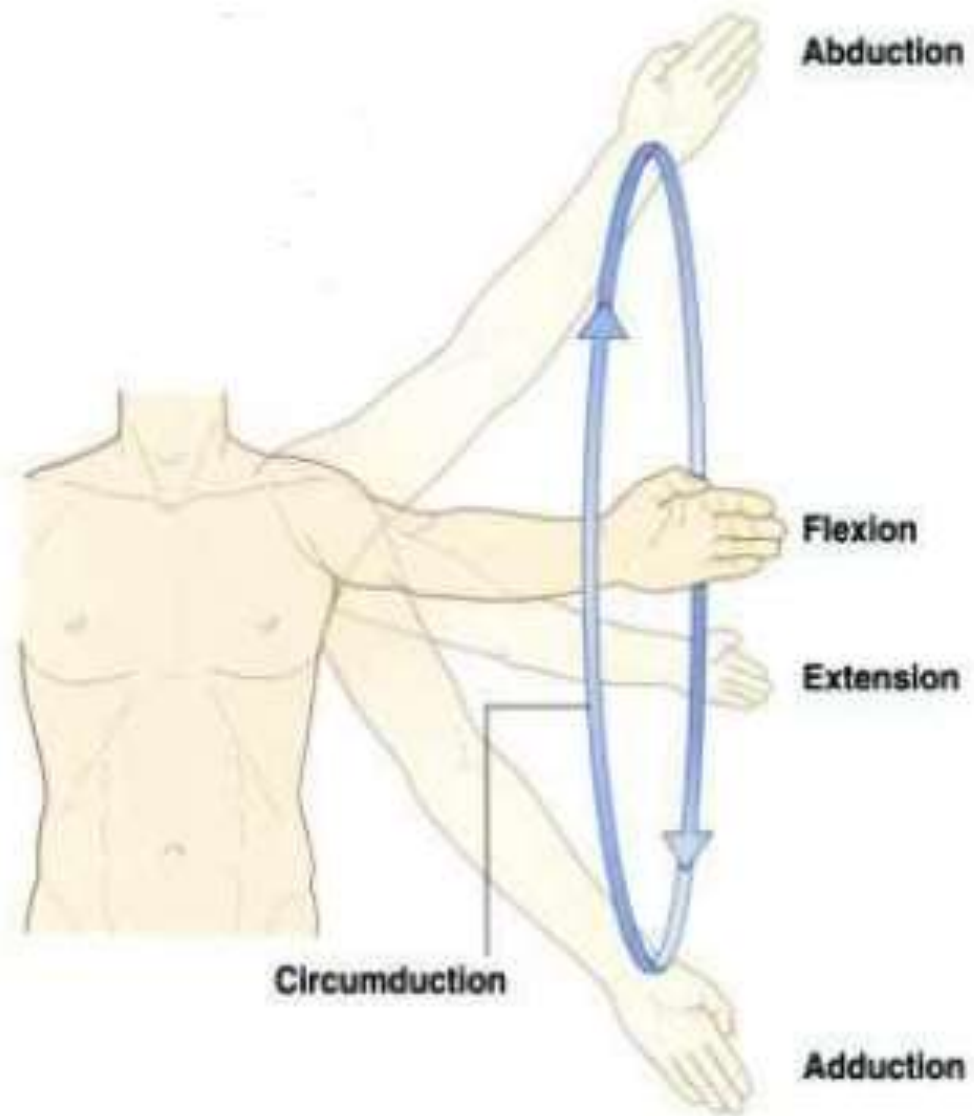


Articulation stérno – costo – clavulaire



Mobilité de l'épaule

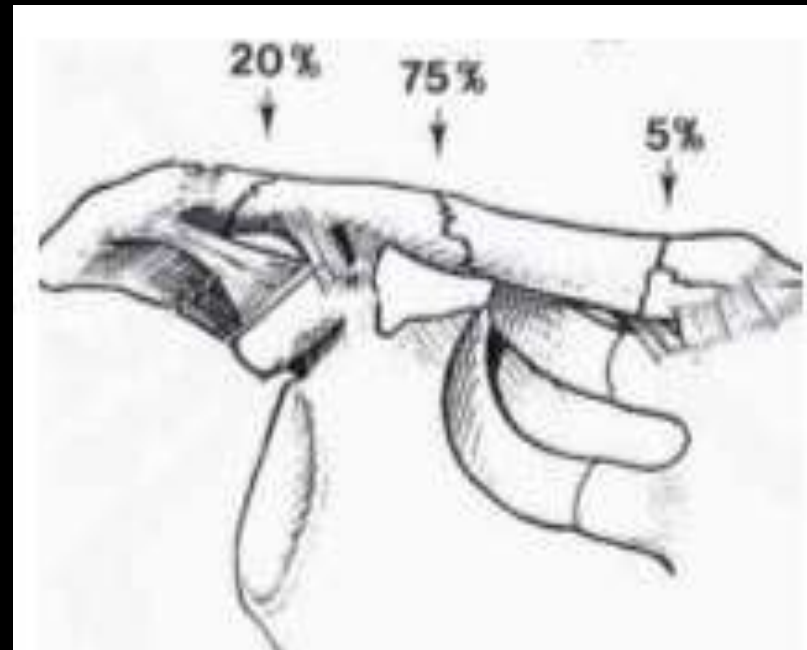
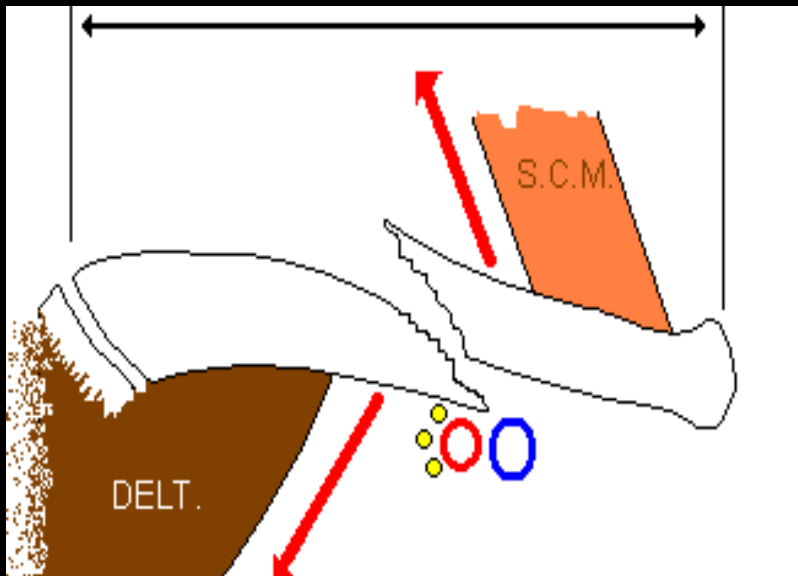




Épaule Clavicule

Notes cliniques

Fracture de la clavicule

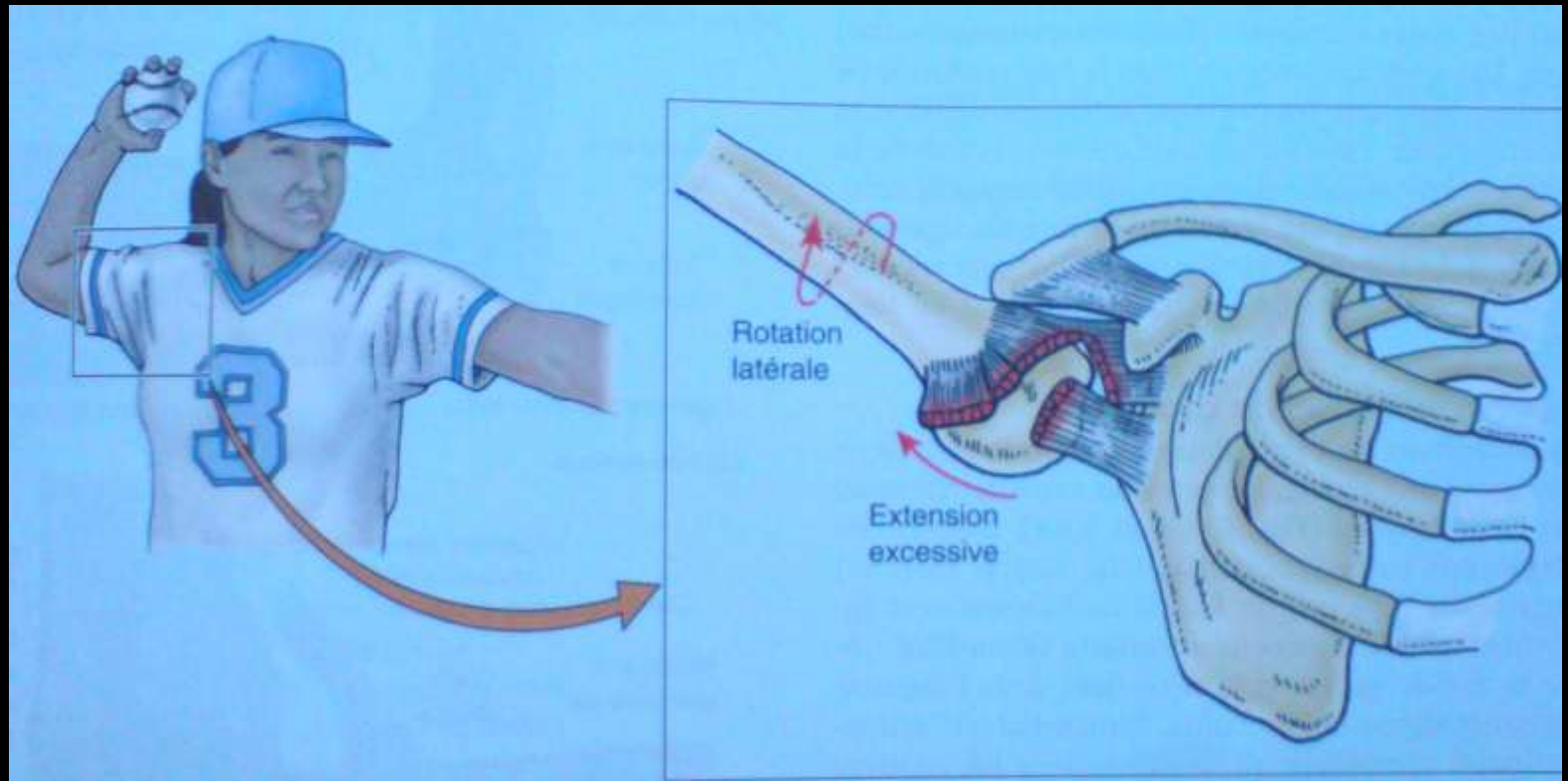


Fracture diaphyse humérale

Atteinte nerf radial



Luxation de l'articulation scapulo - humérale



Épaulle : Clavicule

Disjonction acromio-claviculaire

